

HI-VOR Z or TACAN RWY 18

VORTAC LNK 116.1 Chan 108	APCH CRS 185°	Rwy Idg 12,901 TDZE 1195 Arprt Elev 1219
---	-------------------------	---

[USAF]

LINCOLN (KLNK)

DME, RADAR required.

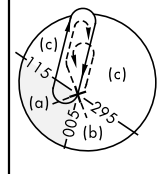
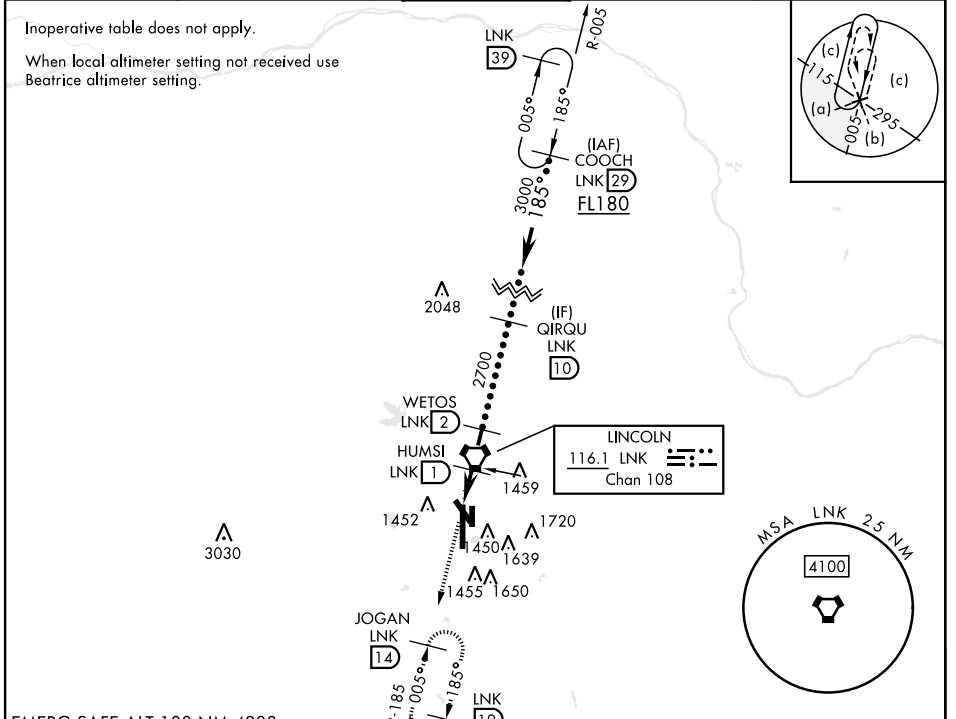


MISSED APPROACH: Climb to 3300 via LNK VORTAC R-185 to JOGAN 14 DME and hold.

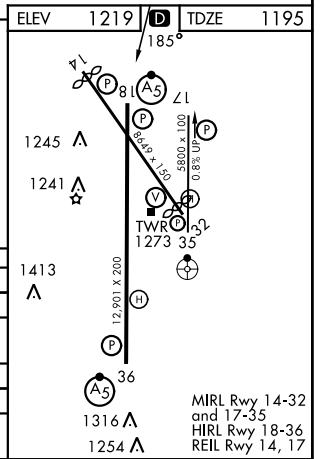
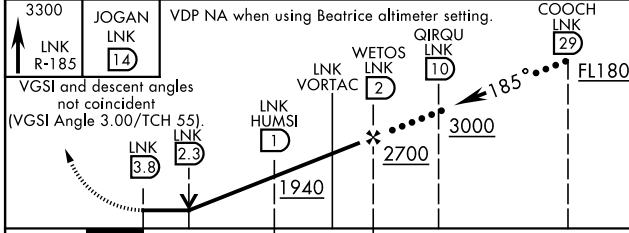
ATIS 118.05 290.9	OMAHA APP CON 124.0 270.3	TOWER★ 118.5 253.5	GND CON 121.9 275.8	CLNC DEL 120.7 225.4
-----------------------------	-------------------------------------	------------------------------	-------------------------------	--------------------------------

Inoperative table does not apply.

When local altimeter setting not received use Beatrice altimeter setting.



EMERG SAFE ALT 100 NM 4800



CATEGORY	C	D	E
S-18	1720-1½	525	(600-1½)
CIRCLING	1760-1½ 541 (600-1½)	1820-2 601 (700-2)	2040-3 821 (900-3)
BEATRICE ALTIMETER SETTING			
S-18	1820-1¾	625	(700-1¾)
CIRCLING	1860-1¾ 641 (700-1¾)	1920-2¼ 701 (800-2¼)	2140-3 921 (1000-3)

HI-VOR Z or TACAN RWY 18

NC-2, 16 APR 2026 to 14 MAY 2026

NC-2, 16 APR 2026 to 14 MAY 2026