


LOC I-OCZ <b>111.1</b>	APP CRS <b>177°</b>	Rwy Ldg <b>12901</b>
		TDZE <b>1195</b>
		Apt Elev <b>1219</b>

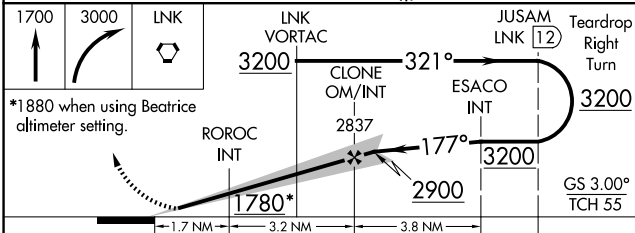
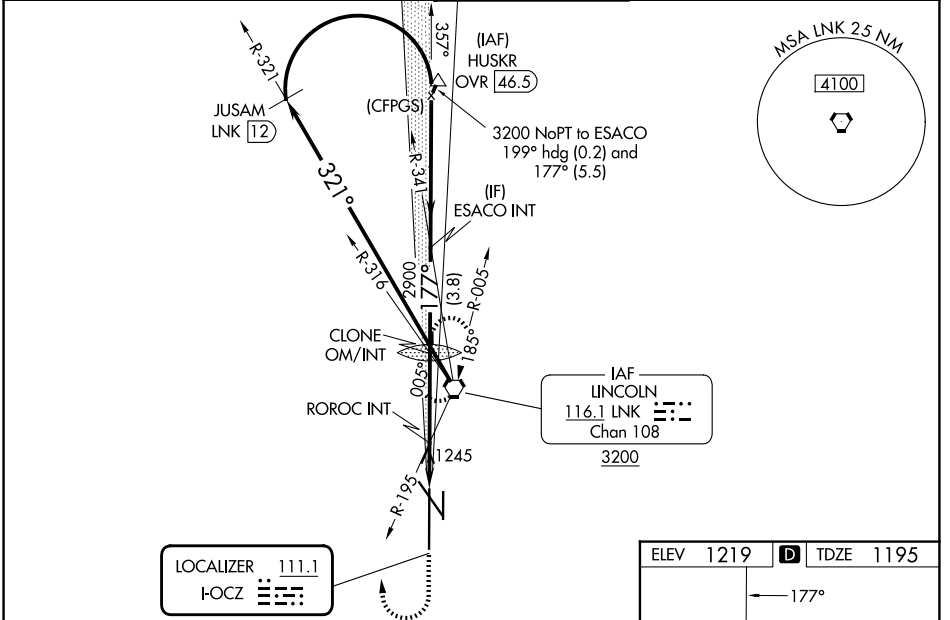
# ILS Y or LOC Y RWY 18

LINCOLN (LNK)

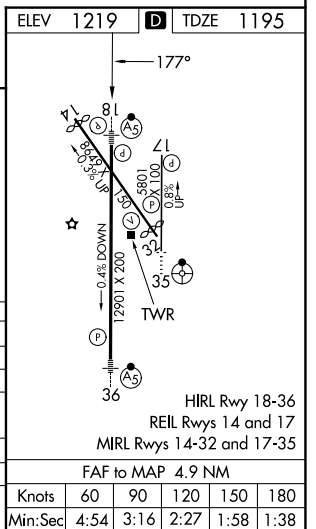
**⚠** When local altimeter setting not received use Beatrice altimeter setting and increase DA to 1486; and all MDA 100 feet, increase visibility S-LOC 18 Cat C, D, E and Circling Cats C and D 1/4 SM; increase ROROC fix minimums S-LOC 18 Cat C/D/E visibility 3/8 SM and Circling Cats C and D 1/4 SM. For inop ALS, increase S-ILS 18 Cat E visibility to RVR 4000, S-LOC 18 Cat E visibility to 1 3/4 SM, and ROROC fix minimums S-LOC 18 Cat E visibility to 1 1/2 SM. For inop ALS when using Beatrice altimeter setting, increase S-ILS 18 all Cats visibility to RVR 4500, S-LOC 18 Cat E visibility to 2 SM, and ROROC fix minimums S-LOC 18 Cat C/D/E visibility to 1 3/4 SM.  
#RVR 1800 authorized with use of FD or AP or HUD to DA.

**MALS**  
  
**MISSED APPROACH:**  
 Climb to 1700 then climbing right turn to 3000 direct LNK VORTAC and hold.

ATIS <b>118.05 290.9</b>	OMAHA APP CON <b>124.0 270.3</b>	LINCOLN TOWER* <b>118.5(CTAF) 253.5</b>	GND CON <b>121.9 275.8</b>	UNICOM <b>122.95</b>
-----------------------------	-------------------------------------	--	-------------------------------	-------------------------



CATEGORY	A	B	C	D	E
S-ILS 18#	1395/24 200 (200-1/2)				
S-LOC 18	1780/24	585 (600-1/2)	1780-1 1/4		585 (600-1 1/4)
CIRCLING	1780-1	561 (600-1)	1820-1 3/4	1960-2 1/2	2040-3
			601 (700-1 3/4)	741 (800-2 1/2)	821 (900-3)
ROROC FIX MINIMUMS (DUAL VOR RECEIVERS REQUIRED)					
S-LOC 18	1720/24	525 (600-1/2)	1720/55 525 (600-1)		
CIRCLING	1720-1	1760-1	1820-1 3/4	1960-2 1/2	2040-3
	501 (600-1)	541 (600-1)	601 (700-1 3/4)	741 (800-2 1/2)	821 (900-3)



NC-2, 16 APR 2026 to 14 MAY 2026

NC-2, 16 APR 2026 to 14 MAY 2026