

WAAS CH <b>50114</b> <b>W18A</b>	APP CRS <b>177°</b>	Rwy Ldg <b>12901</b> TDZE <b>1195</b> Apt Elev <b>1219</b>
--	------------------------	--

# RNAV (GPS) RWY 18

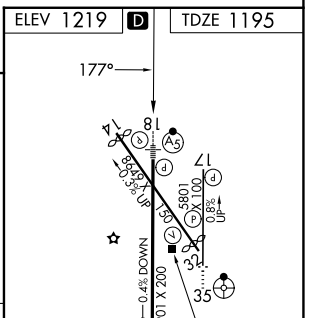
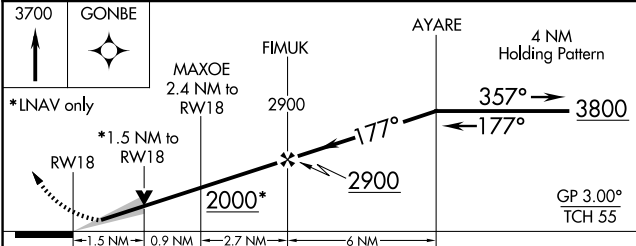
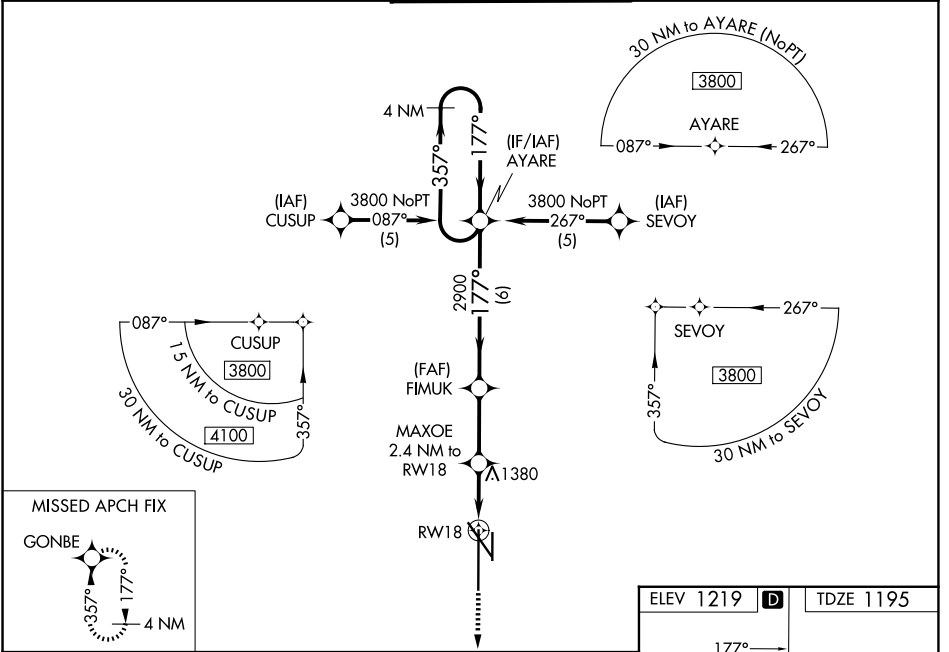
LINCOLN (LNK)

**⚠** For uncompensated Baro-VNAV systems, LNAV/VNAV NA below -17°C (2°F) or above 54°C (130°F). DME/DME RNP-0.3 NA. When local altimeter setting not received, use Beatrice altimeter setting and increase all DA 91 feet, all MDA 100 feet, increase LPV all Cats, LNAV Cats C and D, and Circling Cats C and D visibilities ¼ mile, and increase LNAV/VNAV all Cats visibility ½ mile. For inop MALS/R, when using Beatrice altimeter setting increase LPV all Cats visibility to 1¼ mile. Baro-VNAV and VDP NA when using Beatrice altimeter setting.

**MALS**

**MISSED APPROACH:**  
Climb to 3700 direct GONBE and hold.

ATIS <b>118.05 290.9</b>	OMAHA APP CON <b>124.0 270.3</b>	LINCOLN TOWER* <b>118.5(CTAF) 253.5</b>	GND CON <b>121.9 275.8</b>	UNICOM <b>122.95</b>
-----------------------------	-------------------------------------	--	-------------------------------	-------------------------



CATEGORY	A	B	C	D
LPV DA		1445/24	250 (300-½)	
LNAV/VNAV DA		1720/60	525 (600-1¼)	
LNAV MDA	1720/24	525 (600-½)	1720/50 525 (600-1)	1720/60 525 (600-1¼)
CIRCLING	1720-1 501 (600-1)	1760-1 541 (600-1)	1820-1¾ 601 (700-1¾)	1960-2½ 741 (800-2½)

HIRL Rwy 18-36  
REIL Rwy 14 and 17  
MIRL Rwy 14-32 and 17-35

NC-2, 16 APR 2026 to 14 MAY 2026

NC-2, 16 APR 2026 to 14 MAY 2026