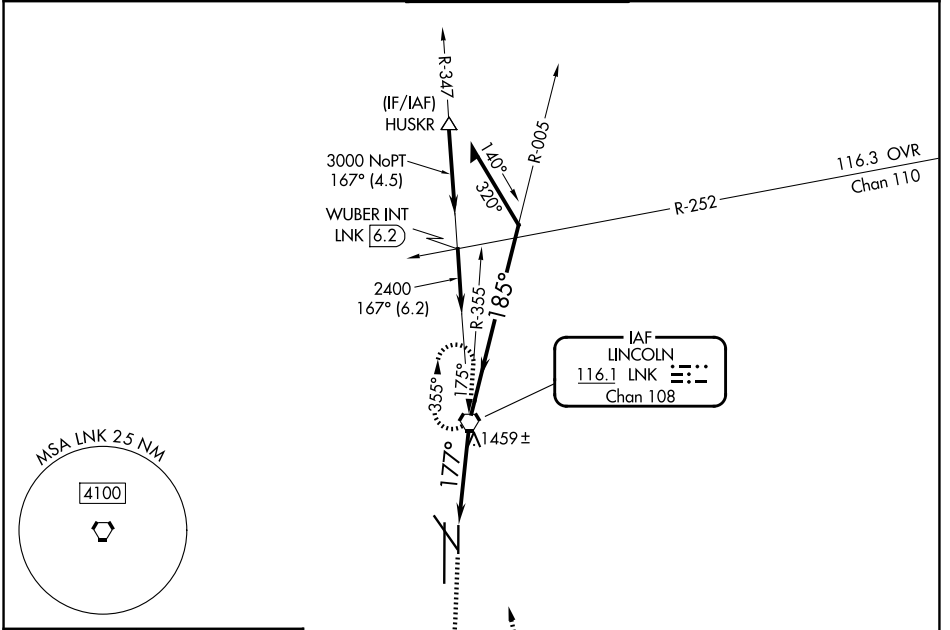


VORTAC LNK <b>116.1</b> Chan <b>108</b>	APP CRS <b>177°</b>	Rwy Ldg <b>5400</b> TDZE <b>1219</b> Apt Elev <b>1219</b>
---	------------------------	---

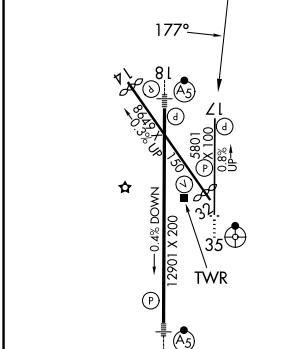
# VOR RWY 17

LINCOLN (LNK)

<p><b>⚠</b> When local altimeter setting not received, use Beatrice altimeter setting and increase all MDA 100 feet; increase S-17 Cat C/D visibility <math>\frac{3}{8}</math> SM and Circling Cat C/D visibility <math>\frac{1}{4}</math> SM. VDP NA when using Beatrice altimeter setting.</p>		<p>MISSED APPROACH: Climb to 2800 then climbing left turn to 3100 direct LNK VORTAC and hold</p>	
ATIS <b>118.05 290.9</b>	OMAHA APP CON <b>124.0 270.3</b>	LINCOLN TOWER* <b>118.5(CTAF) 253.5</b>	GND CON <b>121.9 275.8</b>
			UNICOM <b>122.95</b>



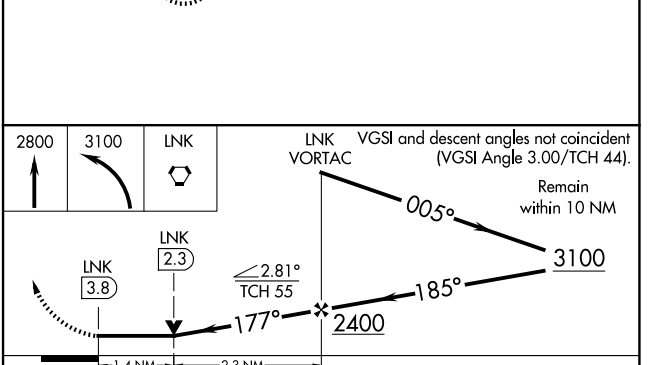
ELEV 1219	<b>D</b>	TDZE 1219
-----------	----------	-----------



HIRL Rwy 18-36  
REIL Rws 14 and 17  
MIRL Rws 14-32 and 17-35

FAF to MAP 3.8 NM

Knots	60	90	120	150	180
Min:Sec	3:48	2:32	1:54	1:31	1:16



CATEGORY	A	B	C	D
S-17	1720-1	501 (600-1)	1720-1 $\frac{3}{8}$	501 (600-1 $\frac{3}{8}$ )
CIRCLING	1720-1 501 (600-1)	1760-1 541 (600-1)	1820-1 $\frac{3}{4}$ 601 (700-1 $\frac{3}{4}$ )	1960-2 $\frac{1}{2}$ 741 (800-2 $\frac{1}{2}$ )

NC-2, 16 APR 2026 to 14 MAY 2026

NC-2, 16 APR 2026 to 14 MAY 2026