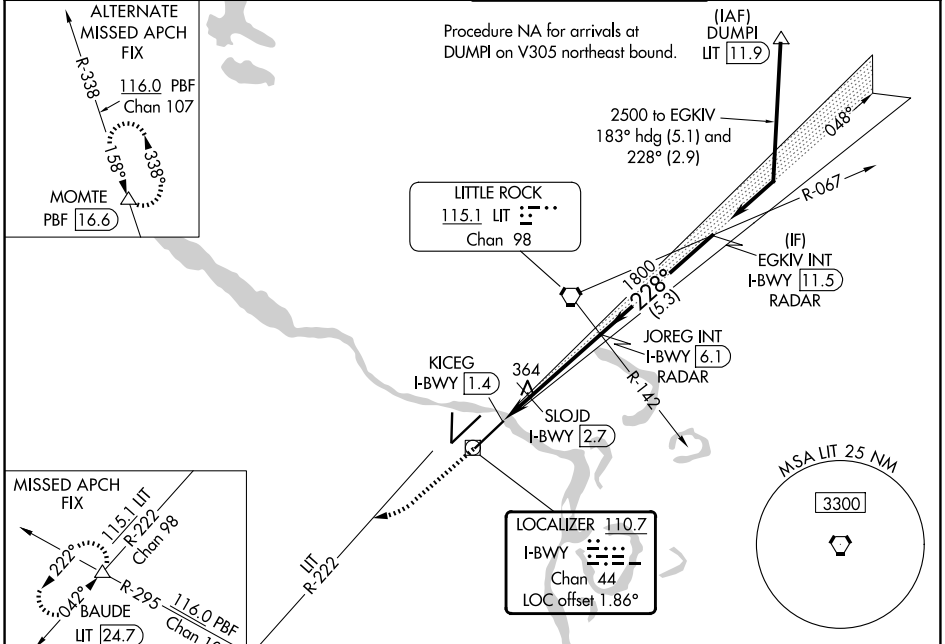


| | | | |
|---|------------------------|---|------------------------|
| LOC/DME I-BWY 110.7 Chan 44 | APP CRS 228° | Rwy Ldg TDZE 7200 260 | Apt Elev 266 |
|---|------------------------|---|------------------------|

ILS or LOC RWY 22L

BILL AND HILLARY CLINTON NTL/ADAMS FLD (LIT)

| | | | |
|--|---|-----------------------------------|--|
| DME or RADAR required. | | MALSF | MISSED APPROACH: Climb to 800 then climbing right turn to 3000 on LIT VORTAC R-222 to BAUDE INT/LIT 24.7 DME and hold. |
| <p>Simultaneous approach authorized. Inop table does not apply to S-ILS 22 all Cats. For inop ALS, increase S-LOC 22L Cats C/D visibility to 1/2 SM.</p> | | | |
| D-ATIS 125.65 | LITTLE ROCK APP CON 135.4 353.6 | ADAMS TOWER 118.7 257.8 | GND CON 121.9 339.8 |



| | | | | | | | | | | |
|---|---|----------------------|-----------------------|---------------|--------------------------------|--|----------------------------|--|--|--|
| ELEV 266 | D | TDZE 260 | 800 | 3000 | BAUDE | VGSI and ILS glidepath not coincident (VGSI Angle 3.00°/TCH 50). | | | | |
| Use I-BWY DME when on the localizer course. | | | | | | JOREG INT I-BWY 6.1 RADAR | EGKIV INT I-BWY 11.5 RADAR | | | |
| | | | | | | GS 3.00° TCH 47 | | | | |
| CATEGORY | | A | B | C | D | | | | | |
| S-ILS 22L | | 510/40 | | 250 (300-3/4) | | | | | | |
| S-LOC 22L | | 720/40 | 460 (500-3/4) | | 720/55 | 460 (500-1) | | | | |
| CIRCLING | | 820-1 554 (600-1) | 1000-1 734 (800-1) | | 1180-2 3/4 914 (1000-2 3/4) | 1180-3 914 (1000-3) | | | | |
| SLOJD FIX MINIMUMS (DME REQUIRED) | | | | | | | | | | |
| S-LOC 22L | | 620/40 | | 360 (400-3/4) | | | | | | |
| CIRCLING | | 820-1 554 (600-1) | 1000-1 734 (800-1) | | 1180-2 3/4 914 (1000-2 3/4) | 1180-3 914 (1000-3) | | | | |

SC-1, 16 APR 2026 to 14 MAY 2026

SC-1, 16 APR 2026 to 14 MAY 2026