

LOC/DME I-AAAY 110.3 Chan 40	APP CRS 227°	Rwy Ldg 8273 TDZE 262 Apt Elev 266
--	------------------------	---

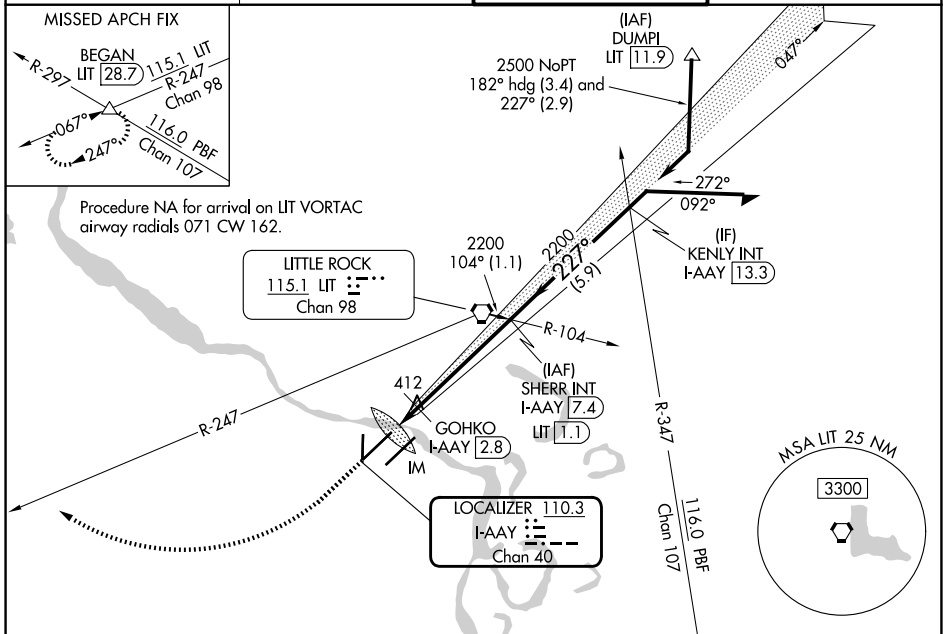
ILS or LOC RWY 22R

BILL AND HILLARY CLINTON NTL/ADAMS FLD (LIT)

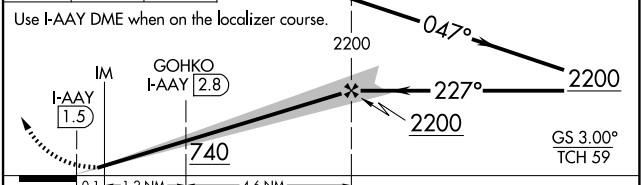
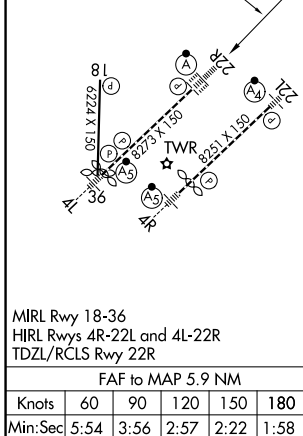
ALSIF-2
MISSED APPROACH: Climb to 1000 then climbing right turn to 3000 on LIT VORTAC R-247 to BEGAN INT/LIT 28.7 DME and hold.

Simultaneous approach authorized. For inop ALS, increase S-LOC 22R Cat C/D visibility to 1 $\frac{1}{2}$ SM; increase GOHKO Fix Minimums (DME required) S-LOC 22R Cat C/D visibility to RVR 6000.

D-ATIS 125.65	LITTLE ROCK APP CON 135.4 353.6	ADAMS TOWER 118.7 257.8	GND CON 121.9 339.8
-------------------------	---	-----------------------------------	-------------------------------



ELEV 266	D TDZE 262	1000	3000	BEGAN	SHERR INT I-AAAY [7.4] LIT [1.1]	Remain within 10 NM
----------	-------------------	------	------	-------	----------------------------------	---------------------



Use I-AAAY DME when on the localizer course.	IM	GOHKO I-AAAY [2.8]	2200	047°	2200	GS 3.00° TCH 59
0.1	1.2 NM	4.6 NM				
CATEGORY	A	B	C	D		
S-ILS 22R	462/18		200 (200- $\frac{1}{2}$)			
S-LOC 22R	740/24	478 (500- $\frac{1}{2}$)	740/50	478 (500-1)		
CIRCLING	820-1 554 (600-1)	1000-1 734 (800-1)	1180-2 $\frac{3}{4}$ 914 (1000-2 $\frac{3}{4}$)	1180-3 914 (1000-3)		
GOHKO FIX MINIMUMS (DME REQUIRED)						
S-LOC 22R	680/24	418 (500- $\frac{1}{2}$)	680/40	418 (500- $\frac{3}{4}$)		
CIRCLING	820-1 554 (600-1)	1000-1 734 (800-1)	1180-2 $\frac{3}{4}$ 914 (1000-2 $\frac{3}{4}$)	1180-3 914 (1000-3)		

MIRL Rwy 18-36
HIRL Rws 4R-22L and 4L-22R
TDZL/RCLS Rwy 22R

FAF to MAP 5.9 NM

Knots	60	90	120	150	180
Min:Sec	5:54	3:56	2:57	2:22	1:58