

WAAS CH 42811 W22A	APP CRS 227°	Rwy Ldg TDZE Apt Elev	7200 260 266
----------------------------------------	------------------------	-----------------------------	-----------------------------------------

RNAV (GPS) RWY 22L

BILL AND HILLARY CLINTON NTL/ADAMS FLD (LIT)

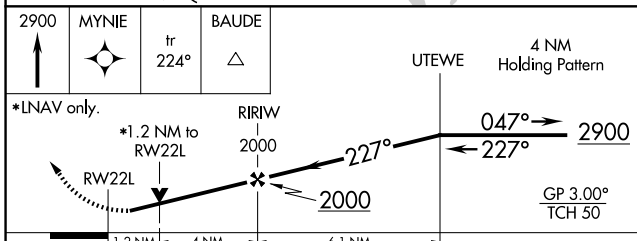
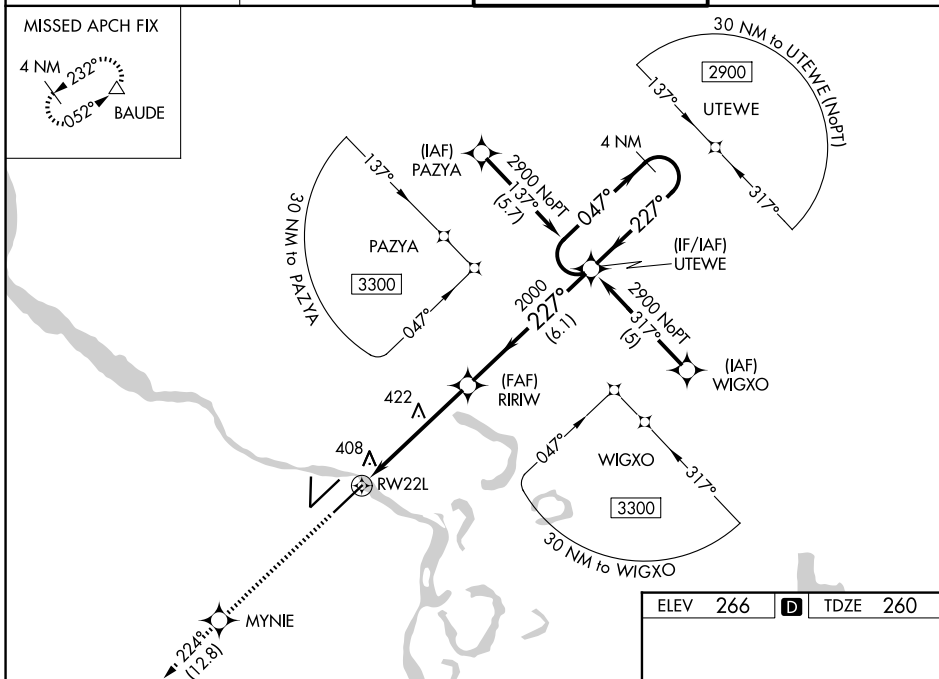
RNP APCH.

For uncompensated Baro-VNAV systems, LNAV/VNAV NA below -15°C or above 48°C.
 ▼ Rwy 22L helicopter visibility reduction below 3/4 SM NA. Inop table does not apply to LPV,
 ▲ LNAV/VNAV or LNAV Cat C and D. For inop ALS, increase LNAV Cat A and B visibility to RVR 5000. Simultaneous approach authorized. LNAV procedure NA during simultaneous operations. Use of FD or AP required during simultaneous operations.



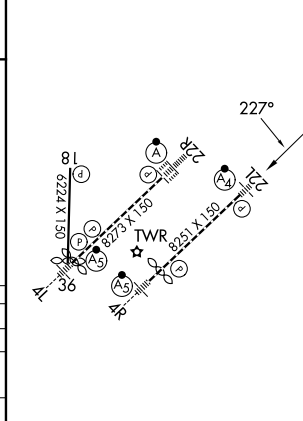
MISSED APPROACH:
 Climb to 2900 direct MYNIE and on track 224° to BAUDE and hold.

D-ATIS 125.65	LITTLE ROCK APP CON 135.4 353.6	ADAMS TOWER 118.7 257.8	GND CON 121.9 339.8
-------------------------	-------------------------------------------	-----------------------------------	-------------------------------



ELEV 266	D	TDZE 260
----------	----------	----------

CATEGORY	A	B	C	D
LPV DA		543/50	283 (300-1)	
LNAV/VNAV DA		774-1 3/4	514 (600-1 3/4)	
LNAV MDA	680/40	420 (500-3/4)	680/60	420 (500-1/4)
CIRCLING	820-1 554 (600-1)	1000-1 734 (800-1)	1180-2 3/4 914 (1000-2 3/4)	1180-3 914 (1000-3)



MIRL Rwy 18-36
 HIRL Rwys 4R-22L and 4L-22R
 TDZL/RCLS Rwy 22R

RNAV (GPS) RWY 22L

SC-1, 16 APR 2026 to 14 MAY 2026

SC-1, 16 APR 2026 to 14 MAY 2026