

LOC/DME I-LNR	APP CRS	Rwy Ldg	5000
108.35	270°	TDZE	717
Chan 20(Y)		Apt Elev	717

LOC RWY 27

TRI-COUNTY RGNL (LNR)

DME required. RADAR required for procedure entry.

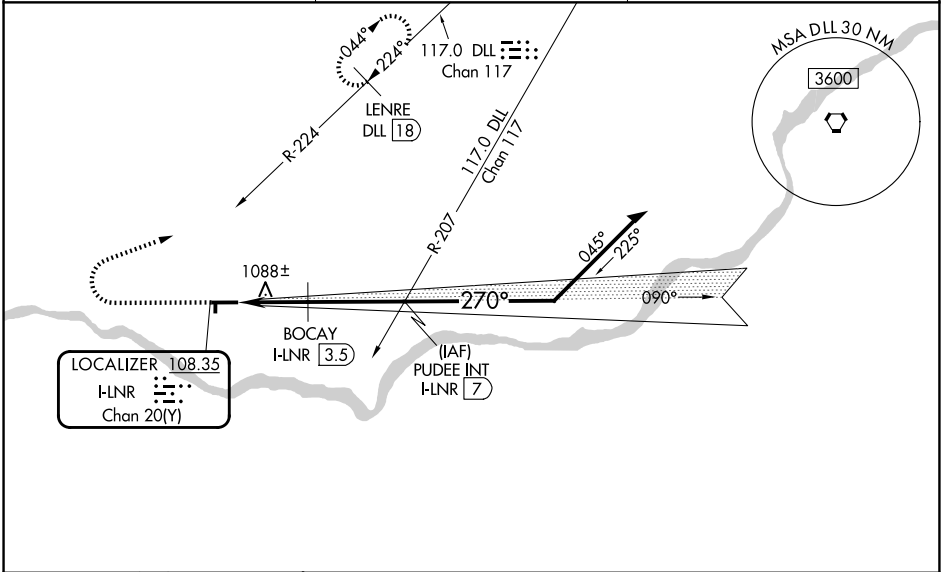
NA
 31°C
 Circling Rwy 18, 36 NA at night. Rwy 27 helicopter visibility reduction below 3/4 SM NA. If local altimeter setting not received, use Dane County Rgnl-Truax Fld altimeter setting and increase all MDA 120 feet. Increase S-27 visibility Cat A/B 1/4 SM, Cat C 1/2 SM, Circling visibility Cat B 1/4 SM, Cat C 1/2 SM. Increase BOCAV fix minimums S-27 visibility Cat C 1/4 SM, Circling Cat A/B 1/4 SM, Cat C 1/2 SM.

MISSED APPROACH:
 Climb to 2200 then climbing right turn to 3300 on heading 070° and on DLL R-224 to LENRE/DLL VORTAC 18 DME and hold.

ASOS
119.425

MADISON APP CON ★
135.45 343.7

UNICOM
123.0 (CTAF) 0



EC-3, 16 APR 2026 to 14 MAY 2026

EC-3, 16 APR 2026 to 14 MAY 2026

ELEV 717	TDZE 717	2200	3300	DLL R-224	LENRE DLL 18	PUDEE INT I-LNR 7	6000	090°	2700	2700
VGSIs and descent angles not coincident (VGSi Angle 4.00/TCH 35). Remain within 10 NM										
CATEGORY		A	B	C	D					
S-LOC 27		1580-1 863 (900-1)	1580-1¼ 863 (900-1¼)	1580-2½ 863 (900-2½)	NA					
CIRCLING		1580-1¼	863 (900-1¼)	1580-2½ 863 (900-2½)	NA					
BOCAV FIX MINIMUMS										
S-LOC 27		1360-1	643 (700-1)	1360-1¾ 643 (700-1¾)	NA					
CIRCLING		1520-1	803 (900-1)	1560-2½ 843 (900-2½)	NA					

REIL Rwy 9 and 27 0
 MIRL Rwys 9-27 and 18-36 0
 FAF to MAP 6 NM

Knots	60	90	120	150	180
Min:Sec	6:00	4:00	3:00	2:24	2:00