

(DSN6E.DSN6E6) 03SEP24

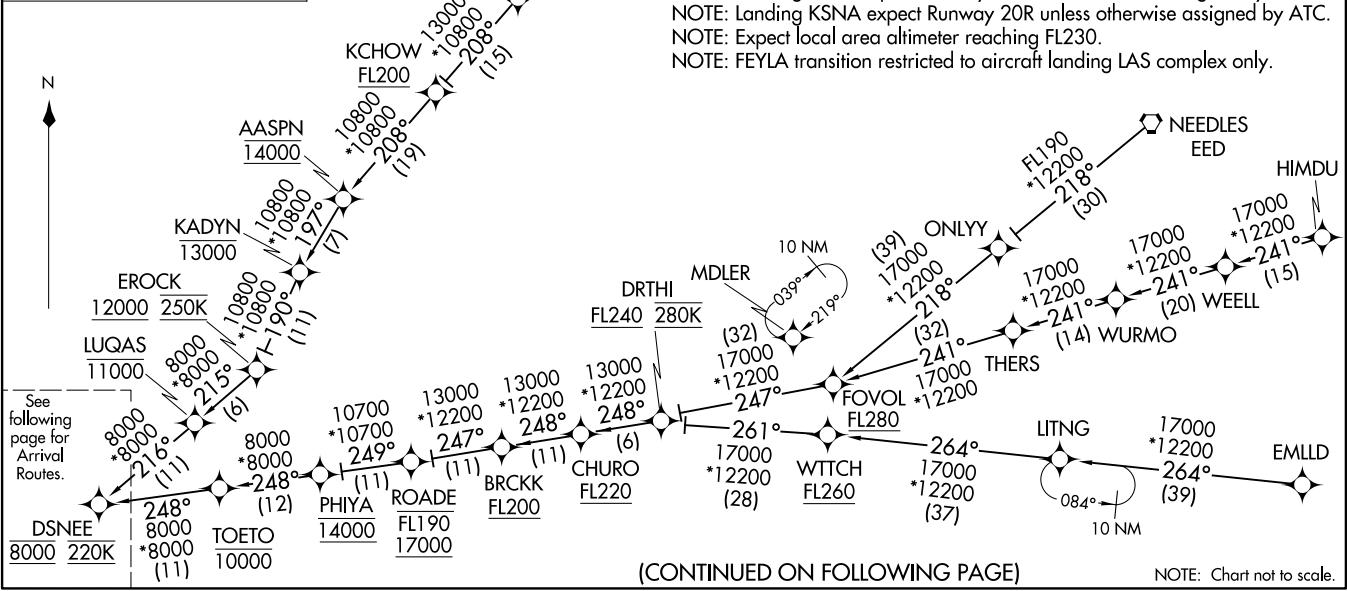
DSN6E SIX ARRIVAL (RNAV) Transition Routes

LONG BEACH, CALIFORNIA

- EMLD TRANSITION (EMLD.DSN6E6)
- FEYLA TRANSITION (FEYLA.DSN6E6)
- HIMDU TRANSITION (HIMDU.DSN6E6)
- LRSON TRANSITION (LRSON.DSN6E6)
- MARUE TRANSITION (MARUE.DSN6E6)
- NATEE TRANSITION (NATEE.DSN6E6)
- NEEDLES TRANSITION (EED.DSN6E6)

SOCAL APP CON
134.0 278.3
LGB ATIS
127.75
SNA D-ATIS
126.0

RNAV 1 - DME/DME/IRU or GPS.
RADAR required.



(CONTINUED ON FOLLOWING PAGE)

(DSN6E.DSN6E6) 24249

DSN6E SIX ARRIVAL (RNAV) Transition Routes

LONG BEACH, CALIFORNIA

- NOTE: Jet and turboprop aircraft only.
- NOTE: Procedure is only for use when SNA is landing south.
- NOTE: Landing KLGB expect Runway 30 unless otherwise assigned by ATC.
- NOTE: Landing KSNA expect Runway 20R unless otherwise assigned by ATC.
- NOTE: Expect local area altimeter reaching FL230.
- NOTE: FEYLA transition restricted to aircraft landing LAS complex only.

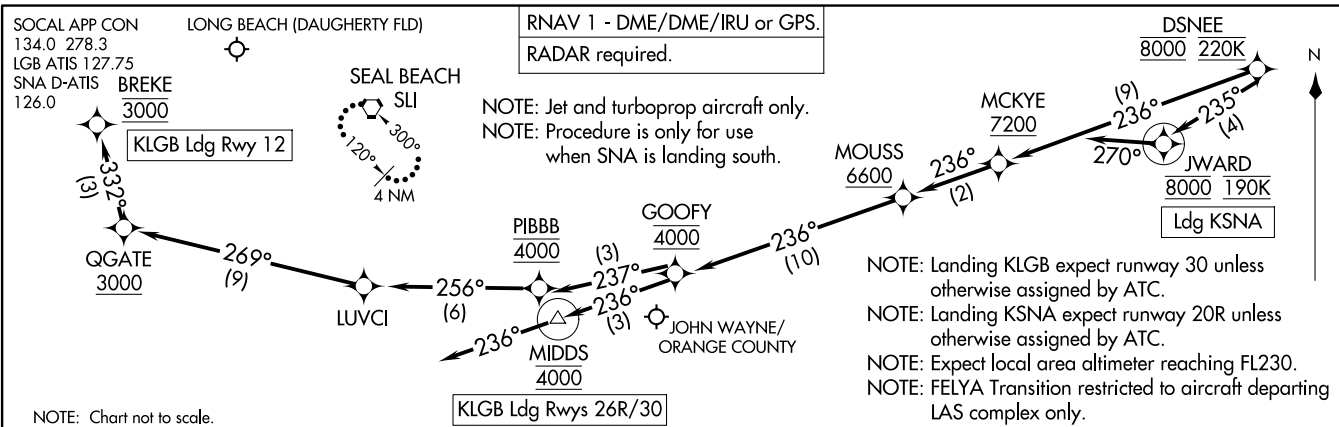
AL-236 (FAA)

NOTE: Chart not to scale.

(DSNNEE.DSNNEE6) 055EP24
 DSNNEE SIX ARRIVAL (RNAV) Arrival Routes

LONG BEACH, CALIFORNIA

LONG BEACH, CALIFORNIA



ARRIVAL ROUTE DESCRIPTION

LANDING KLGB RUNWAY 12: From DSNNEE on track 236° to cross MCKYE at or above 7200, then on track 236° to cross MOUSS at or above 6600, then on track 236° to cross GOOFY at 4000, then on track 237° to cross PIBBB at 4000, then on track 256° to LUVCI, then on track 269° to cross QGATE at or above 3000, then on track 332° to cross BREKE at 3000. Expect RNAV (RNP) RWY 12 approach.

LANDING KLGB RUNWAYS 26R, 30: From DSNNEE on track 236° to cross MCKYE at or above 7200, then on track 236° to cross MOUSS at or above 6600, then on track 236° to cross GOOFY at 4000, then on track 236° to cross MIDDS at 4000, then on track 236° Expect RADAR vectors for the ILS or RNAV RWY 26R, 30 approaches.

LANDING KSNA: From DSNNEE on track 235° to cross JWARD at 8000 and at 190K, then on heading 270°. Expect RADAR vectors for ILS or RNAV RWY 20R approach.

LOST COMMUNICATIONS:

LANDING LGB RUNWAYS 26R/30: After MIDDS proceed on the RNAV (RNP) Y RWY 30 or ILS or LOC RWY 30 approach.

LANDING LGB RUNWAY 12: After BREKE proceed on the RNAV (RNP) RWY 12 approach, if unable to conduct approach, after BREKE proceed to SLI VORTAC and hold.

LANDING SNA: After DSNNEE proceed on the RNAV (RNP) Z RWY 20R approach. If unable to conduct approach, after DSNNEE maintain 6000 proceed to SLI VORTAC and hold.

(DSNNEE.DSNNEE6) 24249
 DSNNEE SIX ARRIVAL (RNAV) Arrival Routes

LONG BEACH, CALIFORNIA

A1-236 (FAA)