

KAYOH EIGHT ARRIVAL

AL-236 (FAA)

LONG BEACH, CALIFORNIA

SW-3, 16 APR 2026 to 14 MAY 2026

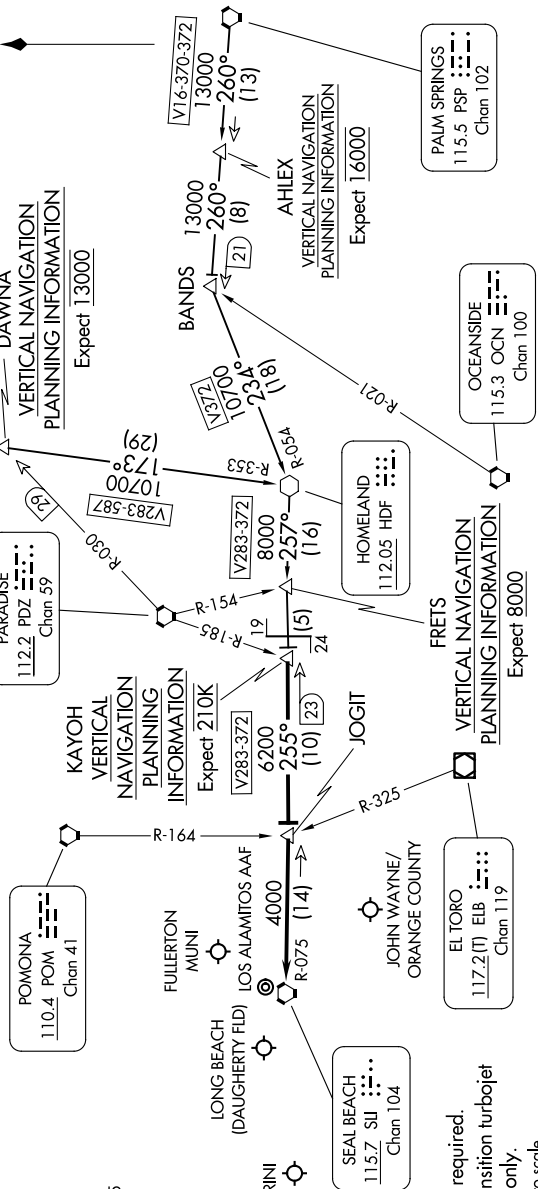
ARRIVAL ROUTE DESCRIPTION

HECTOR TRANSITION (HEC.KAYOH8): From over HEC VORTAC on HEC R-211 to BULGY then on R-211 and PDZ R-030 to DAWNA, then on HDF R-257 to BULGY, then on HDF R-257 to FRETS, then on HDF R-257 and SUJ R-075 to KAYOH. Thence. . . .

PALM SPRINGS TRANSITION (PSP.KAYOH8): From over PSP VORTAC on PSP R-260 to BANDS, then on HDF R-054 to HDF VOR, then on HDF R-257 to FRETS, then on HDF R-257 and SUJ R-075 to KAYOH. Thence. . . .

. . . . from over KAYOH on SUJ R-075 to JOGIT, then on SUJ R-075 to SUJ VORTAC, expect RADAR vectors to final approach course.

- SOCAL APP CON
 133.85 346.35
 FUL ATIS
 125.05
 LGB ATIS
 127.75
 KSJ ATIS
 118.875 379.975
 SNA D-ATIS
 126.0
 TOA ATIS
 125.6



NOTE: RADAR required.
 NOTE: HEC transition turbojet aircraft only.
 NOTE: Chart not to scale.

SW-3, 16 APR 2026 to 14 MAY 2026

KAYOH EIGHT ARRIVAL

LONG BEACH, CALIFORNIA