

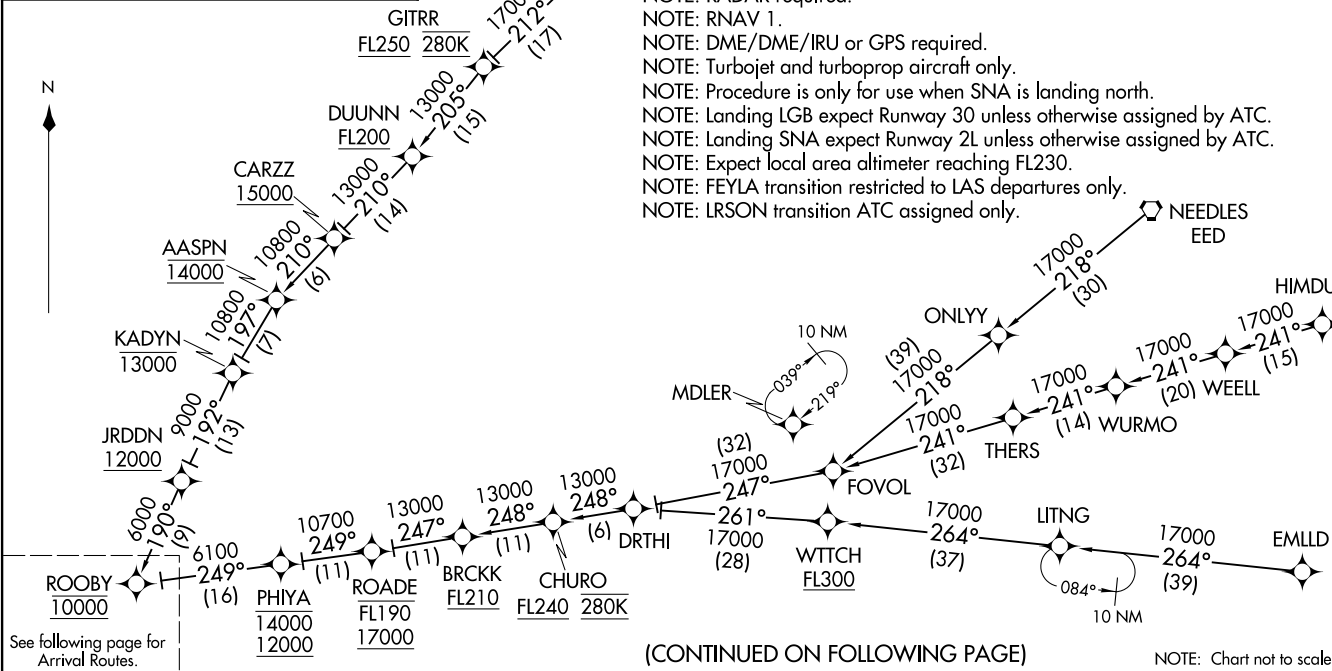
(ROOBY.ROOBY3) 01FEB18

ROOBY THREE ARRIVAL (RNAV) Transition Routes

LONG BEACH, CALIFORNIA

- EMLD TRANSITION (EMLD.ROOBY3)
- FEYLA TRANSITION (FEYLA.ROOBY3)
- HIMDU TRANSITION (HIMDU.ROOBY3)
- LRSON TRANSITION (LRSON.ROOBY3)
- MARUE TRANSITION (MARUE.ROOBY3)
- NATEE TRANSITION (NATEE.ROOBY3)
- NEEDLES TRANSITION (EED.ROOBY3)

SOCAL APP CON
134.0 278.3
LGB ATIS
127.75
SNA D-ATIS
126.0



- NOTE: RADAR required.
- NOTE: RNAV 1.
- NOTE: DME/DME/IRU or GPS required.
- NOTE: Turbojet and turboprop aircraft only.
- NOTE: Procedure is only for use when SNA is landing north.
- NOTE: Landing LGB expect Runway 30 unless otherwise assigned by ATC.
- NOTE: Landing SNA expect Runway 2L unless otherwise assigned by ATC.
- NOTE: Expect local area altimeter reaching FL230.
- NOTE: FEYLA transition restricted to LAS departures only.
- NOTE: LRSON transition ATC assigned only.

(CONTINUED ON FOLLOWING PAGE)

NOTE: Chart not to scale.

(ROOBY.ROOBY3) 21168

ROOBY THREE ARRIVAL (RNAV) Transition Routes

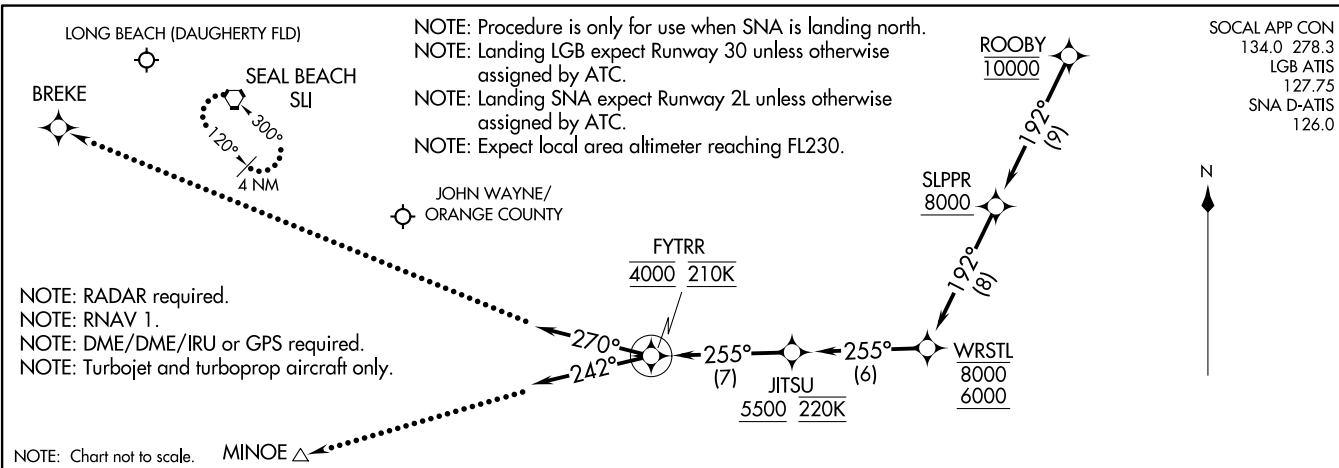
LONG BEACH, CALIFORNIA

AL-236 (FAA)

ROOBY THREE ARRIVAL (RNAV) (ROOBY, ROOBY3) 01 FEB 18

ROOBY THREE ARRIVAL (RNAV) Arrival Routes

LONG BEACH, CALIFORNIA



(ROOBY, ROOBY3) 21168

AL-236 (FAA)
 Arrival Routes

LONG BEACH, CALIFORNIA

SOCAL APP CON
 134.0 278.3
 LGB ATIS
 127.75
 SNA D-ATIS
 126.0