

APP CRS <b>121°</b>	Rwy Ldg <b>8650</b>
	TDZE <b>53</b>
	Apt Elev <b>60</b>

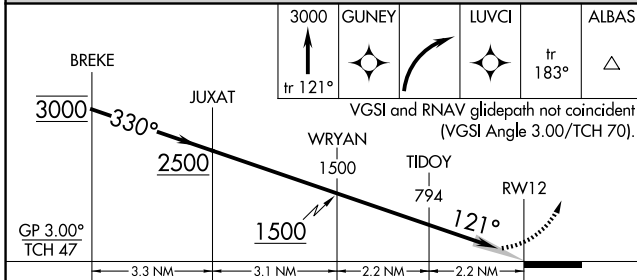
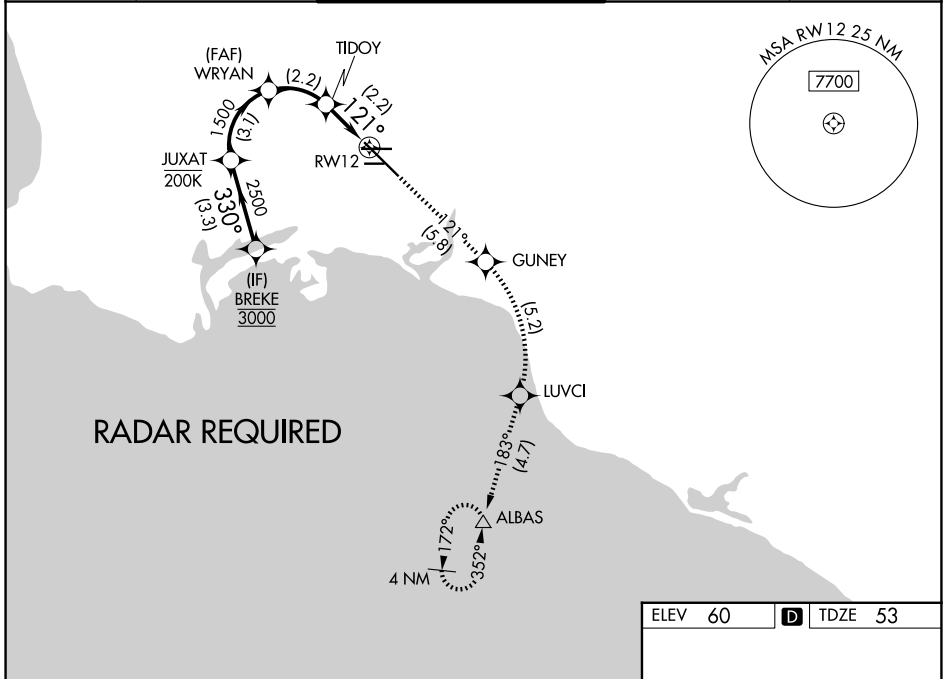
# RNAV (RNP) RWY 12

LONG BEACH (DAUGHERTY FLD) (LGB)

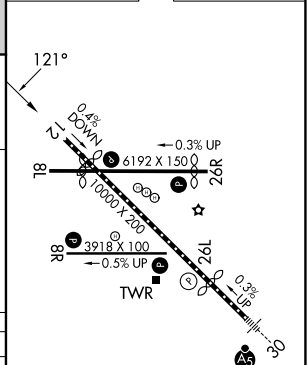
**⚠** For uncompensated Baro-VNAV systems, procedure NA below 4°C (40°F) or above 54°C (130°F). RF required. GPS required.

MISSED APPROACH: Climb to 3000 on track 121° to GUNEY, right turn to LUVCI, and on track 183° to ALBAS and hold.

ATIS <b>127.75</b>	SOCAL APP CON <b>125.35 316.125</b>	LONG BEACH TOWER ★ <b>120.5 257.6 (12)</b> <b>119.4 (CTAF) 0 257.6 (30)</b>	GND CON <b>133.0 257.6</b>	UNICOM <b>122.95</b>
-----------------------	--	---	-------------------------------	-------------------------



ELEV 60	<b>D</b> TDZE 53
---------	------------------



CATEGORY	A	B	C	D
RNP 0.15 DA		414-1¼	361 (400-1¼)	
RNP 0.30 DA		485-1½	432 (500-1½)	

**AUTHORIZATION REQUIRED**

TDZ/CL Rwy 30  
HIRL Rwy 12-30  
HIRL Rwy 8R-26L  
MIRL Rwy 8L-26R  
REIL Rwys 8R, 12, 26L, and 26R

SW-3, 16 APR 2026 to 14 MAY 2026

SW-3, 16 APR 2026 to 14 MAY 2026