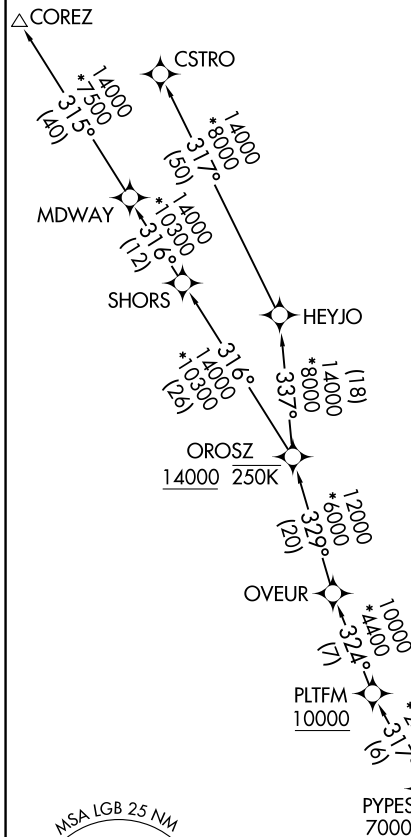


# TOPMM FIVE DEPARTURE (RNAV)

RNAV 1 - DME/DME/IRU or GPS.  
RADAR required.

**TOP ALTITUDE:**  
**15000**

SOCAL DEP CON  
125.35 316.125 (Rwy 12)  
134.9 360.7 (Rwys 26R, 30)  
ATIS  
127.75  
CLNC DEL  
118.15  
GND CON  
133.0 257.6



**DEPARTURE ROUTE DESCRIPTION**

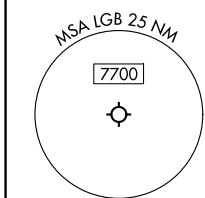
**TAKEOFF RUNWAY 12:** Climb on heading 121° to 560, then direct to cross OMMAA at 3000, then on track 196° to PLTAA, then on track 269° to AAYJY, then on track 350° to cross QMARY at 4000, then on track 312° to cross TOPMM at or above 2400 and at 200K, thence. . . .

**TAKEOFF RUNWAY 26R:** Climb on heading 256° to intercept course 302° to cross TOPMM at or above 2400 and at 200K, thence. . . .

**TAKEOFF RUNWAY 30:** Climb on heading 301° to intercept course 269° to cross TOPMM at or above 2400 and at 200K, thence. . . .

. . . . on (transition). Maintain 15000. Expect filed altitude 10 minutes after departure.

COREZ TRANSITION (TOPMM5.COREZ)  
CSTRO TRANSITION (TOPMM5.CSTRO)



NOTE: Turbojet aircraft only.

TAKEOFF MINIMUMS

Rwy 12: Standard.  
Rwy 26R: Standard with minimum climb of 255'/NM to 560.  
Rwy 30: Standard with minimum climb of 250'/NM to 560.

NOTE: Chart not to scale.

## TOPMM FIVE DEPARTURE (RNAV) (TOPMM5.TOPMM) 26DEC24

SW-3, 16 APR 2026 to 14 MAY 2026

SW-3, 16 APR 2026 to 14 MAY 2026