

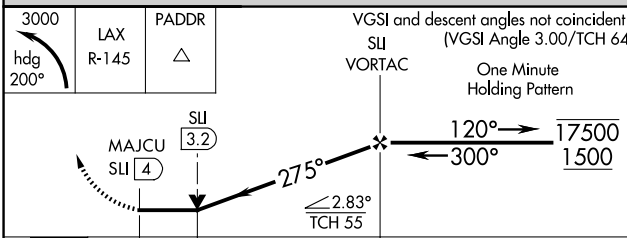
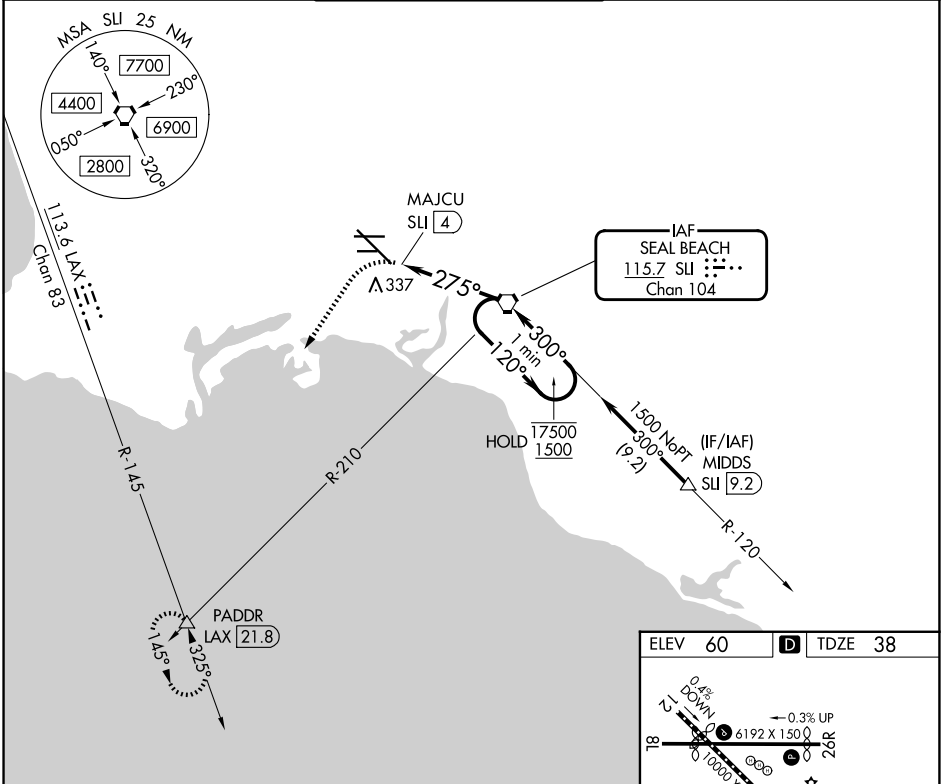
VORTAC SU 115.7 Chan 104	APP CRS 275°	Rwy Ldg TDZE 38 Apt Elev 60
--	------------------------	---

VOR or TACAN RWY 30

LONG BEACH (DAUGHERTY FLD) (L.G.B)

<p>Rwy 30 helicopter visibility reduction below RVR 4000 NA. Inop table does not apply.</p>		MISSED APPROACH: Climbing left turn to 3000 on heading 200° and LAX VORTAC R-145 to PADDR INT/LAX 21.8 DME and hold.

ATIS 127.75	SOCAL APP CON 125.35 316.125	LONG BEACH TOWER ★ 120.5 257.6 (12) 119.4 (CTAF) 257.6 (30)	GND CON 133.0 257.6	UNICOM 122.95
-----------------------	--	---	-------------------------------	-------------------------



ELEV 60	D	TDZE 38
TDZ/CL Rwy 30 HIRL Rwy 12-30 HIRL Rwy 8R-26L MIRL Rwy 8L-26R REIL Rws 8R, 12, 26L, and 26R FAF to MAP 4 NM		
Knots	60	90 120 150 180
Min:Seq	4:00	2:40 2:00 1:36 1:20

CATEGORY	A	B	C	D
S-30	600/55 562 (600-1)		600-1 5/8 562 (600-1 5/8)	
CIRCLING	840-1 780 (800-1)		840-2 1/4 780 (800-2 1/4)	840-2 1/2 780 (800-2 1/2)

SW-3, 16 APR 2026 to 14 MAY 2026

SW-3, 16 APR 2026 to 14 MAY 2026