

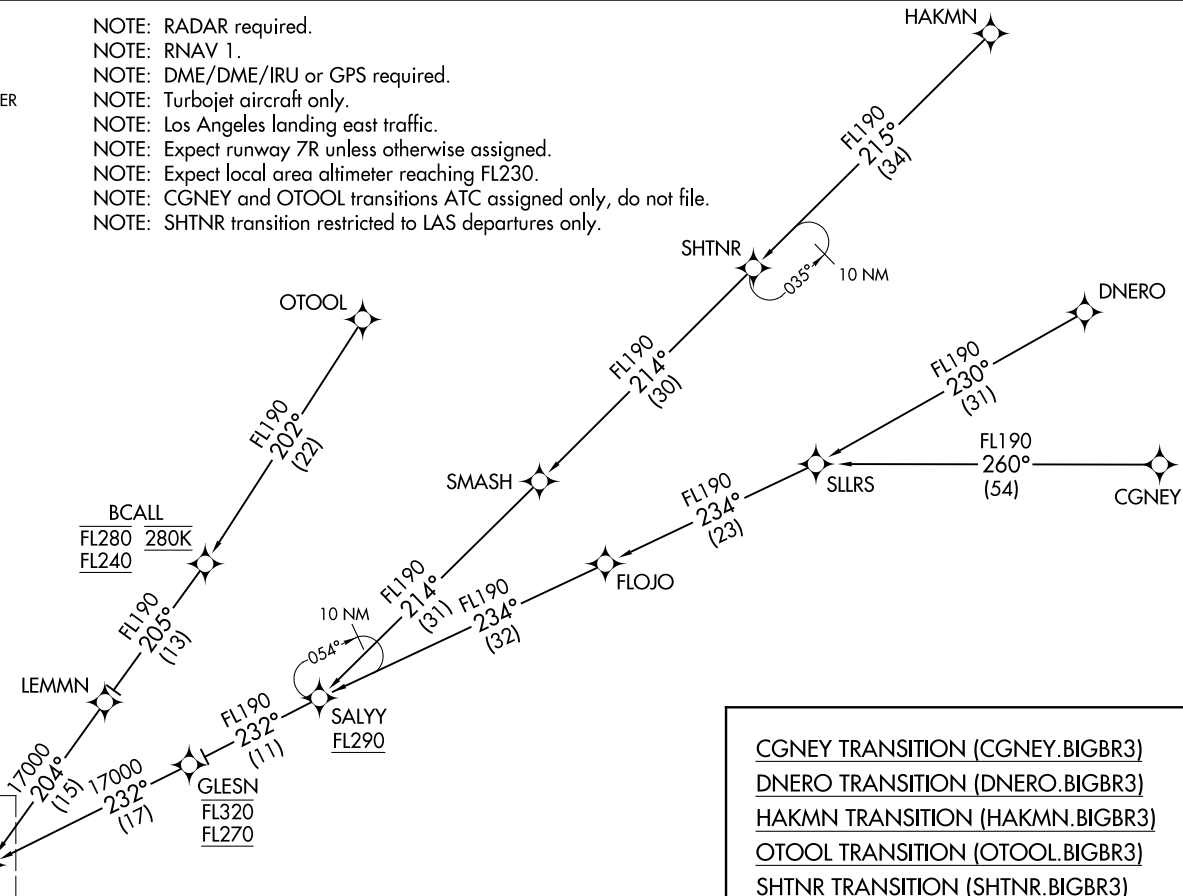
(ANJLL.BIGBR3) 24MAY18

BIGBR THREE ARRIVAL (RNAV) Transition Routes

LOS ANGELES, CALIFORNIA
LOS ANGELES INTL (LAX)

SOCAL APP CON
124.05 353.775
D-ATIS ARR
133.8
LOS ANGELES TOWER
(N) 133.9 239.3
(S) 120.95 379.1

- NOTE: RADAR required.
- NOTE: RNAV 1.
- NOTE: DME/DME/IRU or GPS required.
- NOTE: Turbojet aircraft only.
- NOTE: Los Angeles landing east traffic.
- NOTE: Expect runway 7R unless otherwise assigned.
- NOTE: Expect local area altimeter reaching FL230.
- NOTE: CGNEY and OTOOL transitions ATC assigned only, do not file.
- NOTE: SHTNR transition restricted to LAS departures only.



See following page
for Arrival Routes.

(CONTINUED ON FOLLOWING PAGE)

NOTE: Chart not to scale.

CGNEY TRANSITION (CGNEY.BIGBR3)
DNERO TRANSITION (DNERO.BIGBR3)
HAKMN TRANSITION (HAKMN.BIGBR3)
OTOOL TRANSITION (OTOOL.BIGBR3)
SHTNR TRANSITION (SHTNR.BIGBR3)

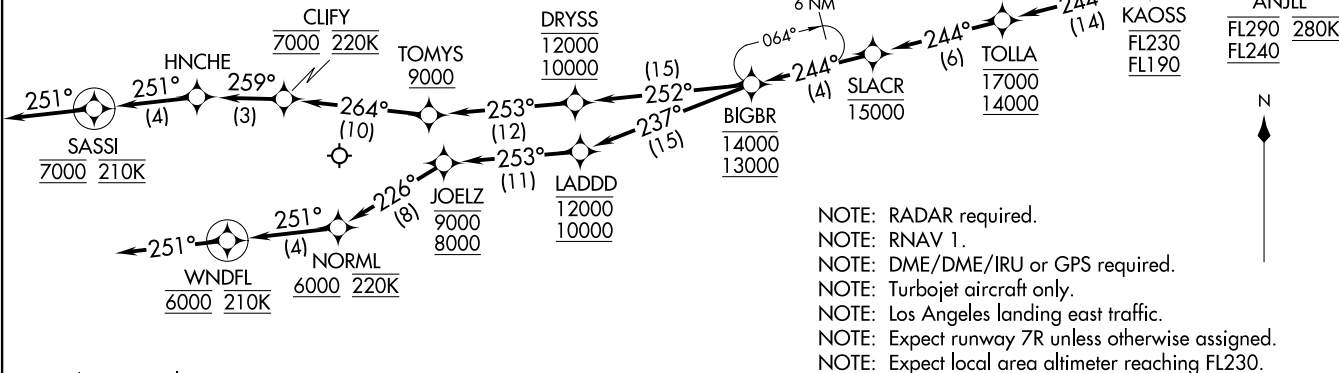
(ANJLL.BIGBR3) 181144

AL-237 (FAA)
BIGBR THREE ARRIVAL (RNAV) Transition Routes

LOS ANGELES INTL (LAX)
LOS ANGELES, CALIFORNIA

(ANJLL.BIGBR3) 24MAY18
BIGBR THREE ARRIVAL (RNAV) Arrival Routes

SOCAL APP CON
 124.05 353.775
 D-ATIS ARR
 133.8
 LOS ANGELES TOWER
 (N) 133.9 239.3
 (S) 120.95 379.1



NOTE: Chart not to scale.

- NOTE: RADAR required.
- NOTE: RNAV 1.
- NOTE: DME/DME/IRU or GPS required.
- NOTE: Turbojet aircraft only.
- NOTE: Los Angeles landing east traffic.
- NOTE: Expect runway 7R unless otherwise assigned.
- NOTE: Expect local area altimeter reaching FL230.

ARRIVAL ROUTE DESCRIPTION

From ANJLL on track 240° to cross KAOSS between FL190 and FL230, then on track 244° to cross TOLLA between 14000 and 17000, then on track 244° to cross SLACR at or below 15000, then on track 244° to cross BIGBR between 13000 and 14000.

LANDING RUNWAYS 6L/R: From BIGBR on track 252° to cross DRYSS between 10000 and 12000, then on track 253° to cross TOMYS at or above 9000, then on track 264° to cross CLIFY at 7000 and at 220K, then on track 259° to HNCHE, then on track 251° to cross SASSI at 7000 and at 210K, then on track 251°. Expect RADAR vectors to ILS or RNAV (RNP) RWY 6L final approach course.

LANDING RUNWAYS 7L/R: From BIGBR on track 237° to cross LADDD between 10000 and 12000, then on track 253° to cross JOELZ between 8000 and 9000, then on track 226° to cross NORML at or above 6000 and at 220K, then on track 251° to cross WNDFL at 6000 and at 210K, then on track 251°. Expect RADAR vectors to ILS or RNAV (RNP) RWY 7R final approach course.

LOST COMMUNICATIONS: In the event of lost communication proceed on the RNAV (RNP) RWY 7R or ILS or LOC RWY 7R approach.

(ANJLL.BIGBR3) 181144
BIGBR THREE ARRIVAL (RNAV) Arrival Routes

LOS ANGELES INTL (LAX)
 LOS ANGELES, CALIFORNIA

LOS ANGELES, CALIFORNIA
 LOS ANGELES INTL (LAX)