

MUCLR FOUR DEPARTURE (RNAV)
(MUELR4.FIXT) 17AUG17

(MUELR4.FIXT) 25331
MUCLR FOUR DEPARTURE (RNAV)

AL-237 (FAA)

LOS ANGELES INTL (LAX)
LOS ANGELES, CALIFORNIA

SOCAL DEP CON	125.2	323.275
D-ATIS DEP		135.65
CLNC DEL	120.35	327.0
CPDLC		
GND CON		
(N)	121.65	327.0
(S)	121.75	327.0
(W)	121.4	327.0
LOS ANGELES TOWER		
(N)	133.9	239.3
(S)	120.95	379.1

**TOP ALTITUDE:
10000**

TAKEOFF MINIMUMS

Rwys 6L/R, 7L/R: NA-ATC.

Rwys 24L/R, 25L/R: Standard with minimum climb of 500' per NM to 640.

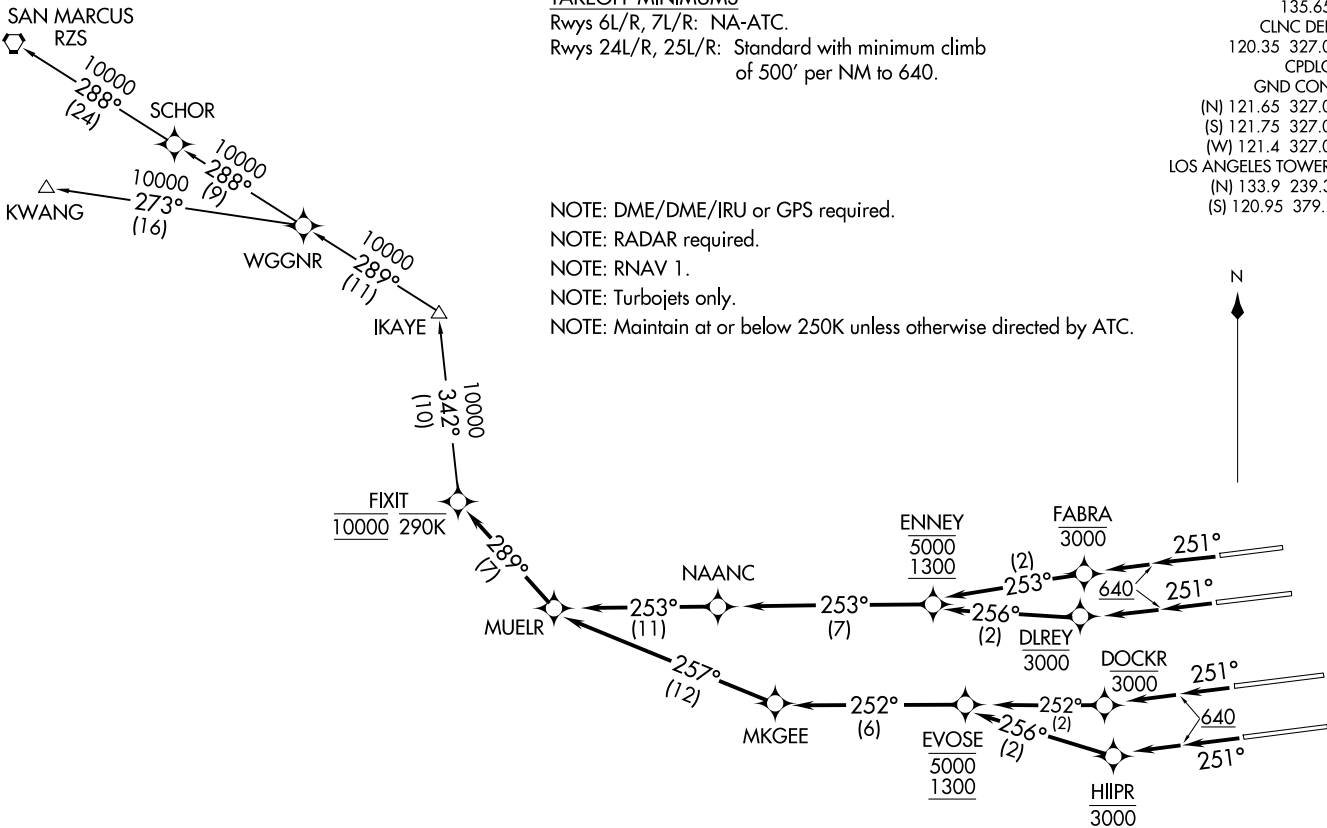
NOTE: DME/DME/IRU or GPS required.

NOTE: RADAR required.

NOTE: RNAV 1.

NOTE: Turbojets only.

NOTE: Maintain at or below 250K unless otherwise directed by ATC.



NOTE: Chart not to scale.

(CONTINUED ON FOLLOWING PAGE)

LOS ANGELES, CALIFORNIA
LOS ANGELES INTL (LAX)



DEPARTURE ROUTE DESCRIPTION

TAKEOFF RUNWAY 24L: Climb on heading 251° to 640, then climb direct to cross DLREY at or below 3000, then on track 256° to cross ENNEY at or above 1300 and at or below 5000, then on depicted route to cross FIXIT at 10000, thence. . . .

TAKEOFF RUNWAY 24R: Climb on heading 251° to 640, then climb direct to cross FABRA at or below 3000, then on track 253° to cross ENNEY at or above 1300 and at or below 5000, then on depicted route to cross FIXIT at 10000, thence. . . .

TAKEOFF RUNWAY 25L: Climb on heading 251° to 640, then climb direct to cross HIIPR at or below 3000, then on track 256° to cross EVOSE at or above 1300 and at or below 5000, then on depicted route to cross FIXIT at 10000, thence. . . .

TAKEOFF RUNWAY 25R: Climb on heading 251° to 640, then climb direct to cross DOCKR at or below 3000, then on track 252° to cross EVOSE at or above 1300 and at or below 5000, then on depicted route to cross FIXIT at 10000, thence. . . .

. . . . on (transition). Maintain 10000. Expect filed altitude five minutes after departure.

KWANG TRANSITION (MUEL4.KWANG)

SAN MARCUS TRANSITION (MUEL4.RZS)

SW-3, 16 APR 2026 to 14 MAY 2026

SW-3, 16 APR 2026 to 14 MAY 2026