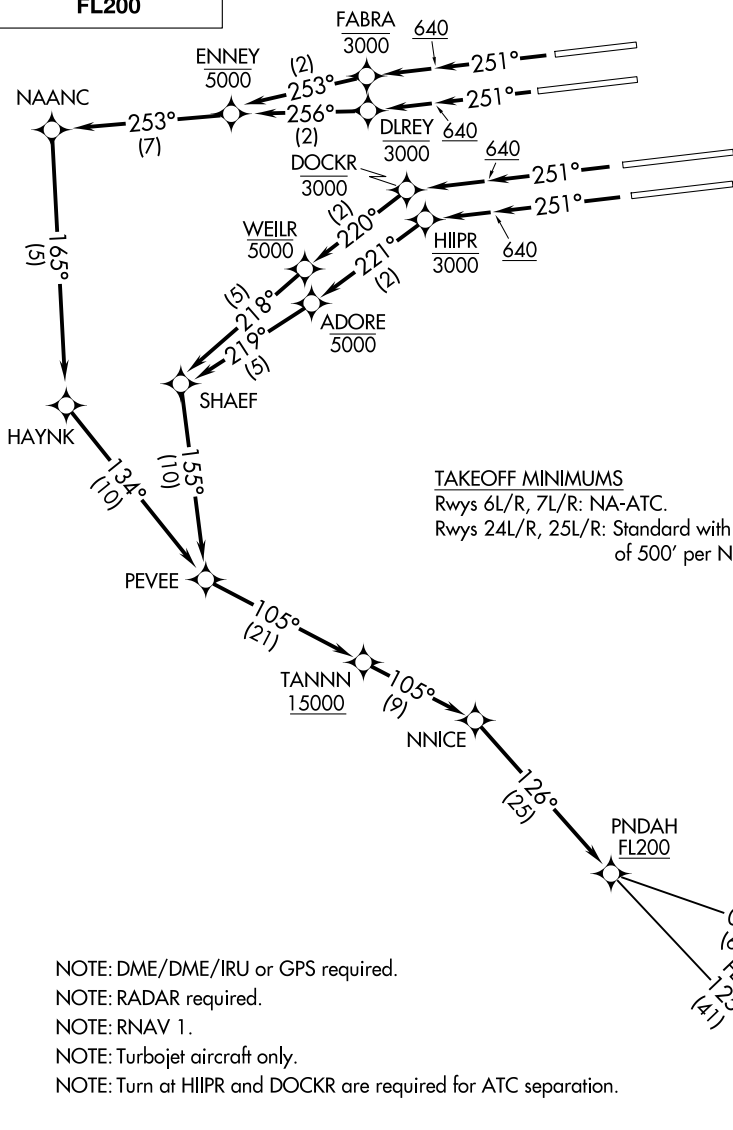


PNDHA TWO DEPARTURE (RNAV)

AL-237 (FAA)

LOS ANGELES INTL (LAX)
LOS ANGELES, CALIFORNIA

**TOP ALTITUDE:
FL200**



TAKEOFF MINIMUMS
 Rwy 6L/R, 7L/R: NA-ATC.
 Rwy 24L/R, 25L/R: Standard with minimum climb
 of 500' per NM to 640.

SOCAL DEP CON 124.3 363.2
 D-ATIS DEP 135.65
 CLNC DEL 120.35 327.0
 CPDLC
 GND CON (N) 121.65 327.0
 (S) 121.75 327.0
 (W) 121.4 327.0
 LOS ANGELES TOWER (N) 133.9 239.3
 (S) 120.95 379.1

- NOTE: DME/DME/IRU or GPS required.
- NOTE: RADAR required.
- NOTE: RNAV 1.
- NOTE: Turbojet aircraft only.
- NOTE: Turn at HIIPR and DOCKR are required for ATC separation.

(CONTINUED ON FOLLOWING PAGE)

NOTE: Chart not to scale.

PNDHA TWO DEPARTURE (RNAV)

LOS ANGELES, CALIFORNIA
LOS ANGELES INTL (LAX)

SW-3, 16 APR 2026 to 14 MAY 2026

SW-3, 16 APR 2026 to 14 MAY 2026



DEPARTURE ROUTE DESCRIPTION

TAKEOFF RUNWAY 24L: Climb heading 251° to 640, then climb direct to cross DLREY at or below 3000, then on track 256° to cross ENNEY at or below 5000, then on depicted route to PNDHAH, thence. . . .

TAKEOFF RUNWAY 24R: Climb heading 251° to 640, then climb direct to cross FABRA at or below 3000, then on track 253° to cross ENNEY at or below 5000, then on depicted route to PNDHAH, thence. . . .

TAKEOFF RUNWAY 25L: Climb heading 251° to 640, then climb direct to cross HIIPR at or below 3000, then on track 221° to cross ADORE at or below 5000, then on depicted route to PNDHAH, thence. . . .

TAKEOFF RUNWAY 25R: Climb heading 251° to 640, then climb direct to cross DOCKR at or below 3000, then on track 220° to cross WEILR at or below 5000, then on depicted route to PNDHAH, thence. . . .

. . . .on (transition). Maintain FL200. Expect filed altitude five minutes after departure.

OTAYY TRANSITION (PNDHAH2.OTAYY)

TCATE TRANSITION (PNDHAH2.TCATE)

SW-3, 16 APR 2026 to 14 MAY 2026

SW-3, 16 APR 2026 to 14 MAY 2026