

RNAV (RNP) Z RWY 24L


LOS ANGELES INTL (LAX)

APP CRS	Rwy Ldg	9483
251°	TDZE	123
	Apt Elev	128

RNP AR APCH.

Simultaneous approach authorized. Simultaneous approach authorized with HHR.
 For uncompensated Baro-VNAV systems, procedure NA below 5°C or above 54°C. For inop ALS, increase RNP 0.15 all Cats visibility to 1½ SM.

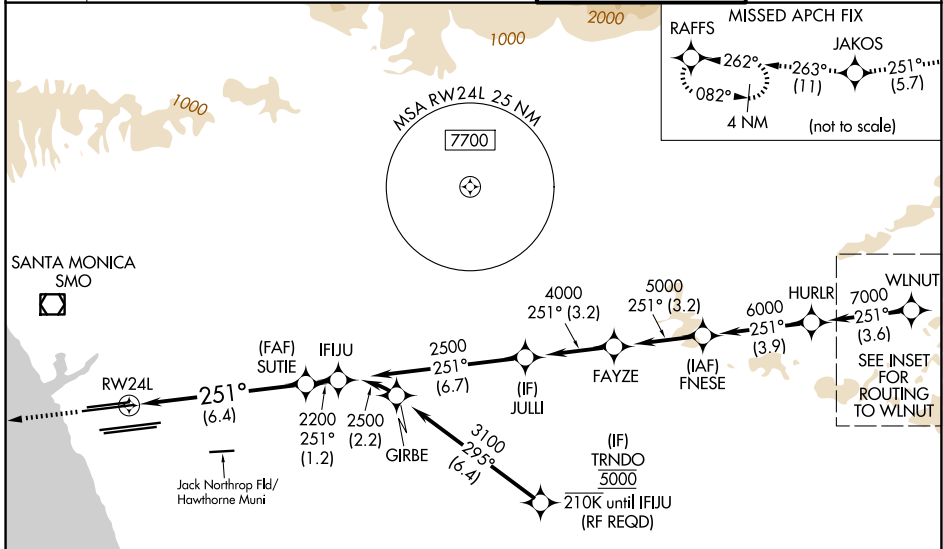
MALSRR



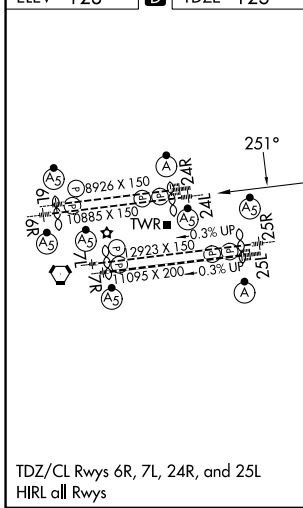
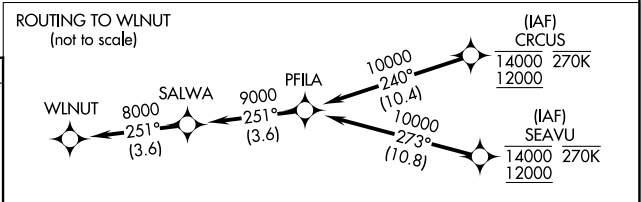
MISSED APPROACH: Climb to 2000 on track 251° to JAKOS and track 263° to RAFFS and hold.

D-ATIS	124.3 363.2 (APCH from W)	SOCAL APP CON	124.9 269.0 (090°-224°)
133.8	124.5 235.975 (225°-044°)		128.5 360.7 (045°-089°)

LOS ANGELES TOWER	133.9 239.3 (N)	GND CON	121.65 327.0 (N)
	120.95 379.1 (S)		121.75 327.0 (S)
			121.4 327.0 (W)



ELEV	128	D	TDZE	123
------	------------	----------	------	------------



TDZ/CL Rwy's 6R, 7L, 24R, and 25L
 HIRL all Rwy's

AUTHORIZATION REQUIRED

SW-3, 16 APR 2026 to 14 MAY 2026

SW-3, 16 APR 2026 to 14 MAY 2026