

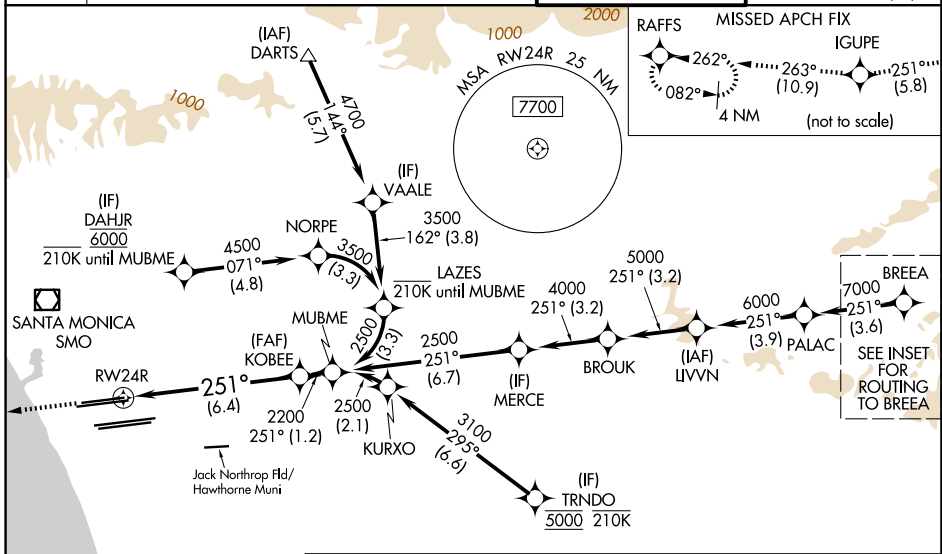
APP CRS	Rwy Ldg	8926
251°	TDZE	122
	Apt Elev	128

RNAV (RNP) Z RWY 24R

LOS ANGELES INTL (LAX)

RNP AR APCH-GPS.		ALSF-2	MISSED APPROACH: Climb to 2000 on track 251° to IGUPE and track 263° to RAFFS and hold.
<p>▼ Simultaneous approach authorized with HHR. For uncompensated Baro-VNAV systems, procedure NA below 5°C or above 54°C. For inop ALS, increase RNP 0.15 all Cats visibility to RVR 6000 and RNP 0.30 all Cats visibility to 1½ SM. Simultaneous approach authorized.</p>			

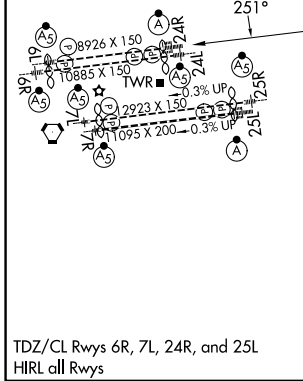
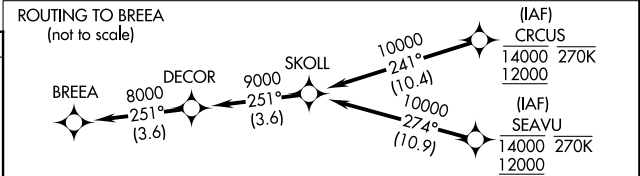
D-ATIS	SOCAL APP CON	LOS ANGELES TOWER	GND CON
133.8	124.3 363.2 (APCH from W) 124.9 269.0 (090°-224°)	133.9 239.3 (N) 120.95 379.1 (S)	121.65 327.0 (N) 121.75 327.0 (S) 121.4 327.0 (W)
	124.5 235.975 (225°-044°) 128.5 360.7 (045°-089°)		



SW-3, 16 APR 2026 to 14 MAY 2026

SW-3, 16 APR 2026 to 14 MAY 2026

ELEV 128	D	TDZE 122
----------	----------	----------



2000	IGUPE	tr 251°	RAFFS	See planview for multiple IF locations.
		tr 263°		

CATEGORY	A	B	C	D
RNP 0.15 DA		484/40	362 (400-¾)	
RNP 0.30 DA		586/60	464 (500-1½)	

TDZ/CL Rwys 6R, 7L, 24R, and 25L
HIRL all Rwys

AUTHORIZATION REQUIRED