

APP CRS	Rwy Ldg	<b>11095</b>
<b>251°</b>	TDZE	<b>104</b>
	Apt Elev	<b>128</b>

# RNAV (RNP) Z RWY 25L

LOS ANGELES INTL (LAX)

RNP AR APCH.

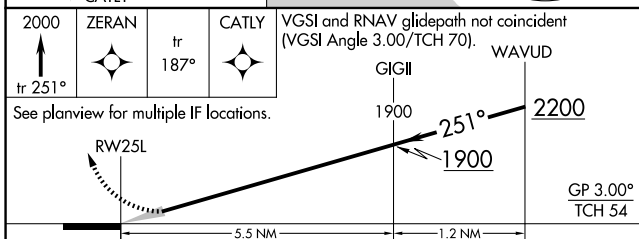
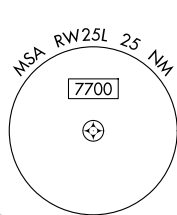
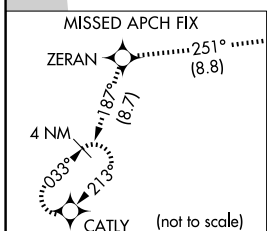
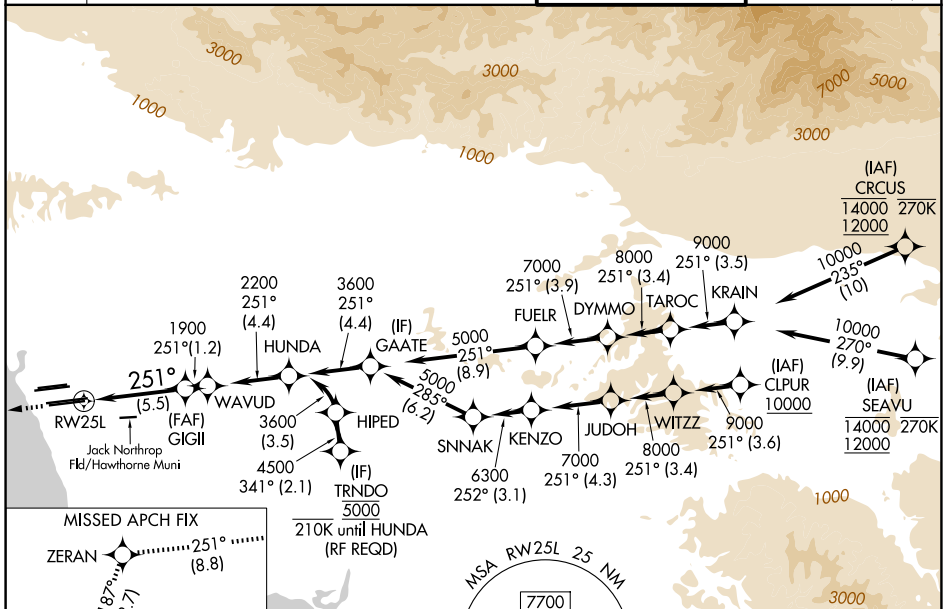
▼ GPS required. For uncompensated Baro-VNAV systems, procedure NA below 5°C or above 54°C. Simultaneous approach authorized. Simultaneous approach authorized with HHR.

ALSF-2

MISSED APPROACH: Climb to 2000 on track 251° to ZERAN and on track 187° to CATLY and hold.

D-ATIS	SOCAL APP CON	
<b>133.8</b>	<b>124.3 363.2</b> (APCH from W)	<b>124.9 269.0</b> (090°-224°)
	<b>124.5 235.975</b> (225°-044°)	<b>128.5 360.7</b> (045°-089°)

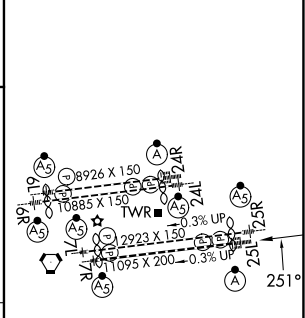
LOS ANGELES TOWER	GND CON
<b>133.9 239.3</b> (N)	<b>121.65 327.0</b> (N)
<b>120.95 379.1</b> (S)	<b>121.75 327.0</b> (S)
	<b>121.4 327.0</b> (W)



CATEGORY	A	B	C	D
RNP 0.15 DA		445/30	341 (400- $\frac{5}{8}$ )	
RNP 0.30 DA		543/50	439 (500-1)	

**AUTHORIZATION REQUIRED**

ELEV 128	<b>D</b> TDZE 104
----------	-------------------



TDZ/CL Rwy's 6R, 7L, 24R, and 25L  
HIRL all Rwy's

SW-3, 16 APR 2026 to 14 MAY 2026

SW-3, 16 APR 2026 to 14 MAY 2026