


APP CRS	Rwy Ldg	<b>11259</b>
<b>071°</b>	TDZE	<b>128</b>
	Apt Elev	<b>128</b>

# RNAV (RNP) Z RWY 7L

LOS ANGELES INTL (LAX)

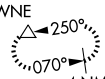
**▽** For uncompensated Baro-VNAV systems, procedure NA below 5°C (41°F) or above 54°C (130°F). GPS required. Simultaneous approach authorized. For inop ALS, increase RNP 0.11 all Cats visibility to RVR 5000 and RNP 0.30 all Cats visibility to RVR 6000.

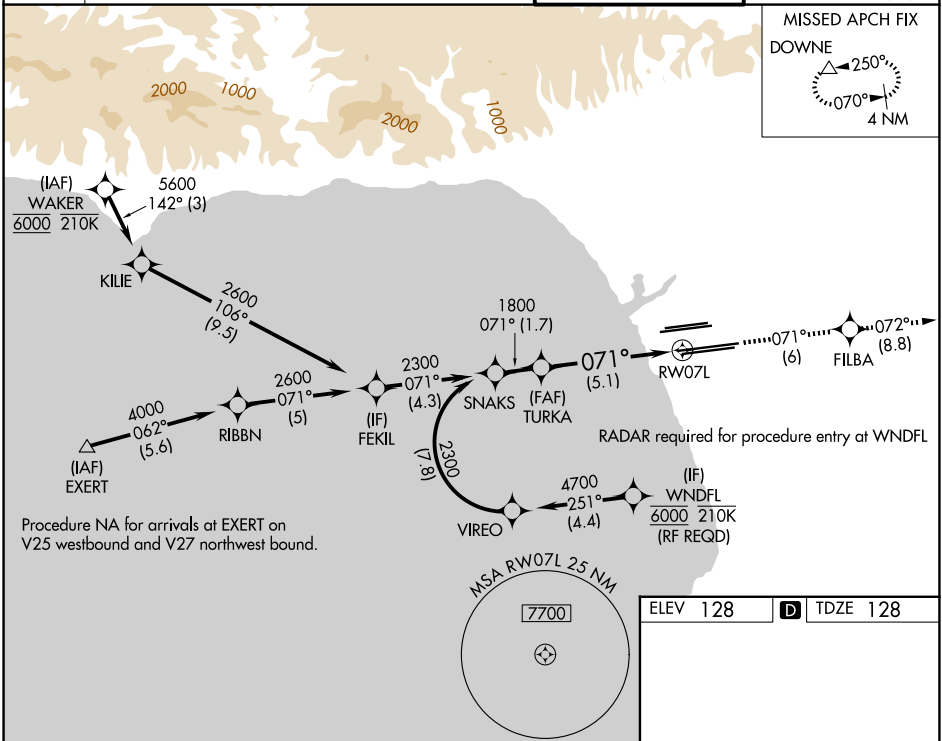
**MALSR**



**MISSED APPROACH:** Climb to 3000 on track 071° to FILBA and on track 072° to DOWNE and hold.

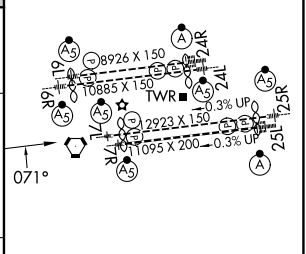
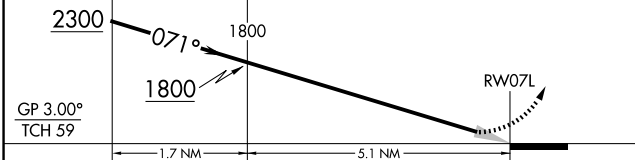
D-ATIS	SOCAL APP CON				LOS ANGELES TOWER	
<b>133.8</b>	<b>124.3 363.2</b> (APCH from W)	<b>124.9 269.0</b> (090°-224°)	<b>128.5 360.7</b> (045°-089°)	<b>133.9 239.3</b> (N)	<b>GND CON</b>	
	<b>124.5 235.975</b> (225°-044°)			<b>120.95 379.1</b> (S)	<b>121.65 327.0</b> (N)	<b>121.75 327.0</b> (S)
					<b>121.4 327.0</b> (W)	

<b>MISSED APCH FIX</b>	
DOWNE	
	
4 NM	



VGSI and RNAV glidepath not coincident (VGSI Angle 3.00/TCH 83).

3000	FILBA	tr 071°	DOWNE
		tr 072°	



CATEGORY	A	B	C	D
RNP 0.11 DA		441/24	313 (400-½)	
RNP 0.30 DA		485/40	357 (400-¾)	

## AUTHORIZATION REQUIRED

TDZ/CL Rwy's 6R, 7L, 24R, and 25L  
HIRL all Rwy's

SW-3, 16 APR 2026 to 14 MAY 2026

SW-3, 16 APR 2026 to 14 MAY 2026