

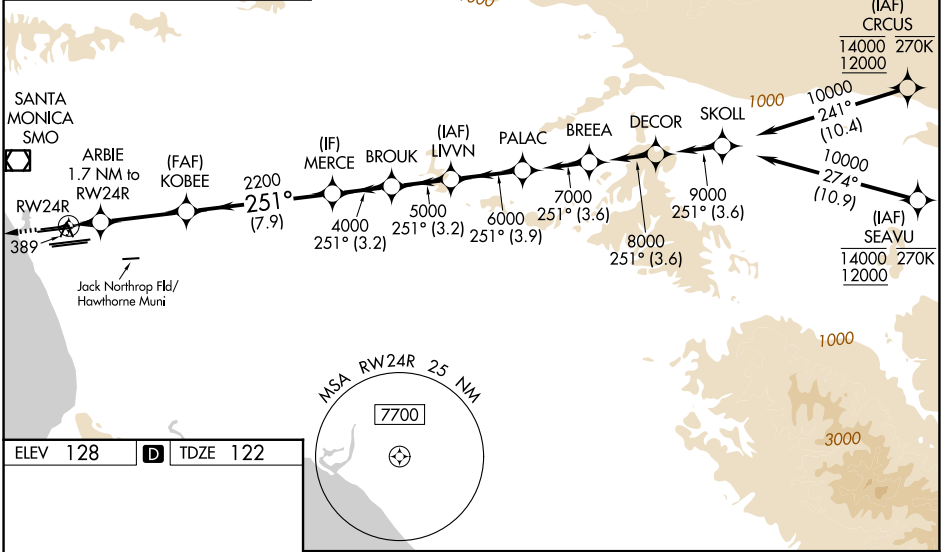
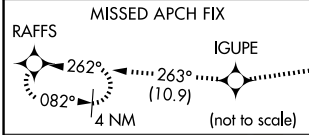
RNAV (GPS) Y RWY 24R

LOS ANGELES INTL (LAX)

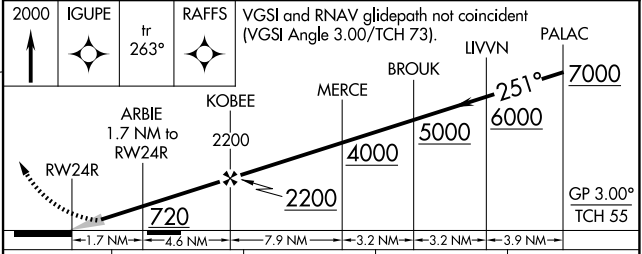
WAAS CH 69307 W24A	APP CRS 251°	Rwy Ldg TDZE 122 Apt Elev 128	8926
--	------------------------	---	-------------

RNP APCH.	<p>▼ LNAV procedure NA during simultaneous operations. Use of FD or AP required during simultaneous operations. Simultaneous approach authorized with HHR. For uncompensated Baro-VNAV systems, LNAV/VNAV NA below 6°C or above 54°C. Simultaneous approach authorized. For inop ALS, increase LNAV/VNAV all Cats visibility to 1½ SM, and LNAV Cat C/D visibility to 1¾ SM.</p>	ALSF-2 	MISSED APPROACH: Climb to 2000 direct IGUPE and track 263° to RAFFS and hold.
-----------	--	------------	--

D-ATIS 133.8	SOCAL APP CON 124.3 363.2 (APCH from W) 124.9 269.0 (090°-224°) 124.5 235.975 (225°-044°) 128.5 360.7 (045°-089°)	LOS ANGELES TOWER 133.9 239.3 (N) 120.95 379.1 (S)	GND CON 121.65 327.0 (N) 121.75 327.0 (S) 121.4 327.0 (W)
------------------------	---	--	---



ELEV 128	D	TDZE 122
TDZ/CL Rwyrs 6w, 7L, 24R, and 25L HIRL all Rwy		



CATEGORY	A	B	C	D
LPV DA		322/18	200 (200-½)	
LNAV/VNAV DA		589/60	467 (500-1¼)	
LNAV MDA	640/24	518 (600-½)	640/55	518 (600-1)

SW-3, 16 APR 2026 to 14 MAY 2026

SW-3, 16 APR 2026 to 14 MAY 2026