

WAAS CH <b>53507</b> <b>W25A</b>	APP CRS <b>251°</b>	Rwy Ldg <b>11095</b> TDZE <b>104</b> Apt Elev <b>128</b>
--	------------------------	--

# RNAV (GPS) Y RWY 25L

LOS ANGELES INTL (LAX)

RNP APCH - GPS.

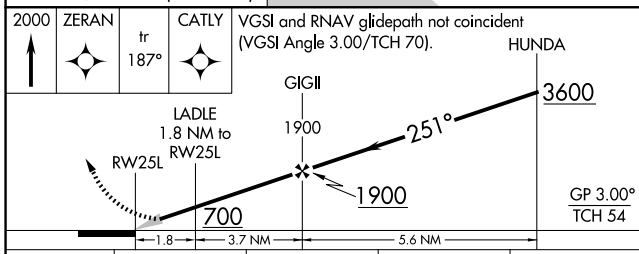
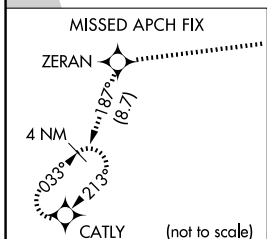
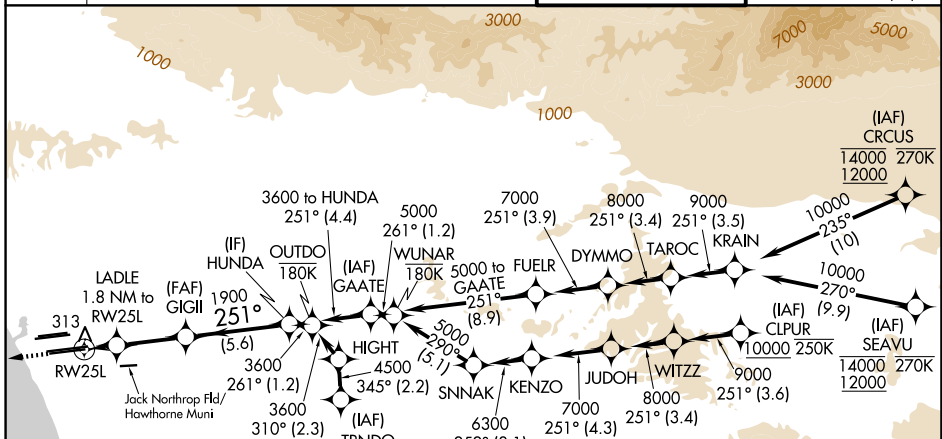
▼ For uncompensated Baro-VNAV systems, LNAV/VNAV NA below 5°C or above 54°C. Simultaneous approach authorized. Simultaneous approach authorized with HHR 25. For inop ALS, increase LNAV/VNAV all Cats visibility to RVR 5500, LNAV Cat C/D visibility to 1½ SM. LNAV procedure NA during simultaneous operations. Use of FD or AP required during simultaneous operations.

ALSF-2



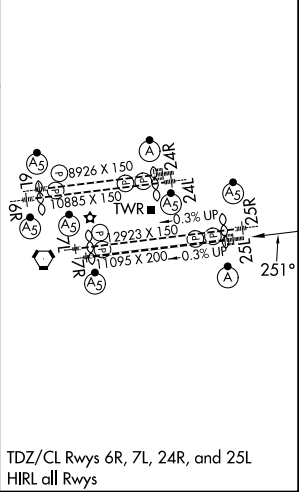
MISSED APPROACH: Climb to 2000 direct ZERAN and on track 187° to CATLY and hold.

D-ATIS <b>133.8</b>	SOCAL APP CON <b>124.3 363.2</b> (APCH from W) <b>124.9 269.0</b> (090°-224°) <b>124.5 235.975</b> (225°-044°) <b>128.5 360.7</b> (045°-089°)	LOS ANGELES TOWER <b>133.9 239.3</b> (N) <b>120.95 379.1</b> (S)	GND CON <b>121.65 327.0</b> (N) <b>121.75 327.0</b> (S) <b>121.4 327.0</b> (W)
------------------------	---	--	---



CATEGORY	A	B	C	D
LPV DA		304/18	200 (200-½)	
LNAV/VNAV DA		479/35	375 (400-¾)	
LNAV MDA	580/24	476 (500-½)	580/50	476 (500-1)

ELEV 128	TDZE 104
----------	----------



SW-3, 16 APR 2026 to 14 MAY 2026

SW-3, 16 APR 2026 to 14 MAY 2026