

WAAS CH 82507 W06A	APP CRS 071°	Rwy Ldg 8566 TDZE 119 Apt Elev 128
--	------------------------	---

RNAV (GPS) Y RWY 6L

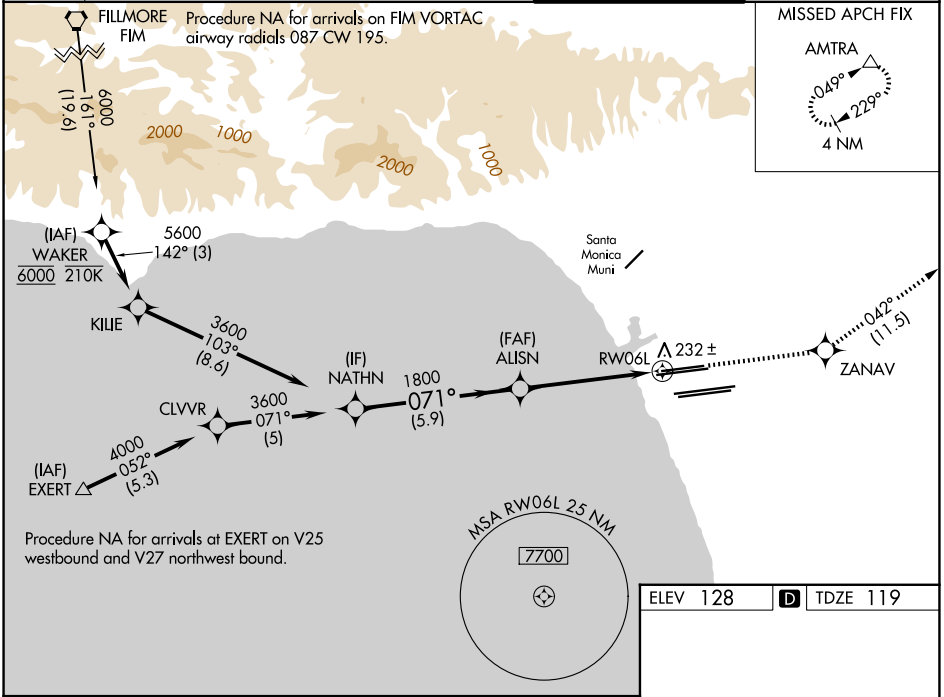
LOS ANGELES INTL (LAX)

▽ For uncompensated Baro-VNAV systems, LNAV/VNAV NA below 5°C (41°F) or above 54°C (130°F). DME/DME RNP-0.3 NA. LNAV procedure NA during simultaneous operations. Use of FD or AP providing RNAV track guidance required during simultaneous operations. Simultaneous approach authorized.



MISSED APPROACH: Climb to 3000 direct ZANAV and track 042° to AMTRA and hold.

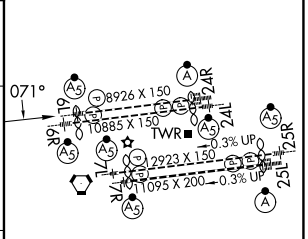
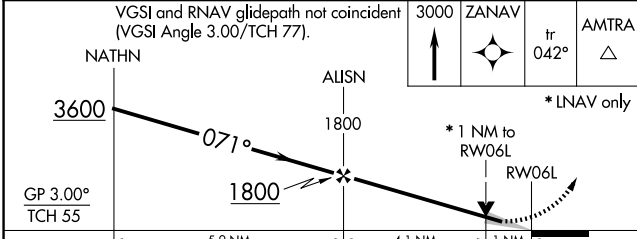
D-ATIS 133.8	SOCAL APP CON 124.3 363.2 (APCH from W) 124.5 235.975 (225°-044°)	124.9 269.0 (090°-224°) 128.5 360.7 (045°-089°)	LOS ANGELES TOWER 133.9 239.3 (N) 120.95 379.1 (S)	GND CON 121.65 327.0 (N) 121.75 327.0 (S) 121.4 327.0 (W)
------------------------	---	--	--	---



SW-3, 16 APR 2026 to 14 MAY 2026

SW-3, 16 APR 2026 to 14 MAY 2026

ELEV 128	D TDZE 119
----------	-------------------



CATEGORY	A	B	C	D
LPV DA		369/24	250 (300-½)	
LNAV/VNAV DA		411/24	292 (300-½)	
LNAV MDA	500/24	381 (400-½)	500/35	381 (400-¾)

TDZ/CL Rwy's 6R, 7L, 24R, and 25L
HIRL all Rwy's