

WAAS CH 61207 W06B	APP CRS 071°	Rwy Ldg TDZE Apt Elev	9748 116 128
--	------------------------	-----------------------------	---

RNAV (GPS) Y RWY 6R

LOS ANGELES INTL (LAX)

▼ For uncompensated Baro-VNAV systems, LNAV/VNAV NA below 5°C (41°F) or above 54°C (130°F). DME/DME RNP-0.3 NA. For inop ALS, increase LNAV/VNAV all Cats visibility to RVR 4500, LNAV Cat C and D visibility to RVR 5500. Simultaneous approach authorized. LNAV procedure NA during simultaneous operations. Use of FD or AP providing RNAV track guidance required during simultaneous operations.
RVR 1800 authorized with use of FD or AP or HUD to DA.

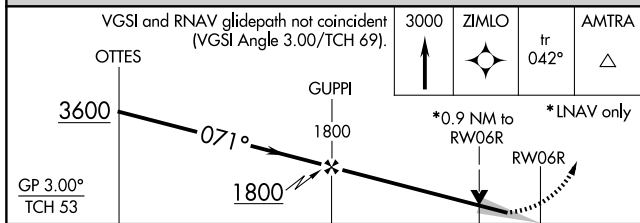
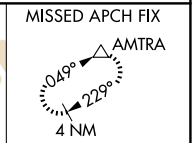
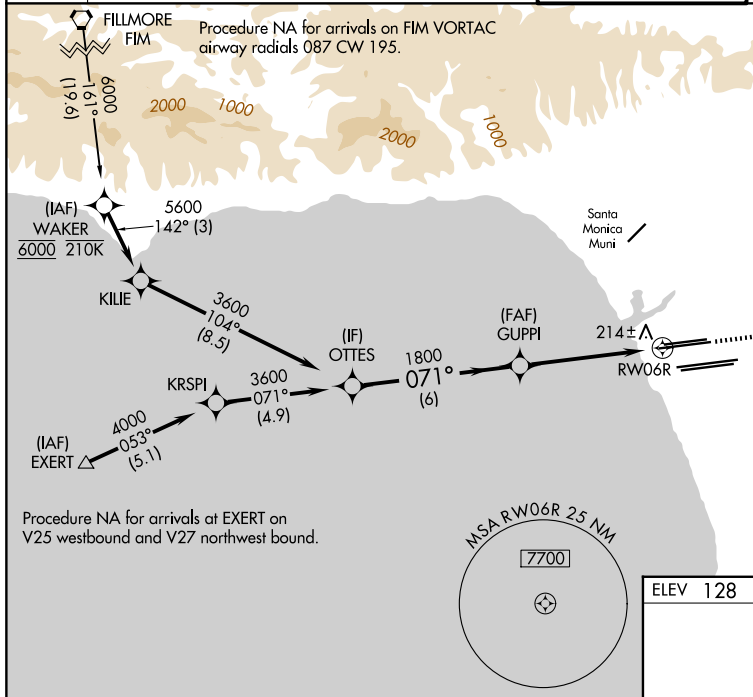
MALSR



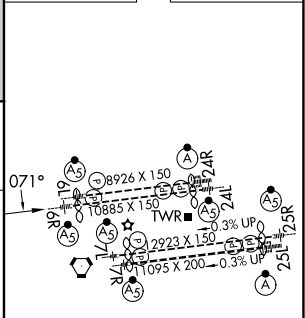
MISSED APPROACH:
Climb to 3000 direct ZIMLO and track 042° to AMTRA and hold.

D-ATIS 133.8	SOCAL APP CON		LOS ANGELES TOWER 133.9 239.3 (N) 120.95 379.1 (S)
	124.3 363.2 (APCH from W)	124.9 269.0 (090°-224°)	
	124.5 235.975 (225°-044°)	128.5 360.7 (045°-089°)	

GND CON	121.65 327.0 (N)
	121.75 327.0 (S)
	121.4 327.0 (W)



ELEV 128	D TDZE 116
----------	-------------------



CATEGORY	A	B	C	D
LPV DA#		316/24	200 (200-½)	
LNAV/VNAV DA		398/24	282 (300-½)	
LNAV MDA	480/24	364 (400-½)	480/35	364 (400-¾)

TDZ/CL Rwy 6R, 7L, 24R, and 25L
HIRL all Rwy's

SW-3, 16 APR 2026 to 14 MAY 2026

SW-3, 16 APR 2026 to 14 MAY 2026