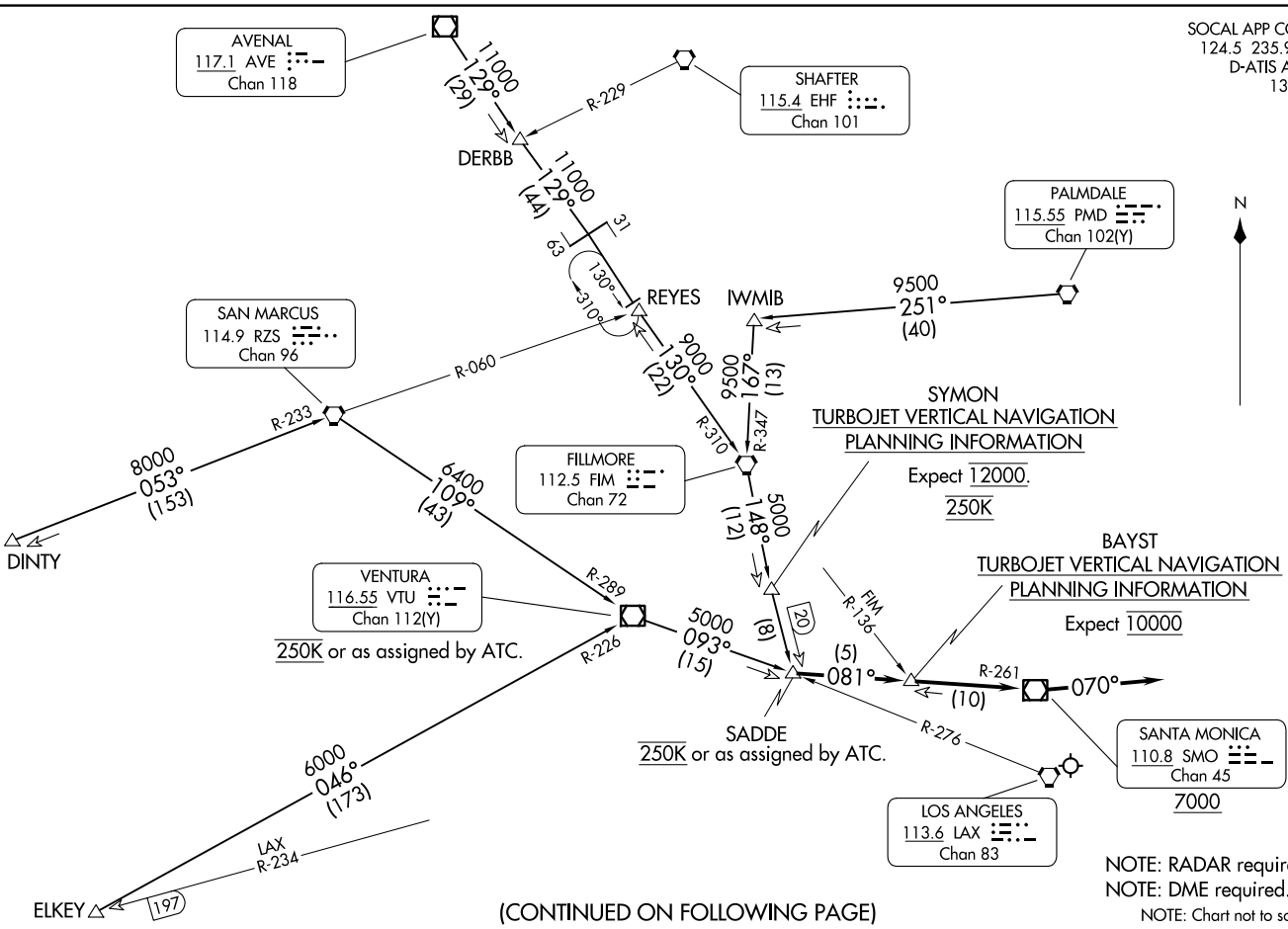


SOCAL APP CON
124.5 235.975
D-ATIS ARR
133.8

(SADDE: SADDE8) 23334
SADDE EIGHT ARRIVAL

AL-237 (FAA)

LOS ANGELES INTL (LAX)
LOS ANGELES, CALIFORNIA



(CONTINUED ON FOLLOWING PAGE)

SADDE EIGHT ARRIVAL
(SADDE: SADDE8) 07DEC17

LOS ANGELES, CALIFORNIA
LOS ANGELES INTL (LAX)

ELKEY \triangle (197)

DINTY \triangle

AVENAL
117.1 AVE \ddots -
Chan 118

SHAFTER
115.4 EHF \ddots .
Chan 101

PALMDALE
115.55 PMD \ddots .
Chan 102(Y)

SAN MARCUS
114.9 RZS \ddots .
Chan 96

FILLMORE
112.5 FIM \ddots .
Chan 72

VENTURA
116.55 VTU \ddots -
Chan 112(Y)

SANTA MONICA
110.8 SMO \ddots -
Chan 45

LOS ANGELES
113.6 LAX \ddots .
Chan 83

8000
053°
(153)

6400
109°
(43)

250K or as assigned by ATC.

250K or as assigned by ATC.

6000
046°
(173)

LAX
R-234

081°
(5)

070°
(10)

7000

ARRIVAL ROUTE DESCRIPTION

AVENAL TRANSITION (AVE.SADDE8): From over AVE VOR/DME on AVE R-129 and FIM R-310 to FIM VORTAC, then on FIM R-148 to SADDE. Thence. . . .

DERBB TRANSITION (DERBB.SADDE8): From over DERBB on AVE R-129 and FIM R-310 to FIM VORTAC, then on FIM R-148 to SADDE. Thence. . . .

DINTY TRANSITION (DINTY.SADDE8): From over DINTY on RZS R-233 to RZS VORTAC, then on RZS R-109 and VTU R-289 to VTU VOR/DME, then on VTU R-093 to SADDE. Thence. . . .

ELKEY TRANSITION (ELKEY.SADDE8): From over ELKEY on VTU R-226 to VTU VOR/DME then on VTU R-093 to SADDE. Thence. . . .

FILLMORE TRANSITION (FIM.SADDE8): From over FIM VORTAC on FIM R-148 to SADDE. Thence. . . .

PALMDALE TRANSITION (PMD.SADDE8): From over PMD VORTAC on PMD R-251 and FIM R-347 to FIM VORTAC, then on FIM R-148 to SADDE. Thence. . . .

SAN MARCUS TRANSITION (RZS.SADDE8): From over RZS VORTAC on RZS R-109 and VTU R-289 to VTU VOR/DME, then on VTU R-093 to SADDE. Thence. . . .

VENTURA TRANSITION (VTU.SADDE8): From over VTU VOR/DME on VTU R-093 to SADDE. Thence. . . .

. . . From SADDE on SMO VOR/DME R-261 to cross SMO VOR/DME at or above 7000. Then on heading 070°. Expect RADAR vectors to final approach course.

LOST COMMUNICATIONS

In the event of lost communications proceed on the ILS or LOC RWY 24R.

SW-3, 16 APR 2026 to 14 MAY 2026

SW-3, 16 APR 2026 to 14 MAY 2026