

(SKWRL2.SKWRL) 25331

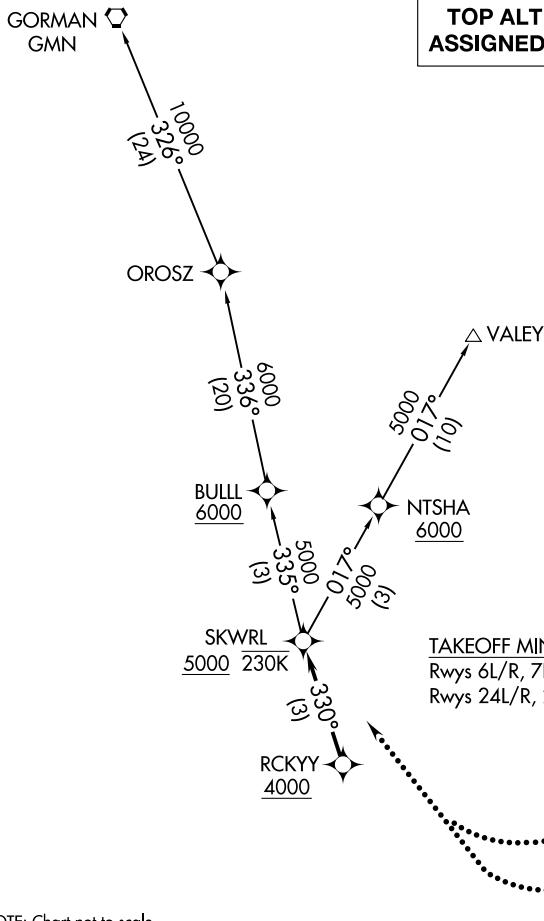
# SKWRL TWO DEPARTURE (RNAV)

AL-237 (FAA)

LOS ANGELES INTL (LAX)  
LOS ANGELES, CALIFORNIA

**TOP ALTITUDE:  
ASSIGNED BY ATC**

SOCAL DEP CON  
125.2 323.275  
D-ATIS DEP  
135.65  
CLNC DEL  
120.35 327.0  
CPDLC  
GND CON  
(N) 121.65 327.0  
(S) 121.75 327.0  
(W) 121.4 327.0  
LOS ANGELES TOWER  
(N) 133.9 239.3  
(S) 120.95 379.1



NOTE: DME/DME/IRU or GPS required.  
NOTE: RADAR required.  
NOTE: RNAV 1.  
NOTE: Turboprop aircraft only.

### TAKEOFF MINIMUMS

Rwys 6L/R, 7L/R: NA-ATC.

Rwys 24L/R, 25L/R: Standard with minimum climb of 500' per NM to 640.

NOTE: Chart not to scale.

### DEPARTURE ROUTE DESCRIPTION

TAKEOFF RUNWAYS 24L/R, 25 L/R: Climb heading 251° to 640, then on heading 251° or as assigned by ATC, expect vectors to cross RCKYY at or above 4000, then on track 330° to cross SKWRL at or above 5000, thence. . . .

. . . .on (transition). Maintain ATC assigned altitude. Expect filed altitude five minutes after departure.

LOST COMMUNICATIONS: If not in contact with departure control within five minutes after departure, turn right and proceed direct SKWRL W/P, climb to 7000 or filed altitude whichever is lower, and when able proceed direct filed or assigned route/fix/transition. Aircraft filing 8000 or above, climb to filed altitude ten minutes after departure.

GORMAN TRANSITION (SKWRL2.GMN)

VALEY TRANSITION (SKWRL2.VALEY)

# SKWRL TWO DEPARTURE (RNAV)

(SKWRL2.SKWRL) 17AUG17

LOS ANGELES, CALIFORNIA  
LOS ANGELES INTL (LAX)

SW-3, 16 APR 2026 to 14 MAY 2026

SW-3, 16 APR 2026 to 14 MAY 2026