

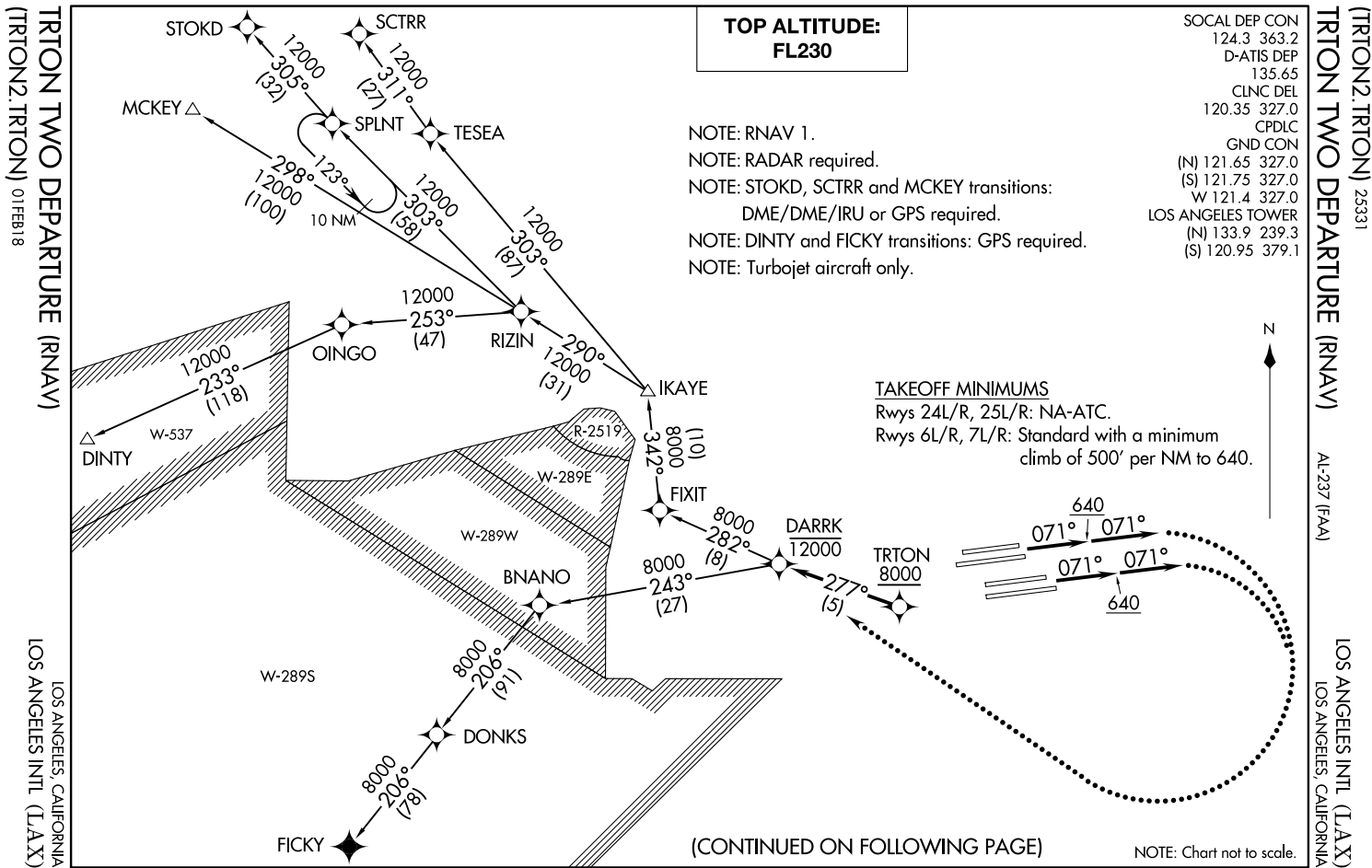
**TOP ALTITUDE:
FL230**

SOCAL DEP CON
124.3 363.2
D-ATIS DEP
135.65
CLNC DEL
120.35 327.0
CPDLC
GND CON
(N) 121.65 327.0
(S) 121.75 327.0
W 121.4 327.0
LOS ANGELES TOWER
(N) 133.9 239.3
(S) 120.95 379.1

NOTE: RNAV 1.
NOTE: RADAR required.
NOTE: STOKD, SCTRR and MCKEY transitions:
DME/DME/IRU or GPS required.
NOTE: DINTY and FICKY transitions: GPS required.
NOTE: Turbojet aircraft only.

TAKEOFF MINIMUMS

Rwys 24L/R, 25L/R: NA-ATC.
Rwys 6L/R, 7L/R: Standard with a minimum
climb of 500' per NM to 640.



(CONTINUED ON FOLLOWING PAGE)

NOTE: Chart not to scale.



DEPARTURE ROUTE DESCRIPTION

TAKEOFF RUNWAYS 6L/R, 7L/R: Climb on heading 071° to 640, then climb on heading 071° or as assigned by ATC, expect vectors to cross TRTON at or above 8000, then on track 277° to cross DARRK at or below 12000, thence. . . .

. . . .on (transition) maintain FL230. Expect filed altitude 5 minutes after departure.

LOST COMMUNICATIONS

If not in contact with departure control within 5 minutes after departure, turn right and proceed direct DARRK WP, cross DARRK at or below 12000'. Climb to FL230 or filed altitude, whichever is lower, and when able proceed direct filed route or assigned route/fix/transition. Aircraft filing FL240 or above, climb to filed altitude ten minutes after departure.

DINTY TRANSITION (TRTON2.DINTY)

FICKY TRANSITION (TRTON2.FICKY)

MCKEY TRANSITION (TRTON2.MCKEY)

SCTRR TRANSITION (TRTON2.SCTRR)

STOKD TRANSITION (TRTON2.STOKD)

SW-3, 16 APR 2026 to 14 MAY 2026

SW-3, 16 APR 2026 to 14 MAY 2026