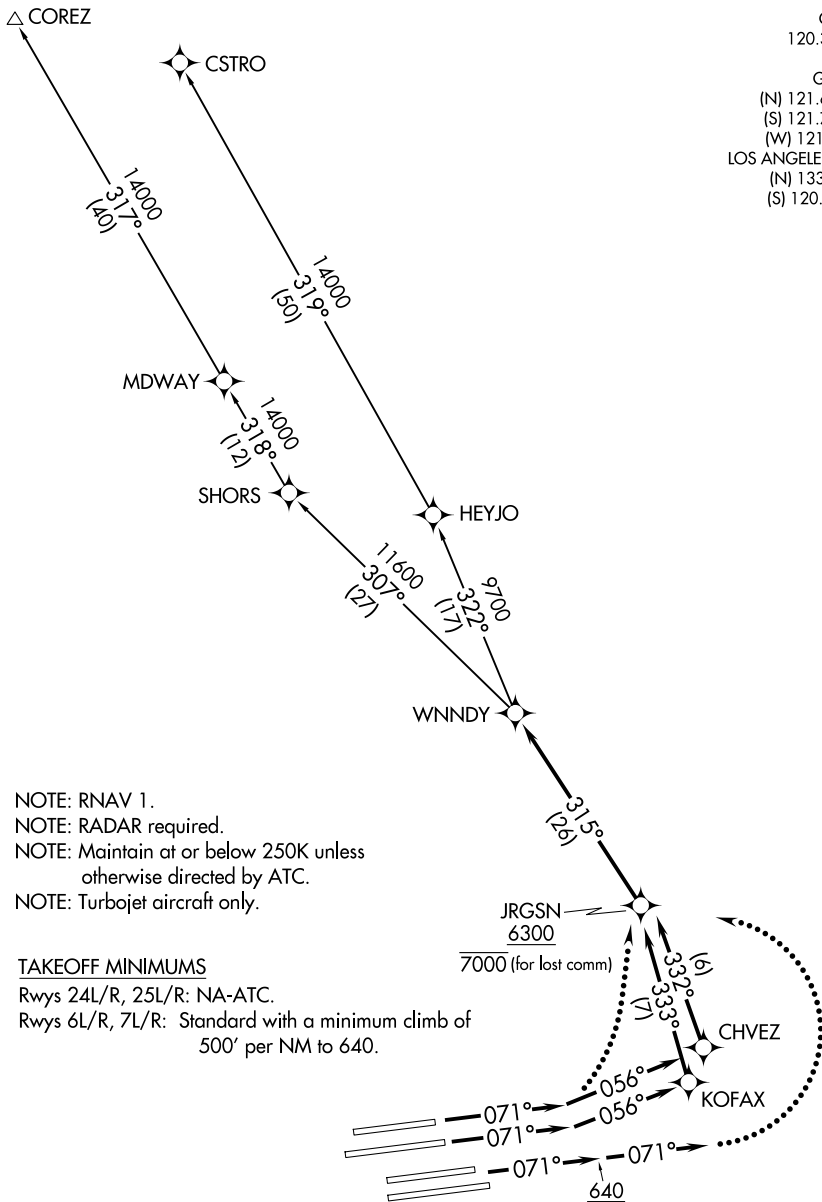


**TOP ALTITUDE:  
FL230**

SOCAL DEP CON	125.2 323.275
D-ATIS DEP	135.65
CLNC DEL	120.35 327.0
CPDLC	
GND CON	
(N) 121.65 327.0	
(S) 121.75 327.0	
(W) 121.4 327.0	
LOS ANGELES TOWER	
(N) 133.9 239.3	
(S) 120.95 379.1	



NOTE: RNAV 1.  
 NOTE: RADAR required.  
 NOTE: Maintain at or below 250K unless otherwise directed by ATC.  
 NOTE: Turbojet aircraft only.

TAKEOFF MINIMUMS

Rwys 24L/R, 25L/R: NA-ATC.  
 Rwys 6L/R, 7L/R: Standard with a minimum climb of 500' per NM to 640.

(CONTINUED ON FOLLOWING PAGE)

NOTE: Chart not to scale.



DEPARTURE ROUTE DESCRIPTION

TAKEOFF RUNWAY 6L: Climb heading 071° to intercept course 056° to CHVEZ, then on track 332° to cross JRGSN at or above 6300, then on track 315° to WNNDY, thence. . . .

TAKEOFF RUNWAY 6R: Climb heading 071° to intercept course 056° to KOFAX, then on track 333° to cross JRGSN at or above 6300, then on track 315° to WNNDY, thence. . . .

TAKEOFF RUNWAYS 7L/R: Climb heading 071° to 640, then on heading 071° or as assigned by ATC, for vectors to cross JRGSN at or above 6300, then on track 315° to WNNDY, thence. . . .

. . . .on (transition) maintain FL230. Expect filed altitude 5 minutes after departure.

LOST COMMUNICATIONS

If not in contact with departure control within 5 minutes after departure, turn left and proceed direct JRGSN WP, cross JRGSN at or below 7000. Climb to FL230 or filed altitude whichever is lower, and when able proceed direct filed or assigned route/fix/transition. Aircraft filing FL240 or above, climb to filed altitude ten minutes after departure.

COREZ TRANSITION (WNNDY3.COREZ)

CSTRO TRANSITION (WNNDY3.CSTRO)

SW-3, 16 APR 2026 to 14 MAY 2026

SW-3, 16 APR 2026 to 14 MAY 2026