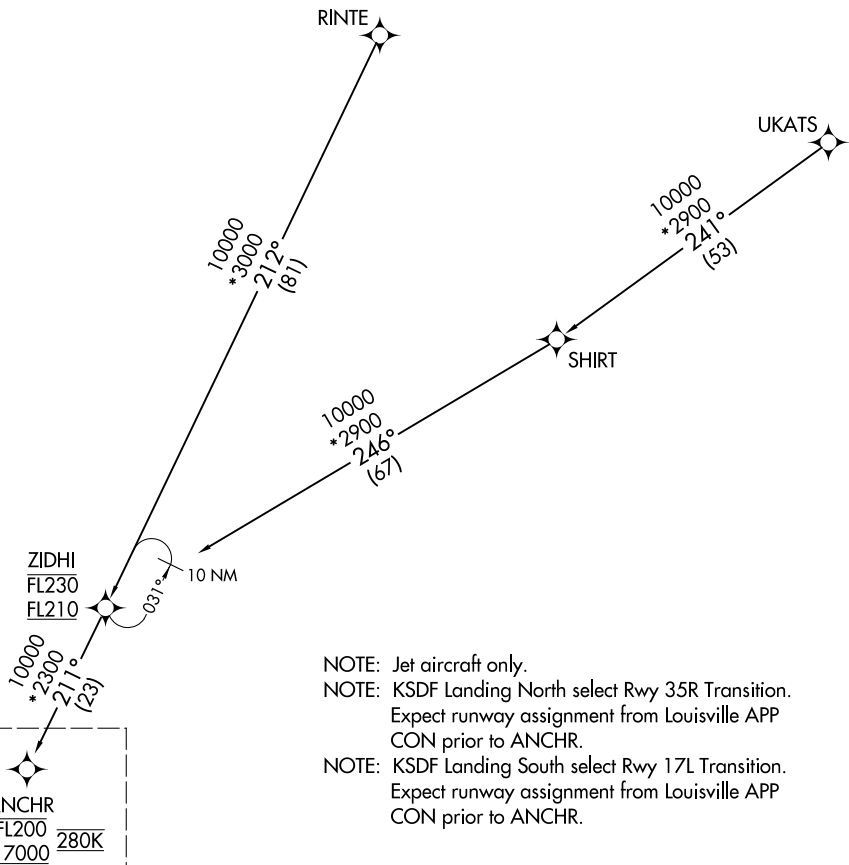


# DLAMP EIGHT ARRIVAL (RNAV) Transition Routes

LOUISVILLE APP CON  
132.075 327.0  
D-ATIS  
118.725

RNAV 1 - DME/DME/IRU or GPS.  
RADAR required.



- NOTE: Jet aircraft only.
- NOTE: KSDf Landing North select Rwy 35R Transition. Expect runway assignment from Louisville APP CON prior to ANCHR.
- NOTE: KSDf Landing South select Rwy 17L Transition. Expect runway assignment from Louisville APP CON prior to ANCHR.

See following page for Arrival Routes.

RINTE TRANSITION (RINTE.DLAMP8):  
UKATS TRANSITION (UKATS.DLAMP8):

NOTE: Chart not to scale.

(CONTINUED ON FOLLOWING PAGE)

# DLAMP EIGHT ARRIVAL (RNAV) Arrival Routes

LOUISVILLE APP CON  
132.075 327.0  
D-ATIS  
118.725

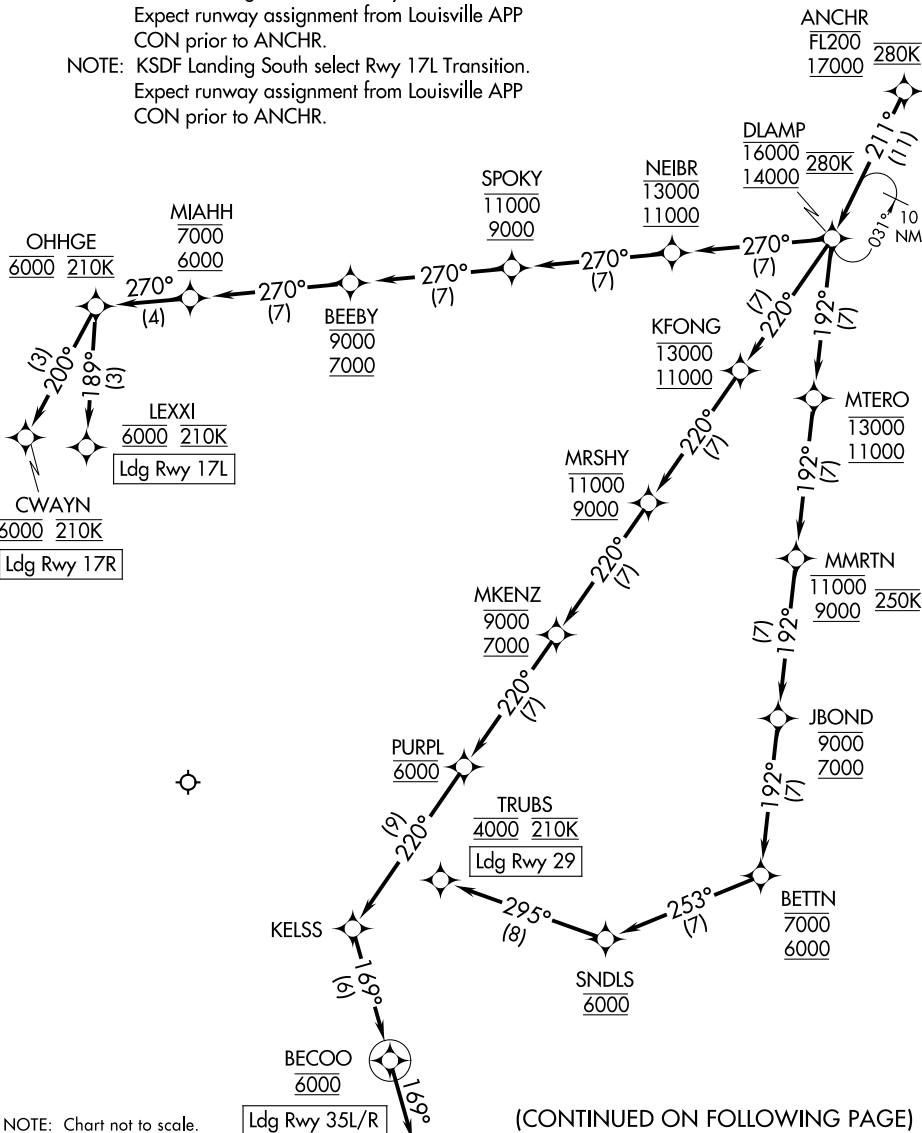
RNAV 1 - DME/DME/IRU or GPS.

RADAR required.

NOTE: Jet aircraft only.

NOTE: KSDF Landing North select Rwy 35R Transition.  
Expect runway assignment from Louisville APP  
CON prior to ANCHR.

NOTE: KSDF Landing South select Rwy 17L Transition.  
Expect runway assignment from Louisville APP  
CON prior to ANCHR.



SE-1, 16 APR 2026 to 14 MAY 2026

SE-1, 16 APR 2026 to 14 MAY 2026

NOTE: Chart not to scale.

(CONTINUED ON FOLLOWING PAGE)

# DLAMP EIGHT ARRIVAL (RNAV) Arrival Routes

# DLAMP EIGHT ARRIVAL (RNAV)

## ARRIVAL ROUTE DESCRIPTION

From ANCHR on track 211° to cross DLAMP between 14000 and 16000 and at 280K.

LANDING RUNWAY 17L: From DLAMP on track 270° to cross NEIBR between 11000 and 13000, then on track 270° to cross SPOKY between 9000 and 11000, then on track 270° to cross BEEBY between 7000 and 9000, then on track 270° to cross MIAHH between 6000 and 7000, then on track 270° to cross OHHGE at 6000 and at 210K, then on track 189° to cross LEXXI at 6000 and at 210K. Expect ILS or LOC Rwy 17L approach.

LANDING RUNWAY 17R: From DLAMP on track 270° to cross NEIBR between 11000 and 13000, then on track 270° to cross SPOKY between 9000 and 11000, then on track 270° to cross BEEBY between 7000 and 9000, then on track 270° to cross MIAHH between 6000 and 7000, then on track 270° to cross OHHGE at 6000 and at 210K, then on track 200° to cross CWAYN at 6000 and at 210K. Expect ILS or LOC Rwy 17R approach.

LANDING RUNWAY 29: From DLAMP on track 192° to cross MTERO between 11000 and 13000, then on track 192° to cross MMRTN between 9000 and 11000 and at 250K, then on track 192° to cross JBOND between 7000 and 9000, then on track 192° to cross BETTN between 6000 and 7000, then on track 253° to cross SNDLS at 6000, then on track 295° to cross TRUBS at 4000 and at 210K. Expect LOC Rwy 29 approach.

LANDING RUNWAYS 35L/R: From DLAMP on track 220° to cross KFONG between 11000 and 13000, then on track 220° to cross MRSHY between 9000 and 11000, then on track 220° to cross MKENZ between 7000 and 9000, then on track 220° to cross PURPL at 6000, then on track 220° to KELSS, then on track 169° to cross BECOO at 6000, then on track 169°. Expect radar vectors to final approach course.

SE-1, 16 APR 2026 to 14 MAY 2026

SE-1, 16 APR 2026 to 14 MAY 2026