

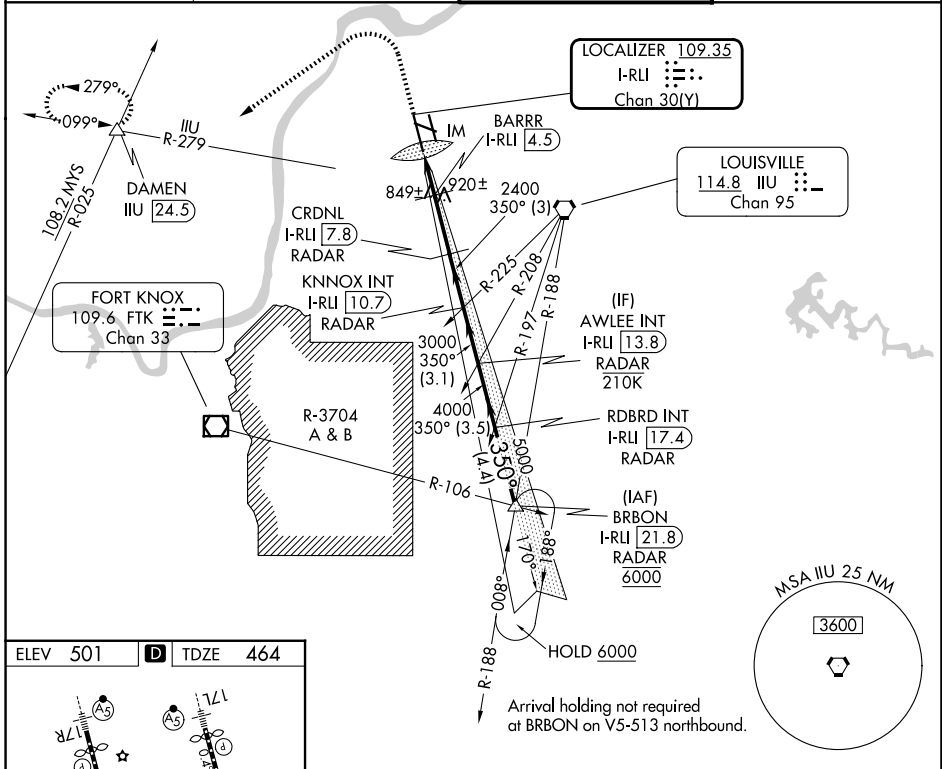
LOC/DME I-RLI 109.35	APP CRS 350°	Rwy Ldg TDZE 10000 464
Chan 30 (Y)		Apt Elev 501

ILS or LOC RWY 35L

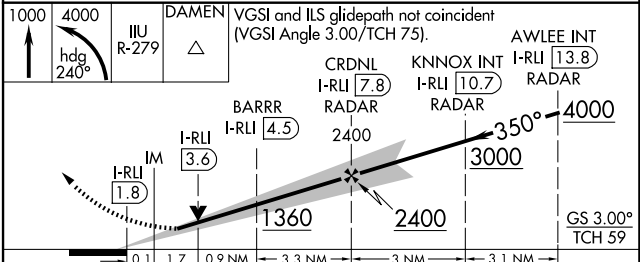
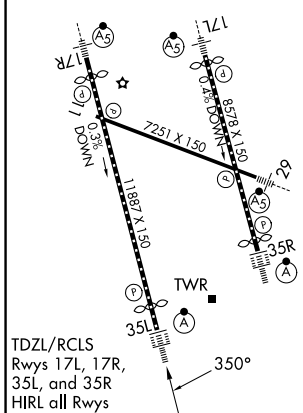
LOUISVILLE MUHAMMAD ALI INTL (SDF)

DME required for LOC only. RADAR required.	ALSf-2 	MISSED APPROACH: Climb to 1000 then climbing left turn to 4000 on heading 240° and IJU VORTAC R-279 to DAMEN INT/ IJU 24.5 DME and hold.
Simultaneous approach authorized. Circling Rwy 11 NA at night. For inop ALS, increase S-LOC 35L Cat C/D visibility to 1 3/4 SM.		

D-ATIS 118.725	LOUISVILLE APP CON 132.075 327.0	LOUISVILLE TOWER 124.2 257.8	GND CON 121.7 348.6
--------------------------	--	--	-------------------------------



ELEV 501	D	TDZE 464
----------	----------	----------



CATEGORY	0.1	1.7	0.9 NM	3.3 NM	3 NM	C	3.1 NM	D
S-ILS 35L	664/18 200 (200-1/2)							
S-LOC 35L	1100/24	636 (600-1/2)	1100-1 3/4	636 (600-1 3/4)				
CIRCLING	1100-1 599 (600-1)	1140-1 639 (700-1)	1160-1 3/4 659 (700-1 3/4)	1400-3 899 (900-3)				

SE-1, 16 APR 2026 to 14 MAY 2026

SE-1, 16 APR 2026 to 14 MAY 2026