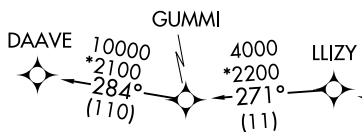


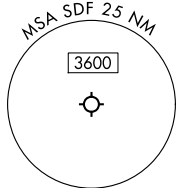
RNAV 1 - DME/DME/IRU or GPS.
RADAR required for non-GPS equipped aircraft.

**TOP ALTITUDE:
13000**

LOUISVILLE DEP CON
132.075 327.0
D-ATIS 118.725
CLNC DEL
126.1 275.8
CPDLC
GND CON
121.7 348.6
LOUISVILLE TOWER
124.2 257.8



TAKEOFF MINIMUMS:
Rwys 17L/R, 29, 35L/R: Standard with
minimum climb of 500'/NM to 1020.



(CONTINUED ON FOLLOWING PAGE)

NOTE: Chart not to scale.

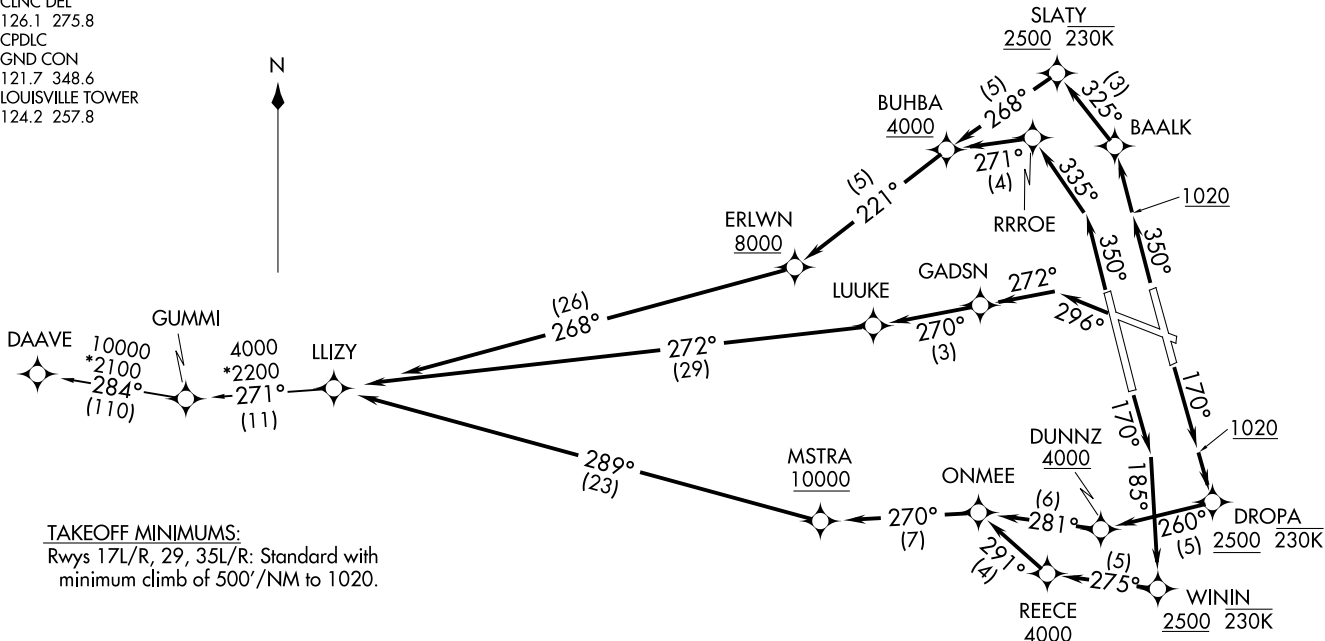
LLIZY ONE DEPARTURE (RNAV)
(LLIZY1, LLIZY) 11 JUN 24

LOUISVILLE MUHAMMAD ALI INTL (SDF)
LOUISVILLE, KENTUCKY

(LLIZY1, LLIZY) 24221

AL-239 (FAA)

LOUISVILLE MUHAMMAD ALI INTL (SDF)
LOUISVILLE, KENTUCKY





DEPARTURE ROUTE DESCRIPTION

TAKEOFF RUNWAY 17L: Climb on heading 170° to 1020, then direct DROPA at or above 2500 at or below 230K, then on track 260° to cross DUNNZ at or above 4000, then on track 281° to ONMEE, then on track 270° to cross MSTR A at or above 10000, then on track 289° to LLIZY, thence ...

TAKEOFF RUNWAY 17R: Climb on heading 170° to intercept course 185° to cross WININ at or above 2500 and at or below 230K, then on track 275° to cross REECE at or above 4000, then on track 291° to ONMEE, then on track 270° to cross MSTR A at or above 10000, then on track 289° to LLIZY, thence ...

TAKEOFF RUNWAY 29: Climb on heading 296° to intercept course 272° to GADSN, then on track 270° to LUUKE, then on track 272° to LLIZY, thence ...

TAKEOFF RUNWAY 35L: Climb on heading 350° to intercept course 335° to RRROE, then on track 271° to cross BUHBA at or above 4000, then on track 221° to cross ERLWN at or above 8000, then on track 268° to LLIZY, thence ...

TAKEOFF RUNWAY 35R: Climb on heading 350° to 1020, then direct BAALK, then on track 325° to cross SLATY at or above 2500 and at or below 230K, then on track 268° to cross BUHBA at or above 4000, then on track 221° to cross ERLWN at or above 8000, then on track 268° to LLIZY, thence ...

. . . . then on transition. Maintain 13000. Expect filed altitude 10 minutes after departure.

DAAVE TRANSITION (LLIZY1.DAAVE)

SE-1, 16 APR 2026 to 14 MAY 2026

SE-1, 16 APR 2026 to 14 MAY 2026