

(LOKRD1.LOKRD) 24193

AL-239 (FAA)

LOUISVILLE MUHAMMAD ALI INTL (SDF)

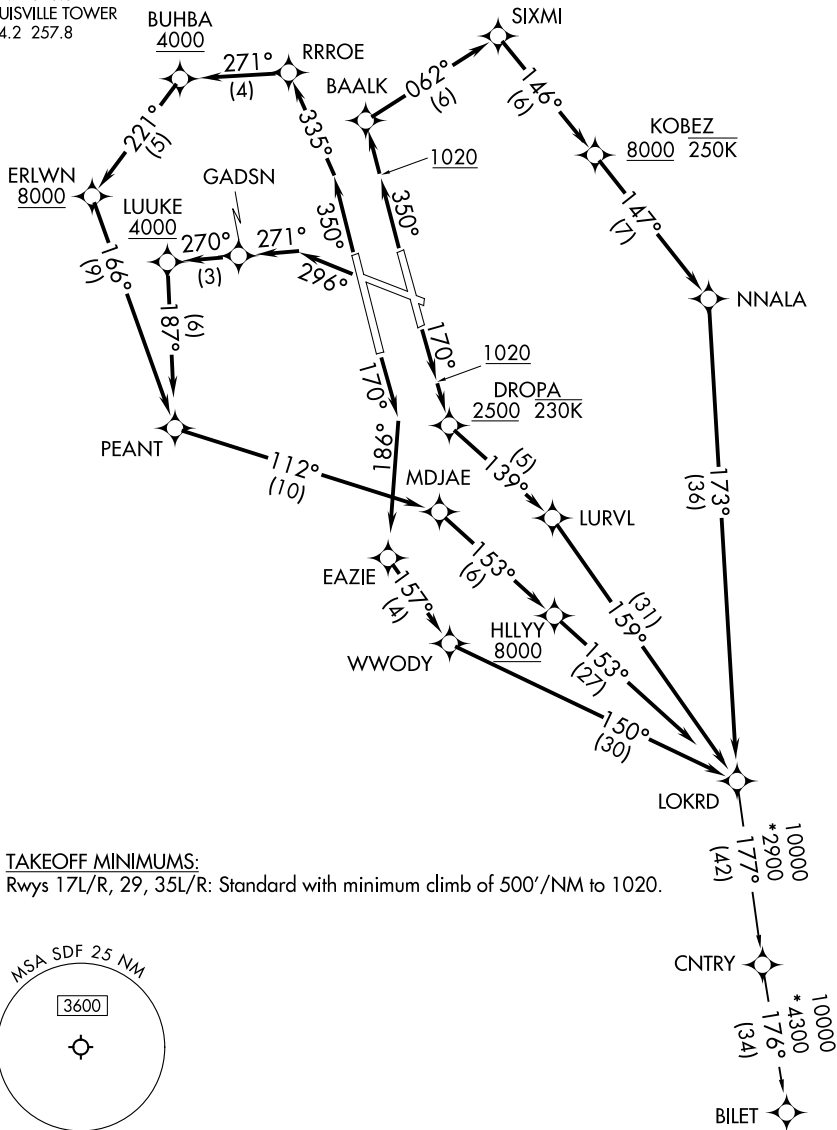
# LOKRD ONE DEPARTURE (RNAV)

LOUISVILLE, KENTUCKY

LOUISVILLE DEP CON  
 132.075 327.0  
 D-ATIS 118.725  
 CLNC DEL  
 126.1 275.8  
 CPDLC  
 GND CON  
 121.7 348.6  
 LOUISVILLE TOWER  
 124.2 257.8

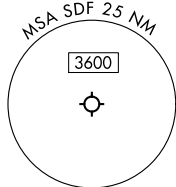
RNAV 1 - DME/DME/IRU or GPS.  
 RADAR required for non-GPS equipped aircraft.

**TOP ALTITUDE:  
 13000**



**TAKEOFF MINIMUMS:**

Rwys 17L/R, 29, 35L/R: Standard with minimum climb of 500'/NM to 1020.



(CONTINUED ON FOLLOWING PAGE)

NOTE: Chart not to scale.

# LOKRD ONE DEPARTURE (RNAV)

(LOKRD1.LOKRD) 11JUL24

LOUISVILLE, KENTUCKY

LOUISVILLE MUHAMMAD ALI INTL (SDF)

SE-1, 16 APR 2026 to 14 MAY 2026

SE-1, 16 APR 2026 to 14 MAY 2026



DEPARTURE ROUTE DESCRIPTION

TAKEOFF RUNWAY 17L: Climb on heading 170° to 1020, then direct DROPA at or above 2500 and at or below 230K, then on track 139° to LURVL, then on track 159° to LOKRD, thence ...

TAKEOFF RUNWAY 17R: Climb on heading 170° to intercept course 186° to EAZIE, then on track 157° to WWODY, then on track 150° to LOKRD, thence ...

TAKEOFF RUNWAY 29: Climb on heading 296° to intercept course 271° to GADSN, then on track 270° to cross LUUKE at or above 4000, then on track 187° to PEANT, then on track 112° to MDJAE, then on track 153° to cross HLLYY at or above 8000, then on track 153° to LOKRD, thence ...

TAKEOFF RUNWAY 35L: Climb on heading 350° to intercept course 335° to RRROE, then on track 271° to cross BUHBA at or above 4000, then on track 221° to cross ERLWN at or above 8000, then on track 166° to PEANT, then on track 112° to MDJAE, then on track 153° to cross HLLYY at or above 8000, then on track 153° to LOKRD, thence ...

TAKEOFF RUNWAY 35R: Climb on heading 350° to 1020, then direct BAALK, then on track 062° to SIXMI, then on track 146° to cross KOBZ at or above 8000 and at or below 250K, then on track 147° to NNALA, then on track 173° to LOKRD, thence ...

... then on transition. Maintain 13000. Expect filed altitude 10 minutes after departure.

BILET TRANSITION (LOKRD1.BILET):

SE-1, 16 APR 2026 to 14 MAY 2026

SE-1, 16 APR 2026 to 14 MAY 2026