

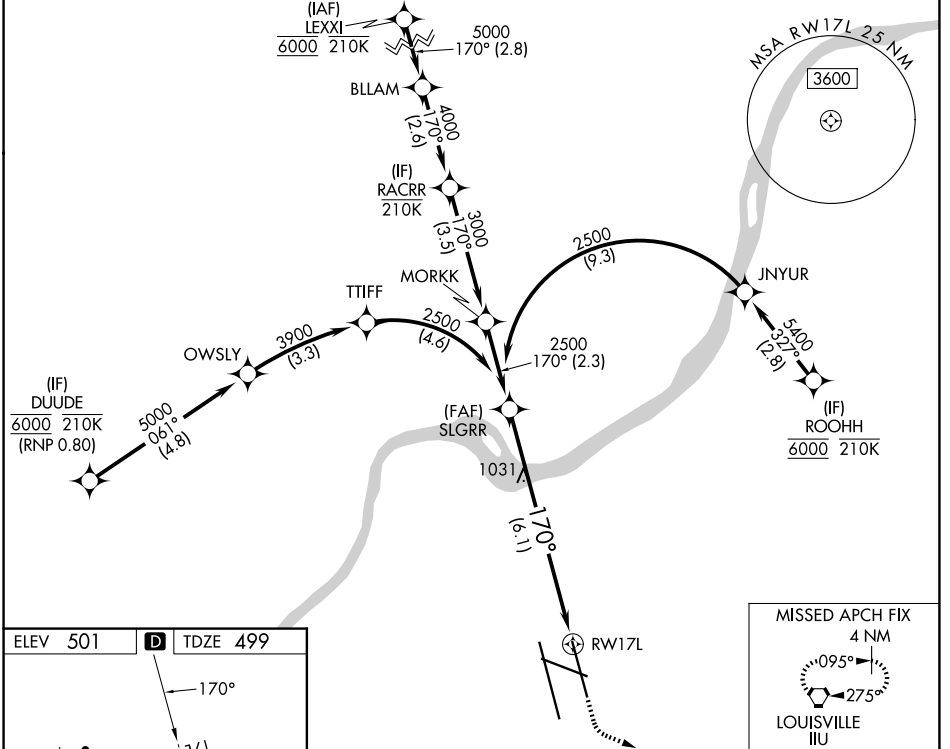
# RNAV (RNP) Z RWY 17L

LOUISVILLE MUHAMMAD ALI INTL (SDF)

APP CRS	Rwy Ldg	<b>7800</b>
<b>170°</b>	TDZE	<b>499</b>
	Apt Elev	<b>501</b>

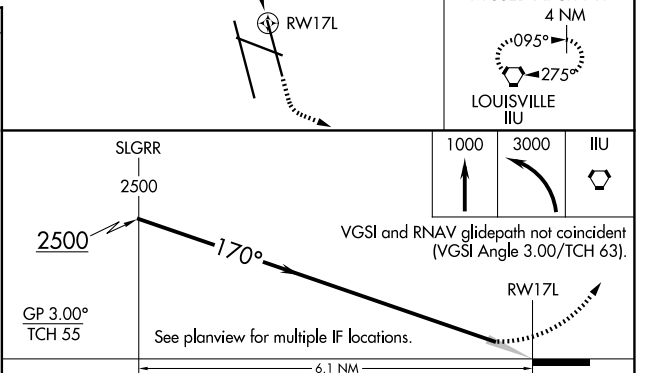
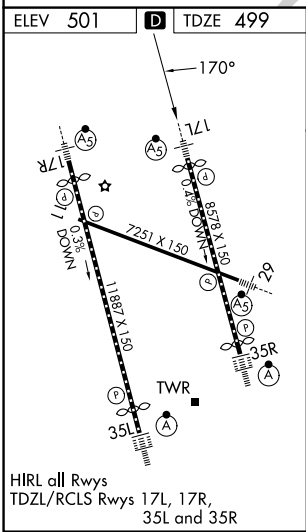
RNP AR APCH - GPS.	MALSR	MISSED APPROACH: Climb to 1000 then climbing left turn to 3000 direct IIL VORTAC and hold, continue climb-in-hold to 3000.
<p>▼ For uncompensated Baro-VNAV systems, procedure NA below -13°C or above 54°C. Simultaneous approach authorized.</p>		

D-ATIS <b>118.725</b>	LOUISVILLE APP CON <b>132.075 327.0</b>	LOUISVILLE TOWER <b>124.2 257.8</b>	GND CON <b>121.7 348.6</b>
--------------------------	--	--	-------------------------------



SE-1, 16 APR 2026 to 14 MAY 2026

SE-1, 16 APR 2026 to 14 MAY 2026



ELEV 501	<b>D</b>	TDZE 499		
GP 3.00°	TCH 55			
CATEGORY	A	B	C	D
RNP 0.30 DA	936/40		437 (500-3/4)	

HIRL all Rwys  
TDZL/RCLS Rwys 17L, 17R,  
35L and 35R