


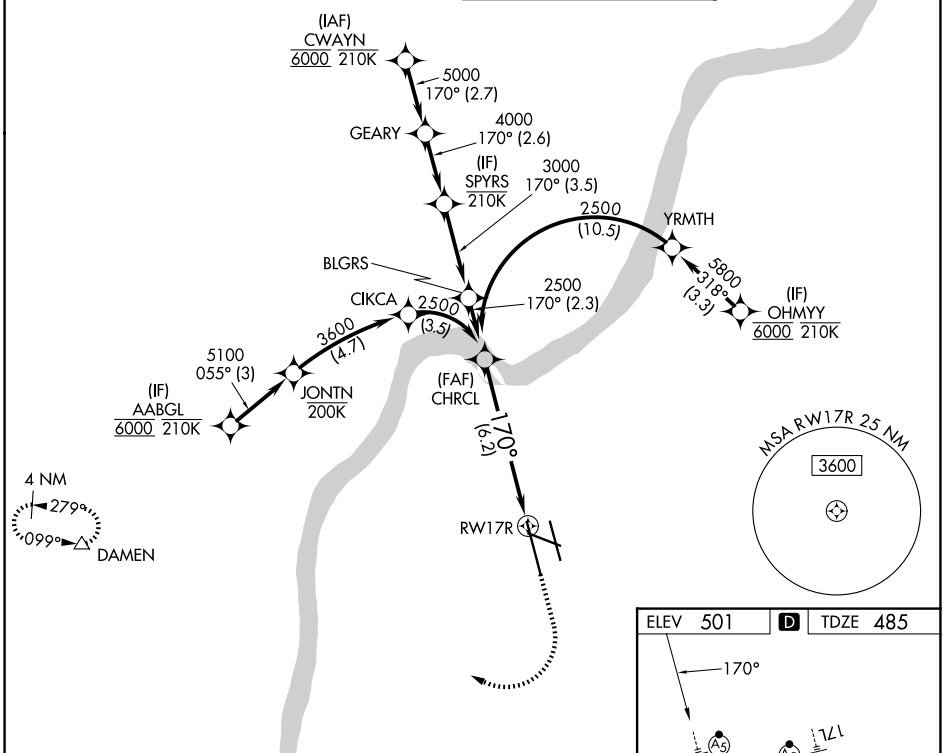
APP CRS	Rwy Ldg	<b>10000</b>
<b>170°</b>	TDZE	<b>485</b>
	Apt Elev	<b>501</b>

# RNAV (RNP) Z RWY 17R

LOUISVILLE MUHAMMAD ALI INTL (SDF)

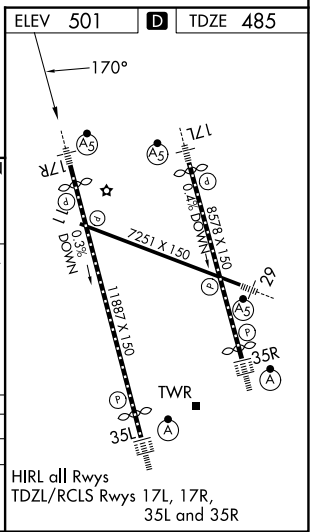
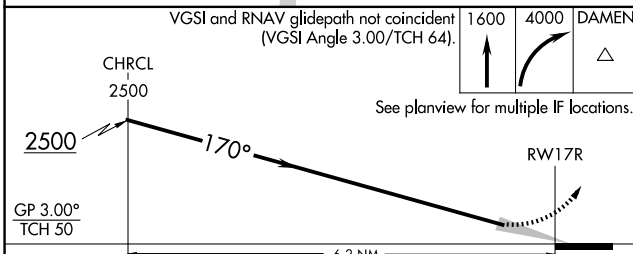
RNP AR APCH - GPS.	MALSR 	MISSED APPROACH: Climb to 1600 then climbing right turn to 4000 direct DAMEN and hold.
<p>▼ For uncompensated Baro-VNAV systems, procedure NA below -13°C or above 54°C. Simultaneous approach authorized. For inop ALS, increase RNP 0.30 visibility all Cats to 1½ SM.</p>		

D-ATIS <b>118.725</b>	LOUISVILLE APP CON <b>132.075 327.0</b>	LOUISVILLE TOWER <b>124.2 257.8</b>	GND CON <b>121.7 348.6</b>
--------------------------	--	--	-------------------------------



SE-1, 16 APR 2026 to 14 MAY 2026

SE-1, 16 APR 2026 to 14 MAY 2026



CATEGORY	A	B	C	D
RNP 0.30 DA	974/50 489 (500-1)			
<b>AUTHORIZATION REQUIRED</b>				