

RNAV (RNP) Z RWY 35L

LOUISVILLE MUHAMMAD ALI INTL (SDF)

APP CRS	Rwy Ldg	10000
350°	TDZE	464
	Apt Elev	501

RNP AR APCH - GPS.



For uncompensated Baro-VNAV systems, procedure NA below -10°C or above 54°C. Simultaneous approach authorized. For inop ALS, increase RNP 0.11 all Cats visibility to RVR 4500.

ALSF-2



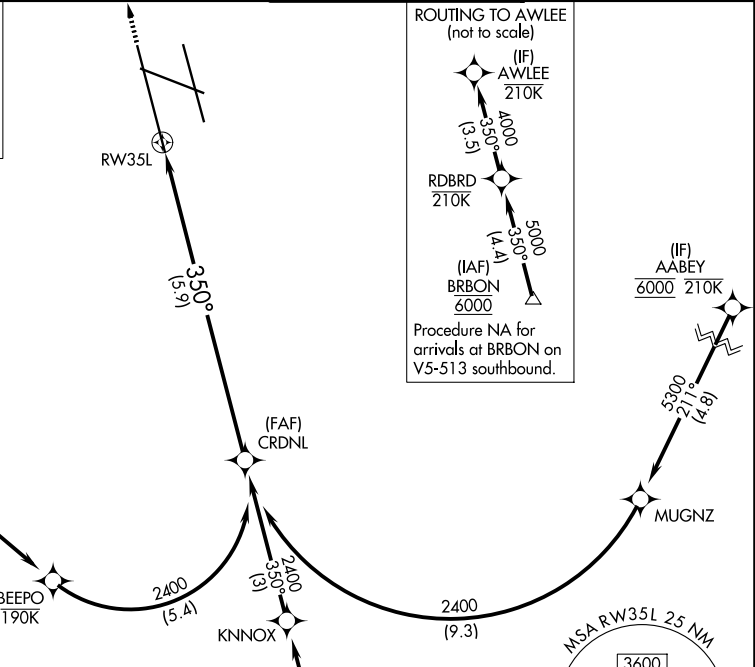
MISSED APPROACH: Climb to 1000 then climbing left turn to 4000 direct DAMEN and hold.

D-ATIS 118.725	LOUISVILLE APP CON 132.075 327.0	LOUISVILLE TOWER 124.2 257.8	GND CON 121.7 348.6
--------------------------	--	--	-------------------------------

MISSED APCH FIX

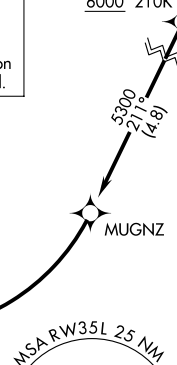
4 NM

DAMEN

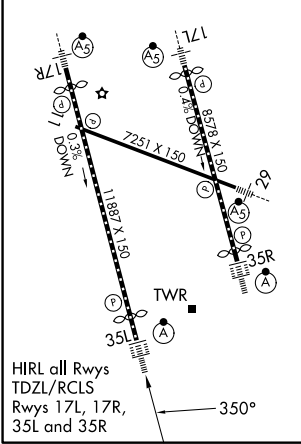


ROUTING TO AWLEE (not to scale)

Procedure NA for arrivals at BRBON on V5-513 southbound.



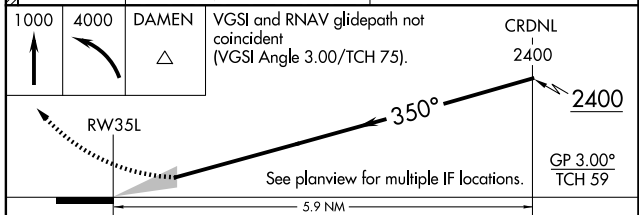
ELEV 501	D	TDZE 464
----------	----------	----------



R-3704 A & B

(IF) AWLEE 210K SEE INSET FOR ROUTING TO AWLEE

VGSI and RNAV glidepath not coincident (VGSI Angle 3.00/TCH 75).



CATEGORY	A	B	C	D
RNP 0.11 DA		769/24	305 (300-½)	
RNP 0.30 DA		897/40	433 (400-¾)	

AUTHORIZATION REQUIRED

SE-1, 16 APR 2026 to 14 MAY 2026

SE-1, 16 APR 2026 to 14 MAY 2026