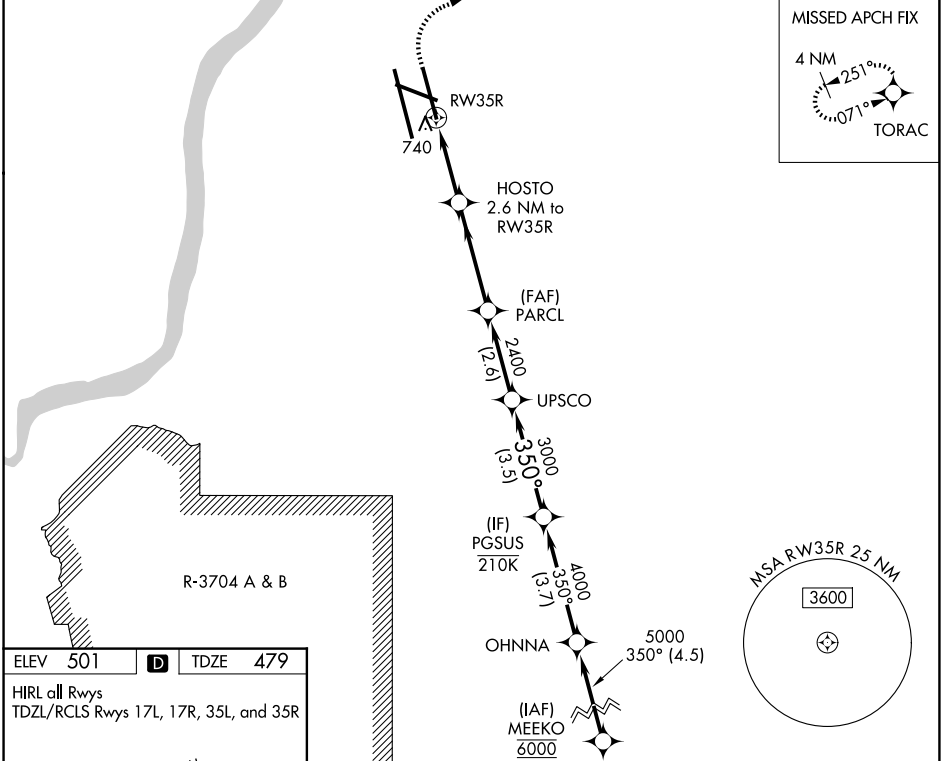


WAAS CH 70709 W35D	APP CRS 350°	Rwy Ldg TDZE Apt Elev	7800 479 501
--	------------------------	-----------------------------	---

RNAV (GPS) Y RWY 35R

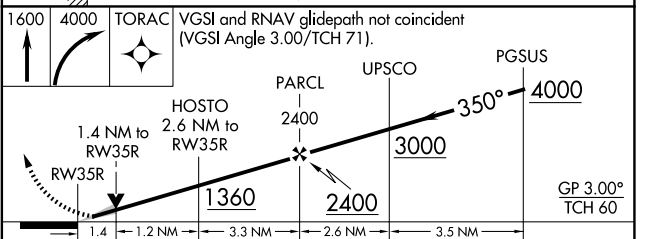
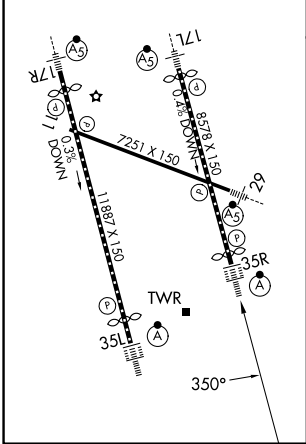
LOUISVILLE MUHAMMAD ALI INTL (SDF)

RNP APCH - GPS.		ALSF-2		MISSED APPROACH: Climb to 1600 then climbing right turn to 4000 direct TORAC and hold.
Simultaneous approach authorized. LNAV procedure NA during simultaneous operations. Use of FD or AP required during simultaneous operations. Circling Rwy 11 NA at night. For uncompensated Baro-VNAV systems, LNAV/VNAV NA below -13°C or above 54°C.		(A) (B) (C) (D)		
D-ATIS 118.725	LOUISVILLE APP CON 132.075 327.0	LOUISVILLE TOWER 124.2 257.8	GND CON 121.7 348.6	



ELEV 501	D	TDZE 479
----------	----------	----------

HIRL all Rwys
TDZL/RCLS Rwys 17L, 17R, 35L, and 35R



CATEGORY	A	B	C	D
LPV DA		679/18	200 (200-1/2)	
LNAV/VNAV DA		901/40	422 (400-3/4)	
LNAV MDA	1000/24	521 (500-1/2)	1000/55	521 (500-1)
CIRCLING	1040-1 539 (600-1)	1140-1 639 (700-1)	1160-1 3/4 659 (700-1 3/4)	1400-3 899 (900-3)

SE-1, 16 APR 2026 to 14 MAY 2026

SE-1, 16 APR 2026 to 14 MAY 2026