

HI-VOR or TACAN Z RWY 26

VORTAC LBB 109.2 Chan 29	APCH CRS 282°	Rwy Idg TDZE Arpt Elev 8002 3256 3282
--	-------------------------	---

[USAF]

LUBBOCK PRESTON SMITH INTL (KLBB)

DME required. RADAR required for entry at CIRKI.



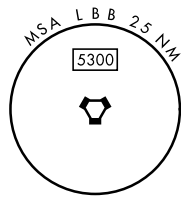
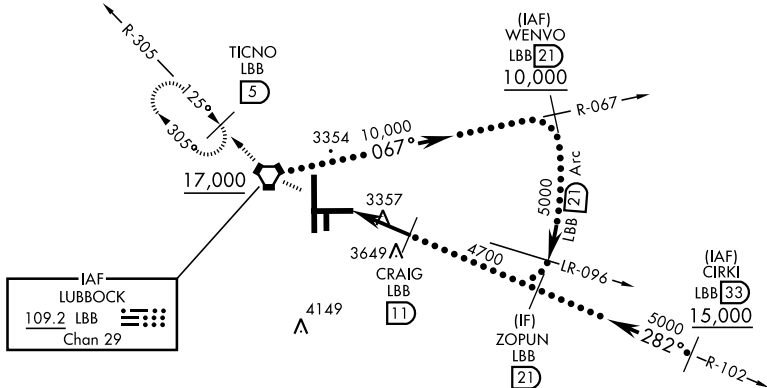
MISSED APPROACH: Climb and maintain 5100 direct LBB VORTAC and via LBB R-305 to TICNO (LBB 5 DME) and hold.

* When ALS inop, increase CAT E vis to 1¼.

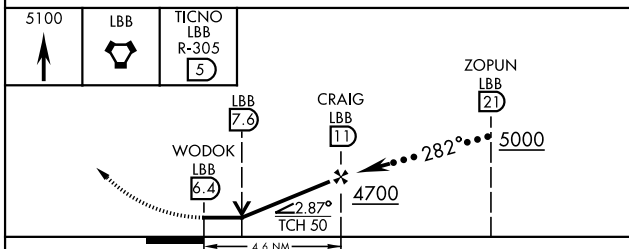
ATIS 125.3 270.275	APP CON 119.2 351.8	TOWER 120.5 239.3	GND CON 121.9 348.6	CLNC DEL 125.8 281.55
------------------------------	-------------------------------	-----------------------------	-------------------------------	---------------------------------

Procedure NA for arrival on LBB VORTAC airway R-052 CW R-114.

3737

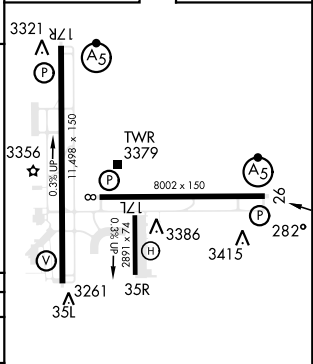


EMERG SAFE ALT 100 NM 7300



CATEGORY	C	D	E
S-26*	3680/40	424	(400-¾)
CIRCLING	3880-1½ 598 (600-1½)	3940-2 658 (700-2)	4100-3 818 (900-3)

ELEV	3282	TDZE	3256
------	------	------	------



HIRL Rwy 8-26, 17R-35L
REIL Rwy 8

HI-VOR or TACAN Z RWY 26

SC-2, 16 APR 2026 to 14 MAY 2026

SC-2, 16 APR 2026 to 14 MAY 2026