


LOC/DME I-LBB 111.7 Chan 54	APP CRS 174°	Rwy Ldg 11500 TDZE 3282 Apt Elev 3282
---	------------------------	--

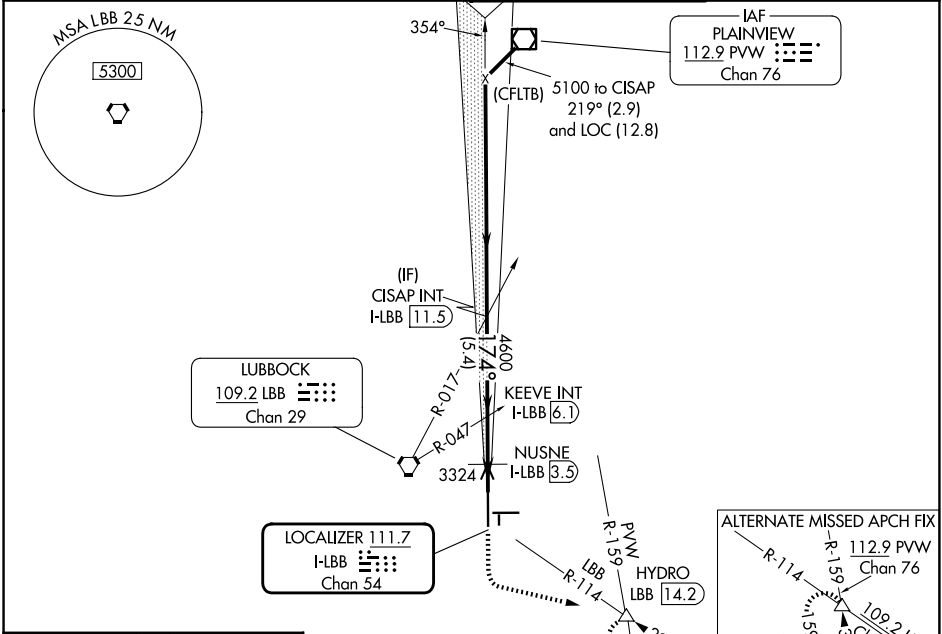
ILS or LOC RWY 17R

LUBBOCK PRESTON SMITH INTL (LBB)

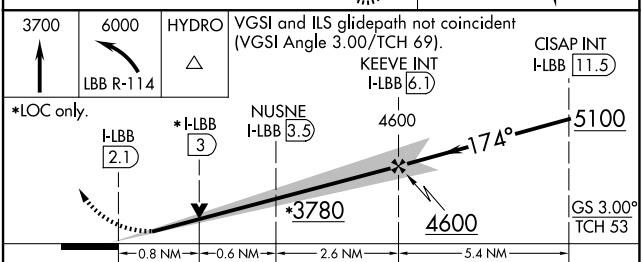
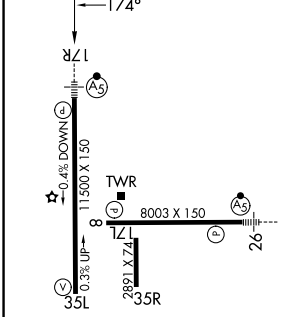
⚠ For inop MALSR, increase S-ILS 17R Cat E visibility to RVR 4000, S-LOC 17R Cat C/D/E visibility to 1½ mile, and NUSNE DME Fix Minimums, increase S-LOC 17R Cat C/D/E visibility to RVR 5000.
#RVR 1800 authorized with the use of FD or AP or HUD to DA.

MALSR  MISSED APPROACH: Climb to 3700 then climbing left turn to 6000 via LBB VORTAC R-114 to HYDRO INT/LBB 14.2 DME and hold, continue climb-in-hold to 6000.

ATIS 125.3 270.275	LUBBOCK APP CON 119.2 351.8	LUBBOCK TOWER 120.5 239.3	GND CON 121.9 348.6
------------------------------	---------------------------------------	-------------------------------------	-------------------------------



ELEV 3282	D	TDZE 3282
-----------	----------	-----------



CATEGORY	A	B	C	D	E
S-ILS 17R	#3482/24 200 (200-½)				
S-LOC 17R	3780/24	498 (500-½)	3780/50		498 (500-1)
CIRCLING	3780-1	498 (500-1)	3880-1½ 598 (600-1½)	3940-2 658 (700-2)	4100-3 818 (900-3)
NUSNE FIX MINIMUMS (DME REQUIRED)					
S-LOC 17R	3620/24	338 (400-½)	3620/26		338 (400-½)
CIRCLING	3720-1 438 (500-1)	3740-1 458 (500-1)	3880-1½ 598 (600-1½)	3940-2 658 (700-2)	4100-3 818 (900-3)

REIL Rwy 8
HIRL Rwy 8-26 and 17R-35L

FAF to MAP 4 NM					
Knots	60	90	120	150	180
Min:Sec	4:00	2:40	2:00	1:36	1:20

LUBBOCK, TEXAS
Amdt 18 05JAN17

LUBBOCK PRESTON SMITH INTL (LBB)
ILS or LOC RWY 17R

33°40'N-101°49'W

SC-2, 16 APR 2026 to 14 MAY 2026

SC-2, 16 APR 2026 to 14 MAY 2026