

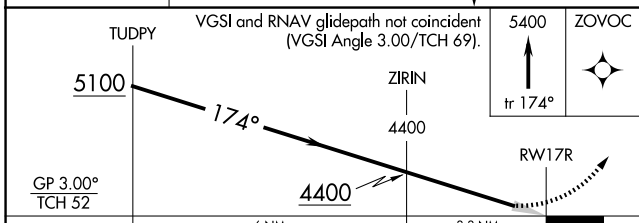
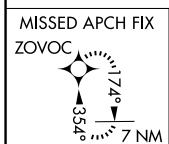
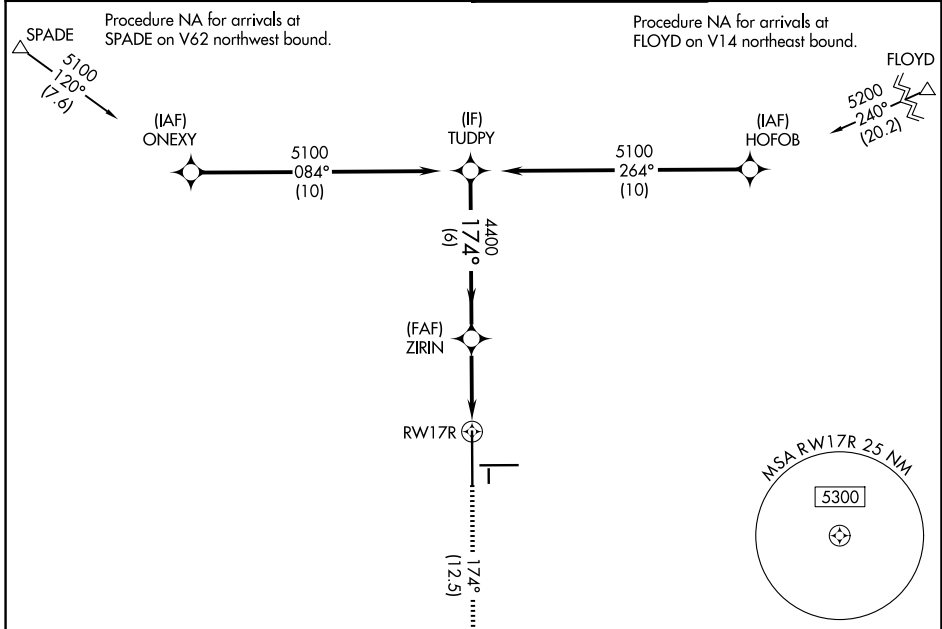
APP CRS <b>174°</b>	Rwy Ldg <b>11500</b> TDZE <b>3282</b> Apt Elev <b>3282</b>
------------------------	--

# RNAV (RNP) Z RWY 17R

LUBBOCK PRESTON SMITH INTL (LBB)

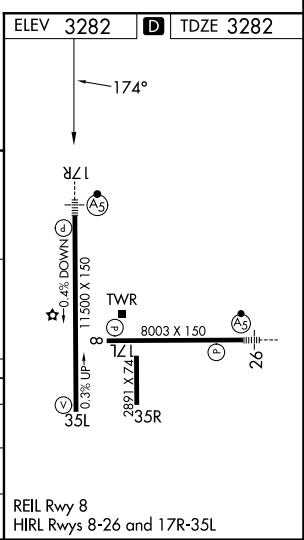
RNP AR APCH - GPS, min RNP 0.50. Authorization required.		MALSR	MISSED APPROACH: Climb to 5400 on 174° track to ZOVOC and hold.
<p>▼ For uncompensated Baro-VNAV systems, procedure NA below -11°C or above 54°C. For inop ALS, increase RNP 0.16 all Cats visibility to RVR 4500 and increase RNP 0.30 all Cats visibility to RVR 5500.</p>			

ATIS <b>125.3 270.275</b>	LUBBOCK APP CON <b>119.2 351.8</b>	LUBBOCK TOWER <b>120.5 239.3</b>	GND CON <b>121.9 348.6</b>
------------------------------	---------------------------------------	-------------------------------------	-------------------------------



CATEGORY	A	B	C	D
RNP 0.16 DA		3570/24	288 (300-½)	
RNP 0.30 DA		3641/30	359 (400-¾)	

**AUTHORIZATION REQUIRED**



SC-2, 16 APR 2026 to 14 MAY 2026

SC-2, 16 APR 2026 to 14 MAY 2026