

RNAV (RNP) Z RWY 35L

LUBBOCK PRESTON SMITH INTL (LBB)

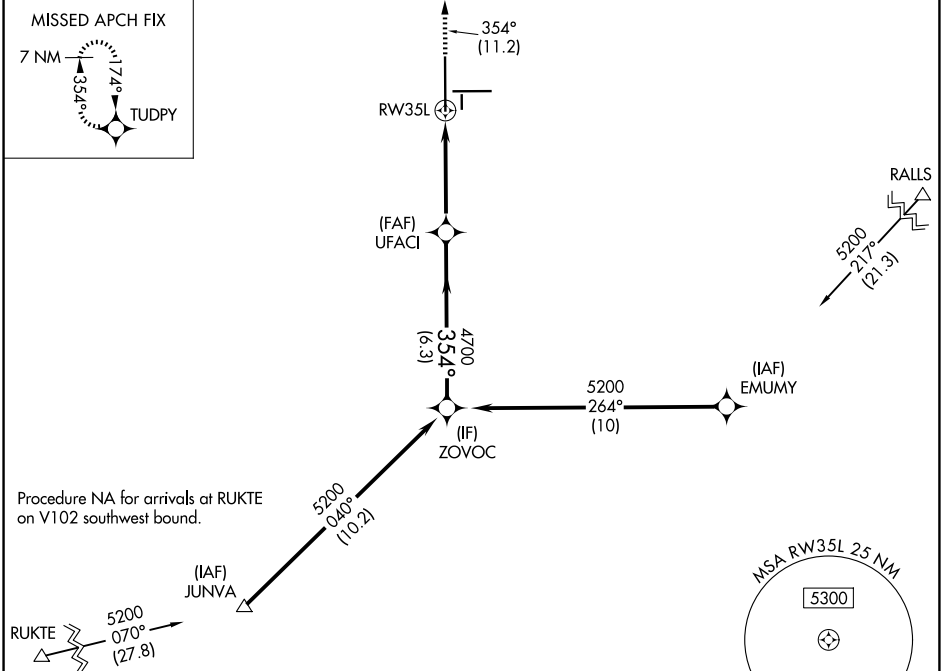
APP CRS 354°	Rwy Ldg TDZE Apt Elev	11500 3254 3282
------------------------	-----------------------------	--

RNP AR APCH.

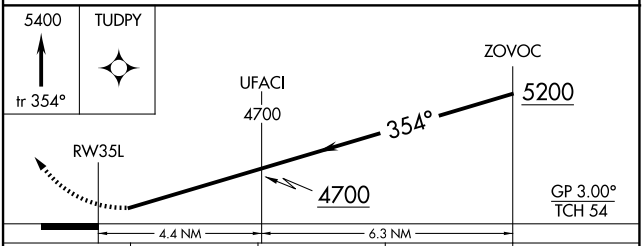
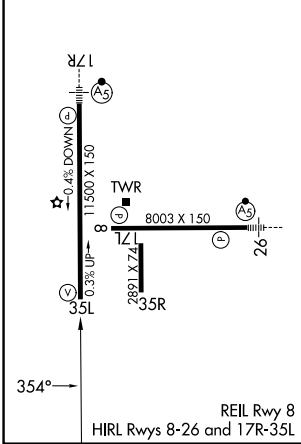
▼ For uncompensated Baro-VNAV systems, procedure NA below -12° C or above 51° C.

MISSED APPROACH: Climb to 5400 on track 354° to TUDPY and hold.

ATIS 125.3 270.275	LUBBOCK APP CON 119.2 351.8	LUBBOCK TOWER 120.5 239.3	GND CON 121.9 348.6
------------------------------	---------------------------------------	-------------------------------------	-------------------------------



ELEV 3282 **D** TDZE 3254



CATEGORY	A	B	C	D
RNP 0.18 DA		3559-7/8	305 (300-7%)	
RNP 0.30 DA		3620-1 1/8	366 (400-1 1/8)	

AUTHORIZATION REQUIRED

SC-2, 16 APR 2026 to 14 MAY 2026

SC-2, 16 APR 2026 to 14 MAY 2026