

LOC I-MCN	APP CRS	Rwy Ldg	<b>6221</b>
<b>109.5</b>	<b>054°</b>	TDZE	<b>344</b>
		Apt Elev	<b>354</b>

# ILS RWY 5 (SA CAT I & II)

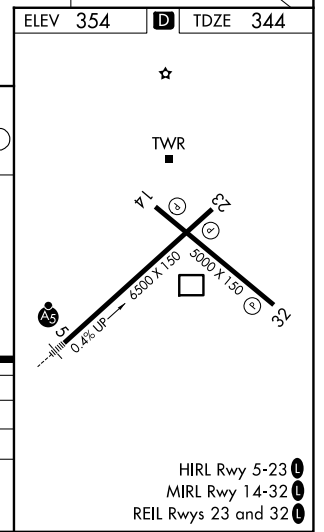
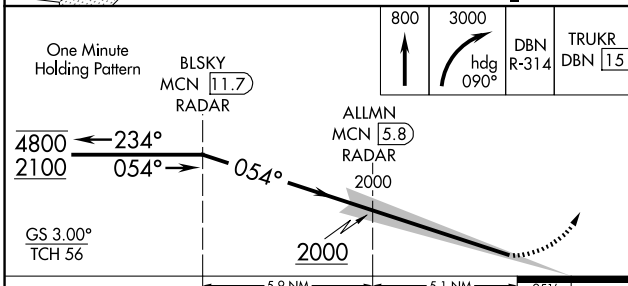
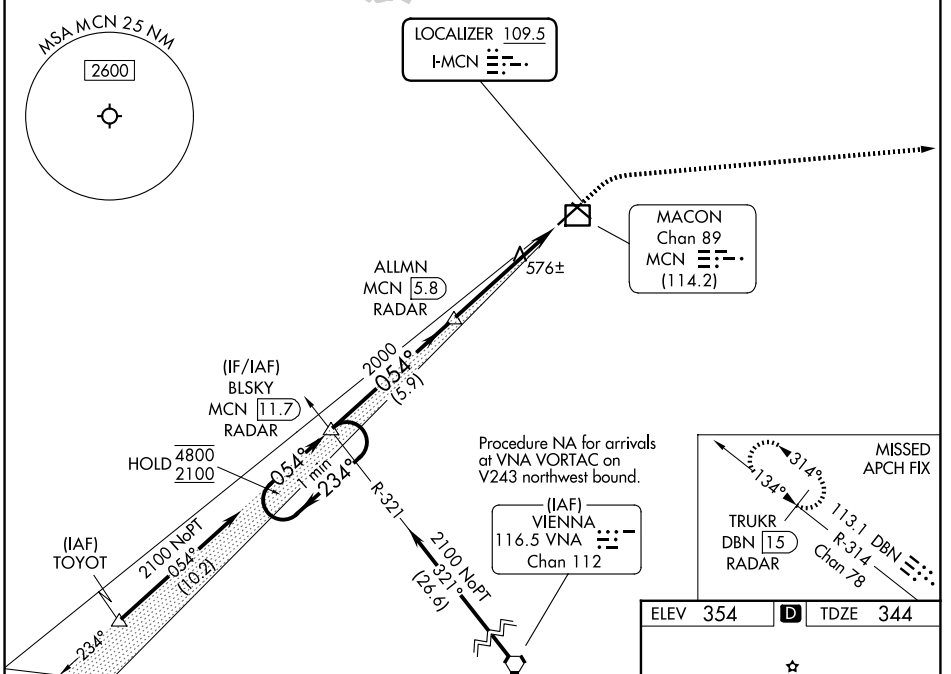
MIDDLE GEORGIA RGNL (MCN)

DME and RADAR required.

**MAJORS**

MISSED APPROACH: Climb to 800 then climbing right turn to 3000 on heading 090° and DBN VORTAC R-314 to TRUKR/DBN VORTAC 15 DME/RADAR and hold.

ATIS	ATLANTA APP CON *	MACON TOWER *	GND CON	UNICOM
<b>120.775</b>	<b>124.2 279.6</b>	<b>128.2 (CTAF) 257.8</b>	<b>121.65</b>	<b>122.95</b>



CATEGORY	A	B	C	D
S-ILS 5	SA CAT I	RA 216/14	150 DA 494	
S-ILS 5	SA CAT II	RA 151/12	100 DA 444	

**SA CATEGORY I & II ILS - SPECIAL AIRCREW & AIRCRAFT CERTIFICATION REQUIRED**

SE-4, 16 APR 2026 to 14 MAY 2026

SE-4, 16 APR 2026 to 14 MAY 2026