

ILS or LOC RWY 5

MIDDLE GEORGIA RGNL (MCN)

LOC I-MCN	APP CRS	Rwy Ldg	6221
109.5	054°	TDZE	344
		Apt Elev	354

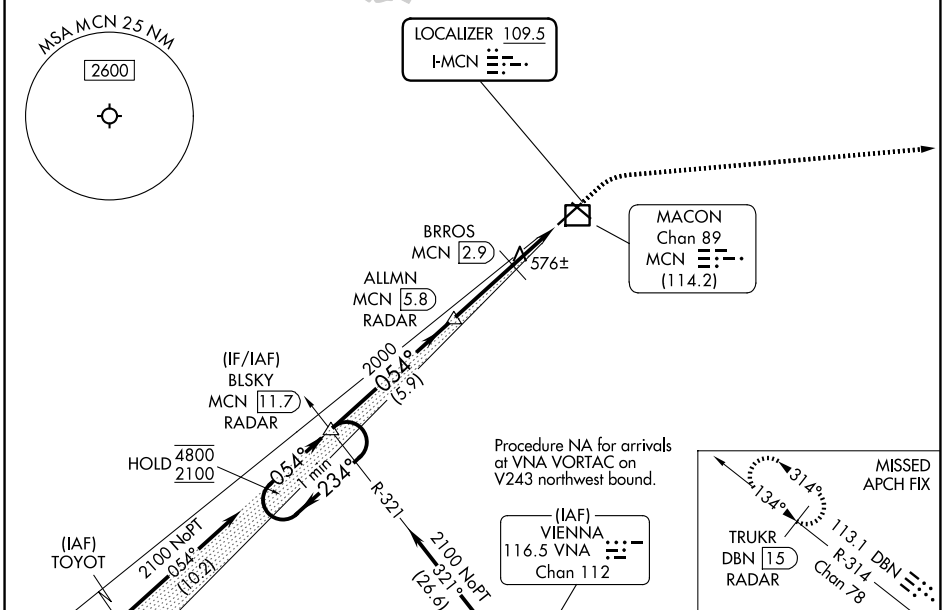
DME and RADAR required.

⚠ DME from MCN VORTAC. Simultaneous reception of I-MCN and MCN DME required. For inop ALS, increase S-ILS 5 Cat E visibility to RVR 4000 and S-LOC 5 Cats C, D, and E visibilities to 1 3/8 SM.
 * RVR 1800 authorized with use of FD or AP or HUD to DA.

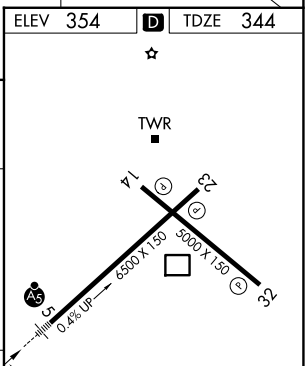
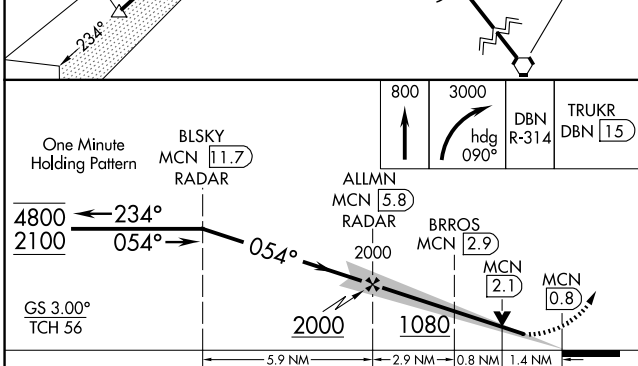
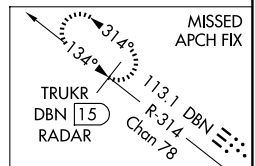
MALS R

MISSED APPROACH: Climb to 800 then climbing right turn to 3000 on heading 090° and DBN VORTAC R-314 to TRUKR/DBN VORTAC 15 DME/RADAR and hold.

ATIS	ATLANTA APP CON *	MACON TOWER *	GND CON	UNICOM
120.775	124.2 279.6	128.2 (CTAF) 257.8	121.65	122.95



Procedure NA for arrivals at VNA VORTAC on V243 northwest bound.



CATEGORY	A	B	C	D	E
S-ILS 5 *	544/24 200 (200-1/2)				
S-LOC 5	840/24	496 (500-1/2)	840/50		496 (500-1)
CIRCLING	900-1	546 (600-1)	920-1 1/2	1120-2 1/2	1180-3
			566 (600-1 1/2)	766 (800-2 1/2)	826 (900-3)

HIRL Rwy 5-23

MIRL Rwy 14-32

REIL Rws 23 and 32

SE-4, 16 APR 2026 to 14 MAY 2026

SE-4, 16 APR 2026 to 14 MAY 2026