

| | | |
|---|------------------------|---|
| LOC/DME I-MAC 111.9 Chan 56 | APP CRS 105° | Rwy Idg 4184 TDZE 430 Apt Elev 437 |
|---|------------------------|---|

LOC RWY 10

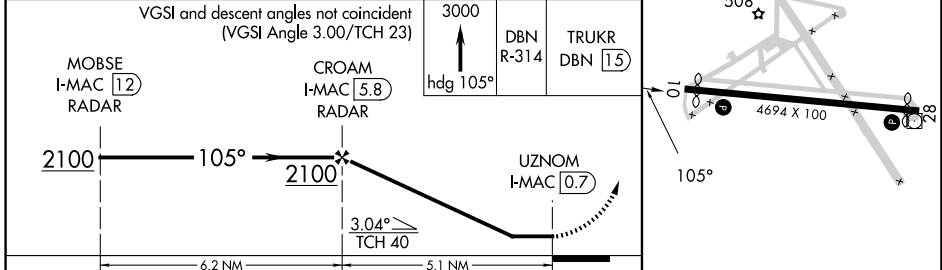
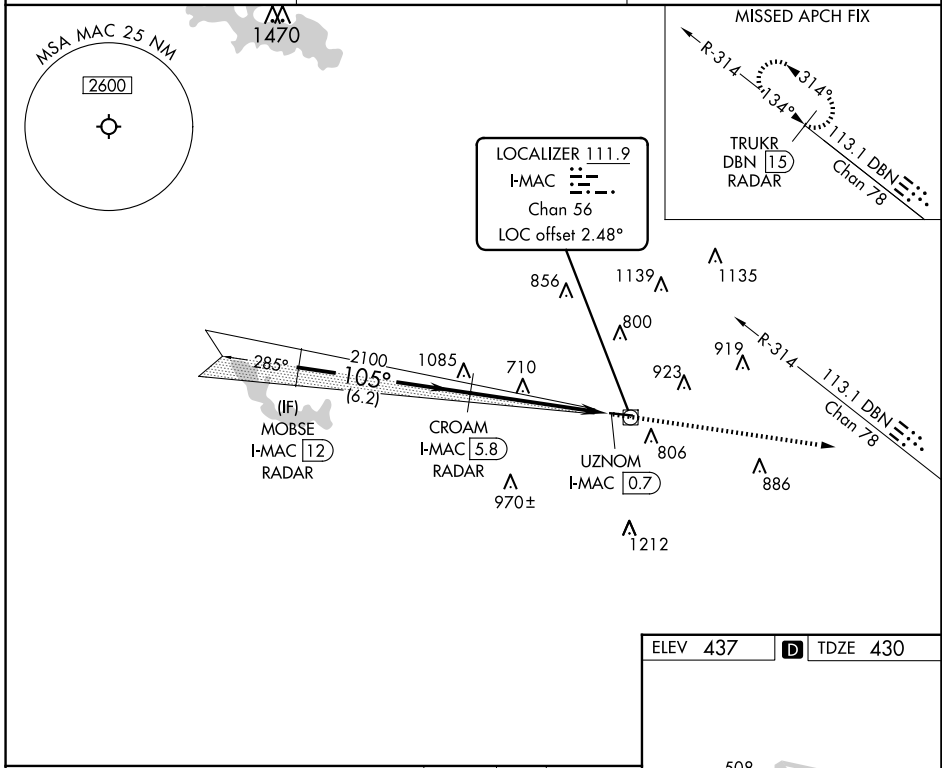
MACON DOWNTOWN (MAC)

RADAR required for procedure entry. DME or RADAR required.

NA Rwy 10 helicopter visibility reduction below 3/4 SM NA. Use Middle Georgia Rgnl altimeter setting; when not received, use Robins AFB altimeter setting and increase all MDA 20 feet and S-LOC 10 visibility Cat C/D 1/2 SM.

MISSED APPROACH: Climb to 3000 on heading 105° and DBN VORTAC R-314 to TRUKR/DBN VORTAC 15 DME/ RADAR and hold.

| | | |
|----------------------------|---|---------------------------------|
| MCN ASOS 120.775 | ATLANTA APP CON ★ 124.2 279.6 | UNICOM 123.0 (CTAF) 0 |
|----------------------------|---|---------------------------------|



| CATEGORY | A | B | C | D |
|-------------------|--------|-------------|-------------------------------|-------------------------|
| S-10 | 1060-1 | 630 (700-1) | 1060-1 3/4 | 630 (700-1 3/4) |
| C CIRCLING | 1200-1 | 763 (800-1) | 1320-2 3/4 883 (900-2 3/4) | 1480-3 1043 (1100-3) |

MIRL Rwy 10-28 0

SE-4, 16 APR 2026 to 14 MAY 2026

SE-4, 16 APR 2026 to 14 MAY 2026