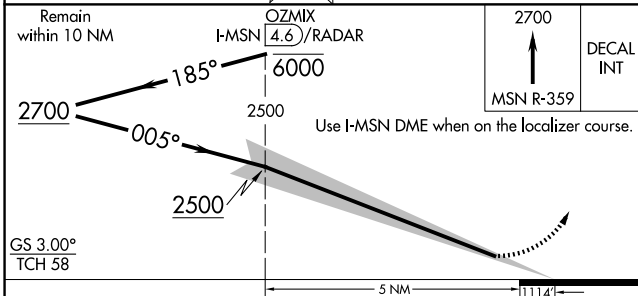
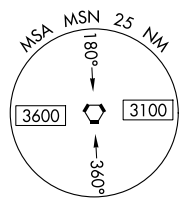
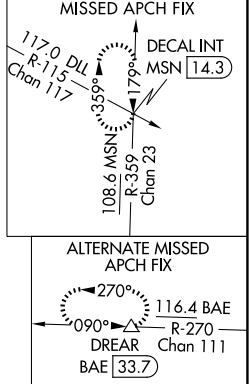
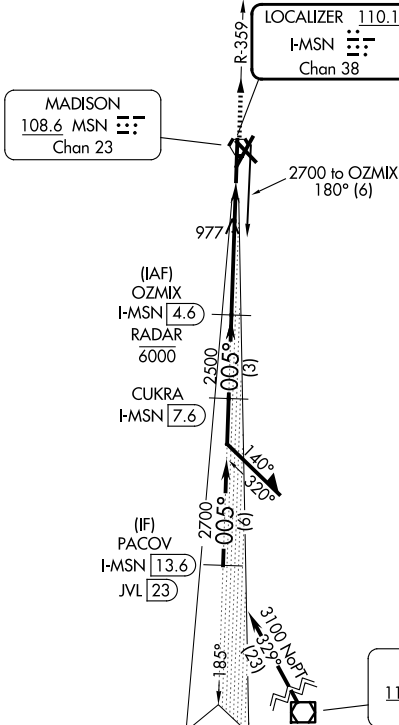


LOC/DME I-MSN <b>110.1</b> Chan <b>38</b>	APP CRS <b>005°</b>	Rwy Ldg TDZE Apt Elev	<b>8005</b> <b>862</b> <b>887</b>
---	------------------------	-----------------------------	---

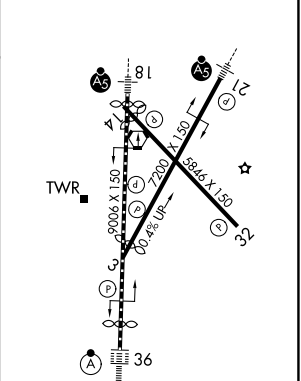
# ILS RWY 36 (CAT II & III)

DANE COUNTY RGNL/TRUAX FLD (MSN)

DME or RADAR required.		ALSF-2	MISSED APPROACH: Climb to 2700 on MSN VORTAC R-359 to DECAL INT/MSN 14.3 DME and hold.	
<p>Procedure NA when tower closed. CAT II: RVR 1000 authorized with specific OPSPEC, MSPEC, or LOA approval and use of autoland or HUD to touchdown.</p>				
ATIS <b>124.65 278.3</b>	MADISON APP CON★ <b>135.45 343.7</b>	MADISON TOWER★ <b>119.3 (CTAF) 257.8</b>	GND CON <b>121.9 348.6</b>	UNICOM <b>122.95</b>



ELEV 887	D	TDZE 862
----------	---	----------



CATEGORY	A	B	C	D
S-ILS 36	CAT II RA 109/12 100 DA 962			
S-ILS 36	CAT III RVR 06			
<b>CATEGORY II &amp; III ILS - SPECIAL AIRCREW &amp; AIRCRAFT CERTIFICATION REQUIRED</b>				

HIRL all Rwys  
REIL Rwys 3, 14 and 32

EC-3, 16 APR 2026 to 14 MAY 2026

EC-3, 16 APR 2026 to 14 MAY 2026