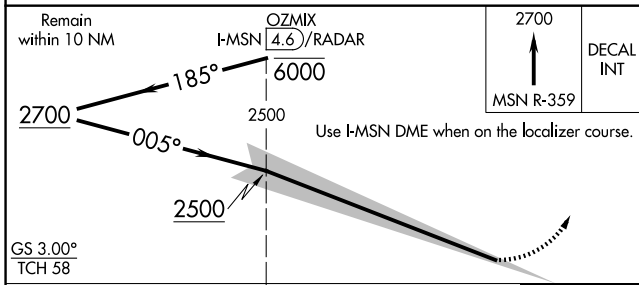
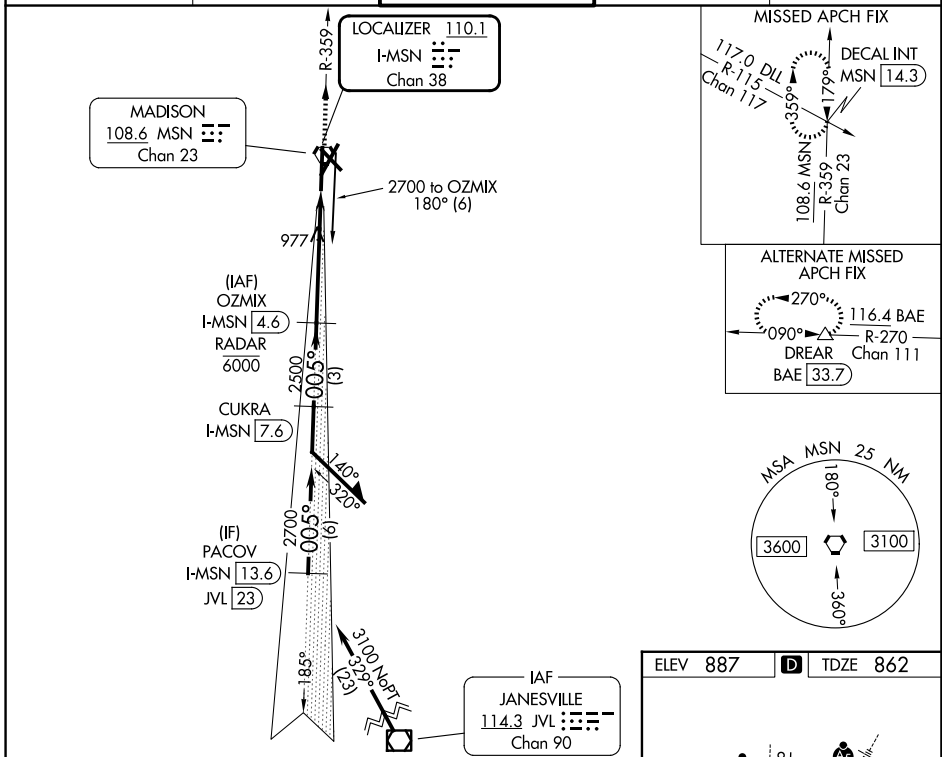


LOC/DME I-MSN 110.1 Chan 38	APP CRS 005°	Rwy Ldg TDZE 862 Apt Elev 887
---	------------------------	---

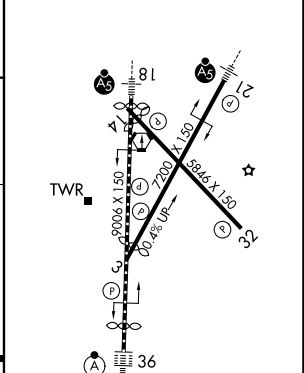
ILS RWY 36 (SA CAT I)

DANE COUNTY RGNL/TRUAX FLD (MSN)

DME or RADAR required.		ALSF-2	MISSED APPROACH: Climb to 2700 on MSN VORTAC R-359 to DECAL INT/MSN 14.3 DME and hold.	
<p>Requires specific OPSPEC, MSPEC, or LOA approval and use of HUD to DH. Procedure NA when tower closed.</p>				
ATIS 124.65 278.3	MADISON APP CON* 135.45 343.7	MADISON TOWER* 119.3 (CTAF) 257.8	GND CON 121.9 348.6	UNICOM 122.95



ELEV 887	D	TDZE 862
----------	----------	----------



CATEGORY	A	B	C	D
S-ILS 36	RA 159/14		150 DA 1012	
SA CATEGORY I ILS - SPECIAL AIRCREW & AIRCRAFT CERTIFICATION REQUIRED				

HIRL all Rwy's
REIL Rwy's 3, 14 and 32

EC-3, 16 APR 2026 to 14 MAY 2026

EC-3, 16 APR 2026 to 14 MAY 2026