

LOC/DME I-DQJ 111.55 Chan 52 (Y)	APP CRS 214°	Rwy Ldg TDZE 887 Apt Elev 887
---	------------------------	---

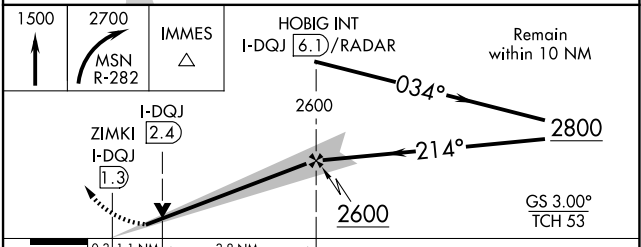
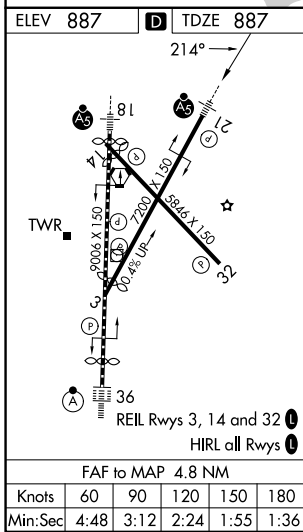
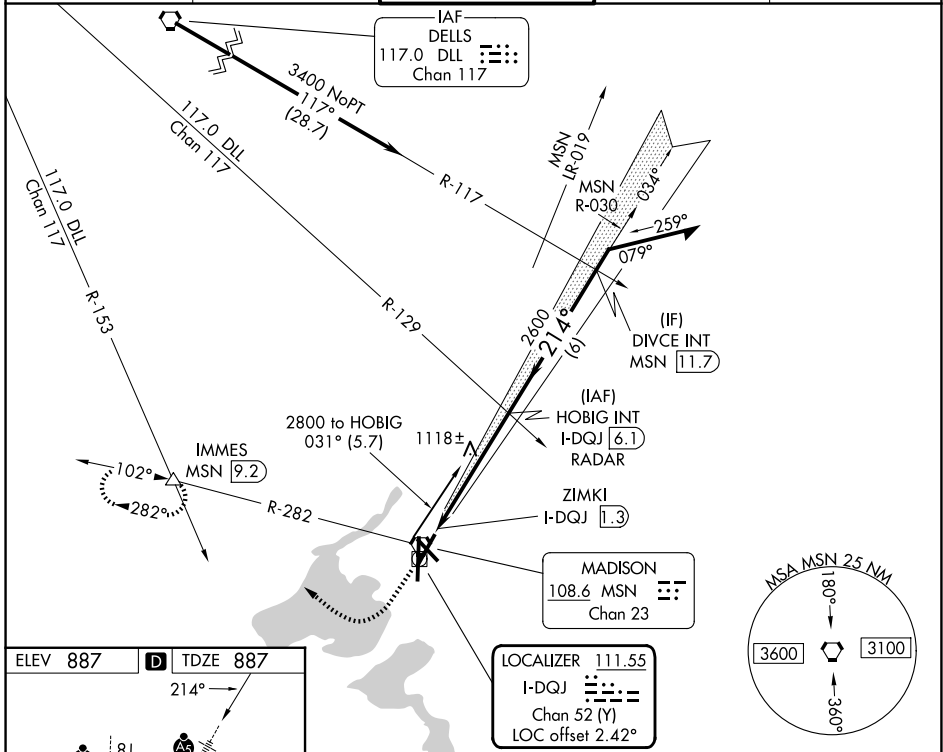
ILS or LOC RWY 21
DANE COUNTY RGNL/TRUAX FLD (MSN)

⚠ For inop ALS, increase S-LOC 21 Cat C/D visibility to 1½ mile.

MALSR
45

MISSED APPROACH: Climb to 1500 then climbing right turn to 2700 on MSN VORTAC R-282 to IMMES INT/MSN VORTAC 9.2 DME and hold.

ATIS 124.65 278.3	MADISON APP CON* 135.45 343.7	MADISON TOWER* 119.3 (CTAF) 0 257.8	GND CON 121.9 348.6	UNICOM 122.95
-----------------------------	---	---	-------------------------------	-------------------------



CATEGORY	A	B	C	D
S-ILS 21	1137-½ 250 (300-½)			
S-LOC 21	1380-½	493 (500-½)	1380-1	493 (500-1)
CIRCLING	1420-1 533 (600-1)	1460-1 573 (600-1)	1460-1½ 573 (600-1½)	1700-2¾ 813 (900-2¾)

EC-3, 16 APR 2026 to 14 MAY 2026

EC-3, 16 APR 2026 to 14 MAY 2026