

WAAS CH 42522 W18A	APP CRS 185°	Rwy Ldg 8606 TDZE 864 Apt Elev 887
--	------------------------	---

RNAV (GPS) RWY 18

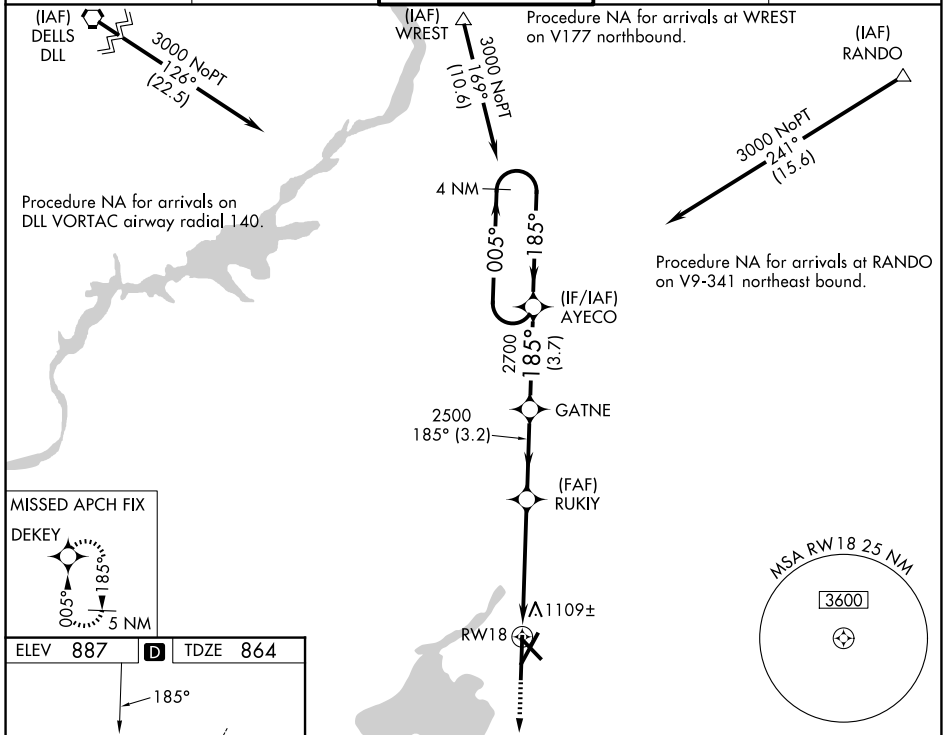
DANE COUNTY RGNL/TRUAX FLD (MSN)

⚠ For uncompensated Baro-VNAV systems, LNAV/VNAV NA below -19°C (-2°F) or above 54°C (130°F), DME/DME RNP-0.3 NA. For inop MALSR, increase LNAV/VNAV all Cats visibility to 1 1/8 mile and LNAV Cat C/D visibility to 1 1/2 miles.
**** RVR 1800 authorized with use of FD or AP or HUD to DA.**

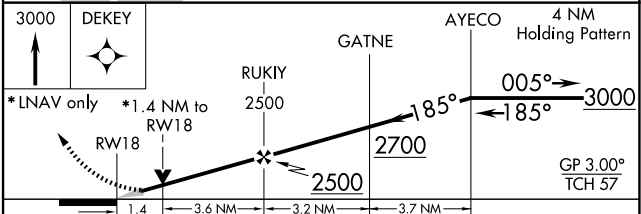
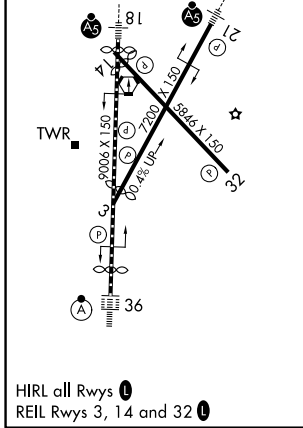


MISSED APPROACH:
Climb to 3000 direct DEKEY and hold.

ATIS 124.65 278.3	MADISON APP CON* 135.45 343.7	MADISON TOWER* 119.3 (CTAF) 0 257.8	GND CON 121.9 348.6	UNICOM 122.95
-----------------------------	---	---	-------------------------------	-------------------------



ELEV 887	D	TDZE 864
-----------------	----------	-----------------



CATEGORY	A	B	C	D
LPV DA**	1064/24 200 (200-1/2)			
LNAV/VNAV DA	1360-1 1/4 496 (500-1 1/4)			
LNAV MDA	1360/24	496 (500-1/2)	1360/55	496 (500-1)
CIRCLING	1420-1 533 (600-1)	1460-1 573 (600-1)	1460-1 1/2 573 (600-1 1/2)	1700-2 3/4 813 (900-2 3/4)

EC-3, 16 APR 2026 to 14 MAY 2026

EC-3, 16 APR 2026 to 14 MAY 2026