

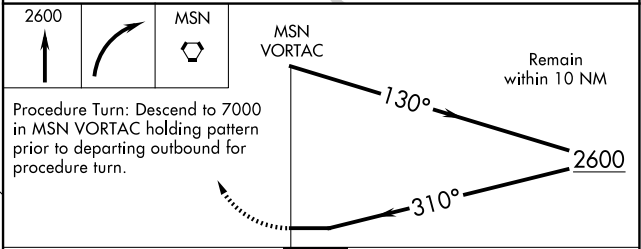
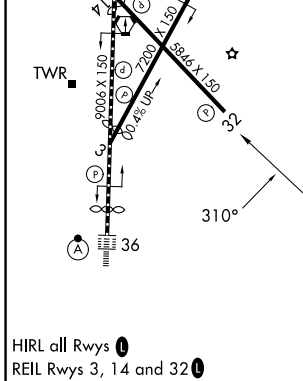
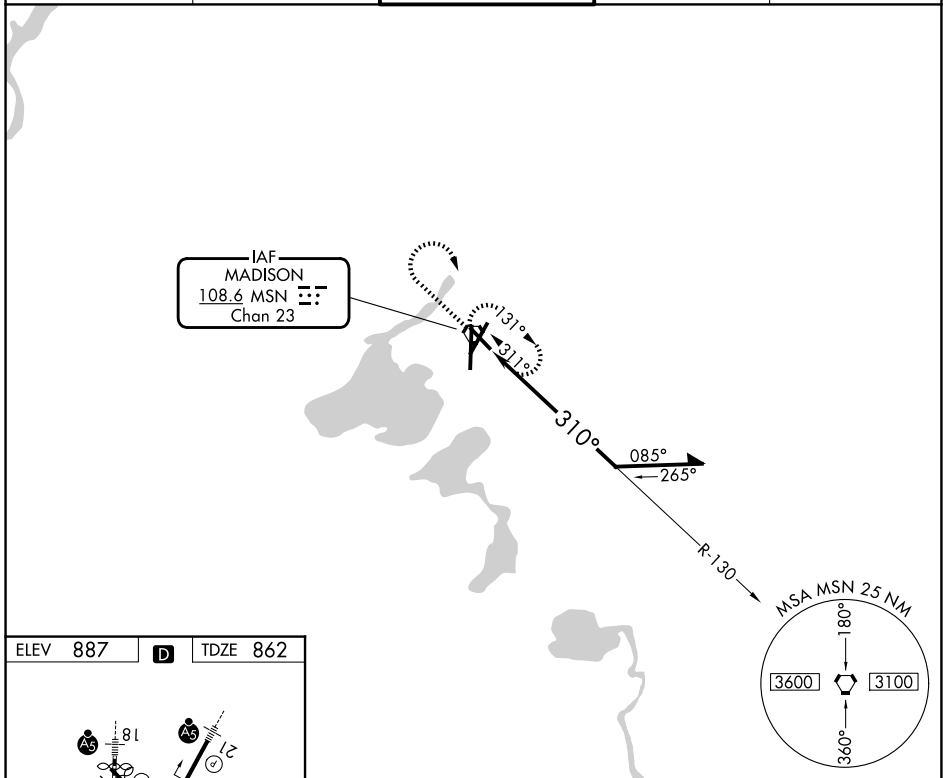
VORTAC MSN <b>108.6</b> Chan <b>23</b>	APP CRS <b>310°</b>	Rwy Ldg <b>5846</b> TDZE <b>862</b> Apt Elev <b>887</b>
--	------------------------	---

**VOR RWY 32**  
DANE COUNTY RGNL/TRUAX FLD (MSN)

**⚠** When VGS1 inop, Straight-In and Circling Rwy 32 procedures NA at night. Visibility reduction by helicopters NA.

MISSED APPROACH: Climb to 2600 then right turn direct MSN VORTAC and hold.

ATIS <b>124.65 278.3</b>	MADISON APP CON★ <b>135.45 343.7</b>	MADISON TOWER★ <b>119.3 (CTAF) 0 257.8</b>	GND CON <b>121.9 348.6</b>	UNICOM <b>122.95</b>
-----------------------------	---	---	-------------------------------	-------------------------



CATEGORY	A	B	C	D
S-32	1560-1	698 (700-1)	1560-2	698 (700-2)
CIRCLING	1560-1	673 (700-1)	1560-2 673 (700-2)	1700-2¾ 813 (900-2¾)

EC-3, 16 APR 2026 to 14 MAY 2026

EC-3, 16 APR 2026 to 14 MAY 2026