

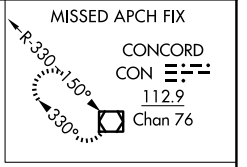
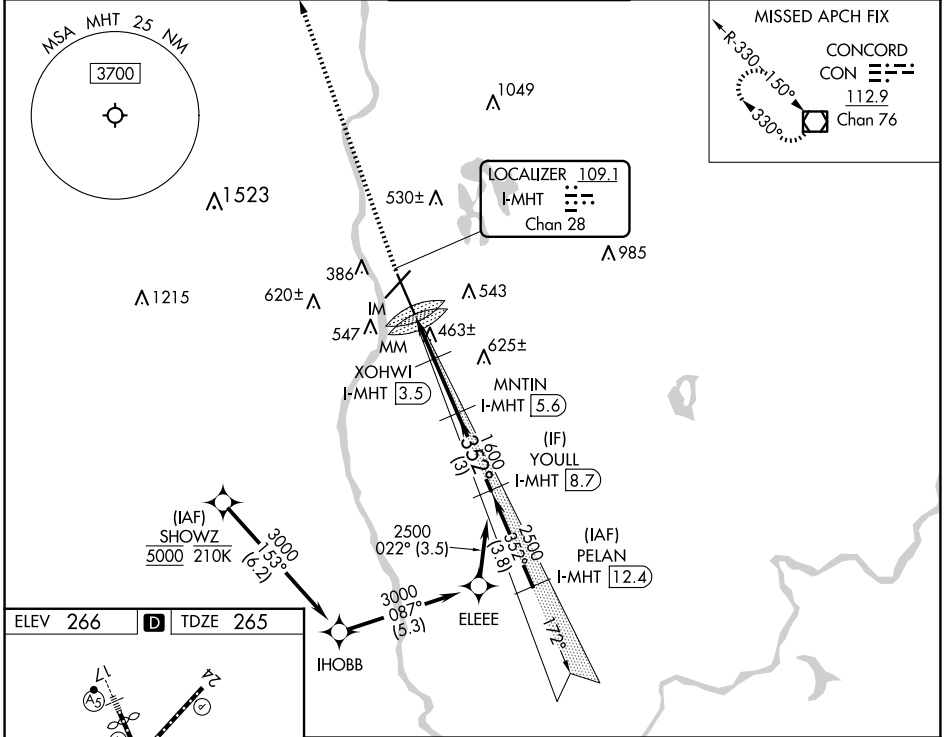
LOC/DME I-MHT 109.1 Chan 28	APP CRS 352°	Rwy Ldg TDZE Apt Elev	7650 265 266
--	------------------------	-----------------------------	---

ILS or LOC RWY 35

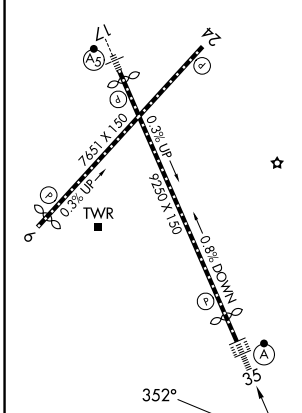
MANCHESTER BOSTON RGNL (MHT)

From SHOWZ: RNAV 1-DME/DME/IRU or GPS required. DME or RADAR required.	ALSF-2	MISSED APPROACH: Climb to 4000 direct CON VOR/DME and hold.
▼ Rwy 35 helicopter visibility reduction below RVR 4000 NA. ▲ For inop ALS, increase S-LOC 35 Cats A/B visibility to RVR 5500.		

ATIS 119.55	BOSTON APP CON 124.9 269.075	MANCHESTER TOWER 121.3 239.025	GND CON 121.9	CLNC DEL 135.9
-----------------------	--	--	-------------------------	--------------------------

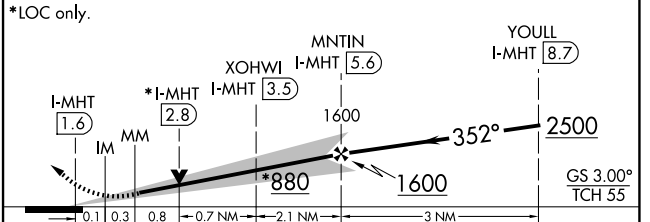


ELEV 266	D	TDZE 265
----------	----------	----------



REIL Rws 6 and 24
TDZ/CL Rwy 17 and 35
HIRL Rws 6-24 and 17-35

4000 CON VGSI and ILS glidepath not coincident (VGSI Angle 3.00/TCH 68).
Use I-MHT DME when on the localizer course.



CATEGORY	A	B	C	D
S-ILS 35	465/18 200 (200-½)			
S-LOC 35	720/40	455 (500-¾)	720/45	455 (500-¾)

NE-1, 16 APR 2026 to 14 MAY 2026

NE-1, 16 APR 2026 to 14 MAY 2026